



Neon

Glow Lines Effects



CONTENTS

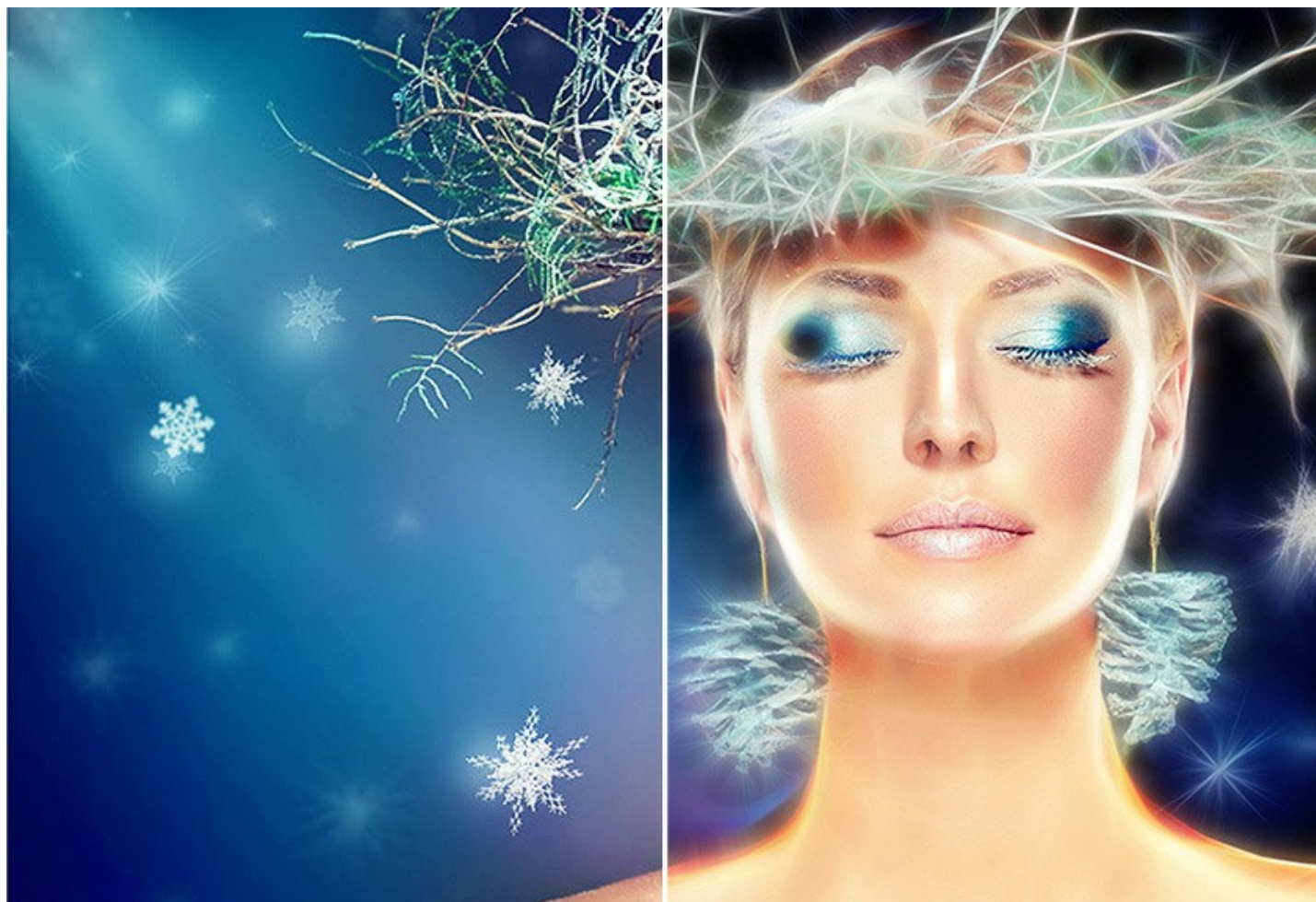
- Field of Application
- Installation on Windows
- Installation on Mac
- Installation on Linux
- Activation
- How It Works
 - ◊ Workspace
 - ◊ Using the Program
 - ◊ Effect Parameters
 - ◊ Tools
 - ◊ Canvas
 - ◊ Frame
 - ◊ Text
 - ◊ Presets
 - ◊ Preferences
 - ◊ Batch Processing
 - ◊ Print Image
- Examples
 - ◊ Christmas & New Year Card
 - ◊ Illusion: Psychedelic Portrait
 - ◊ Magical Deer
- AKVIS Programs

AKVIS NEON 6.1 | GLOWING DRAWINGS FROM PHOTOS

AKVIS Neon lets you create amazing glowing lines effects. The software transforms a photo into a neon image that looks like drawn with luminescent ink.

The program does not require any special skills, it is easy to learn and apply. It provides a collection of ready-to-use presets which help you quickly create a huge variety of incredible effects.

With **AKVIS Neon** you can transform an ordinary photo into a gorgeous drawing!

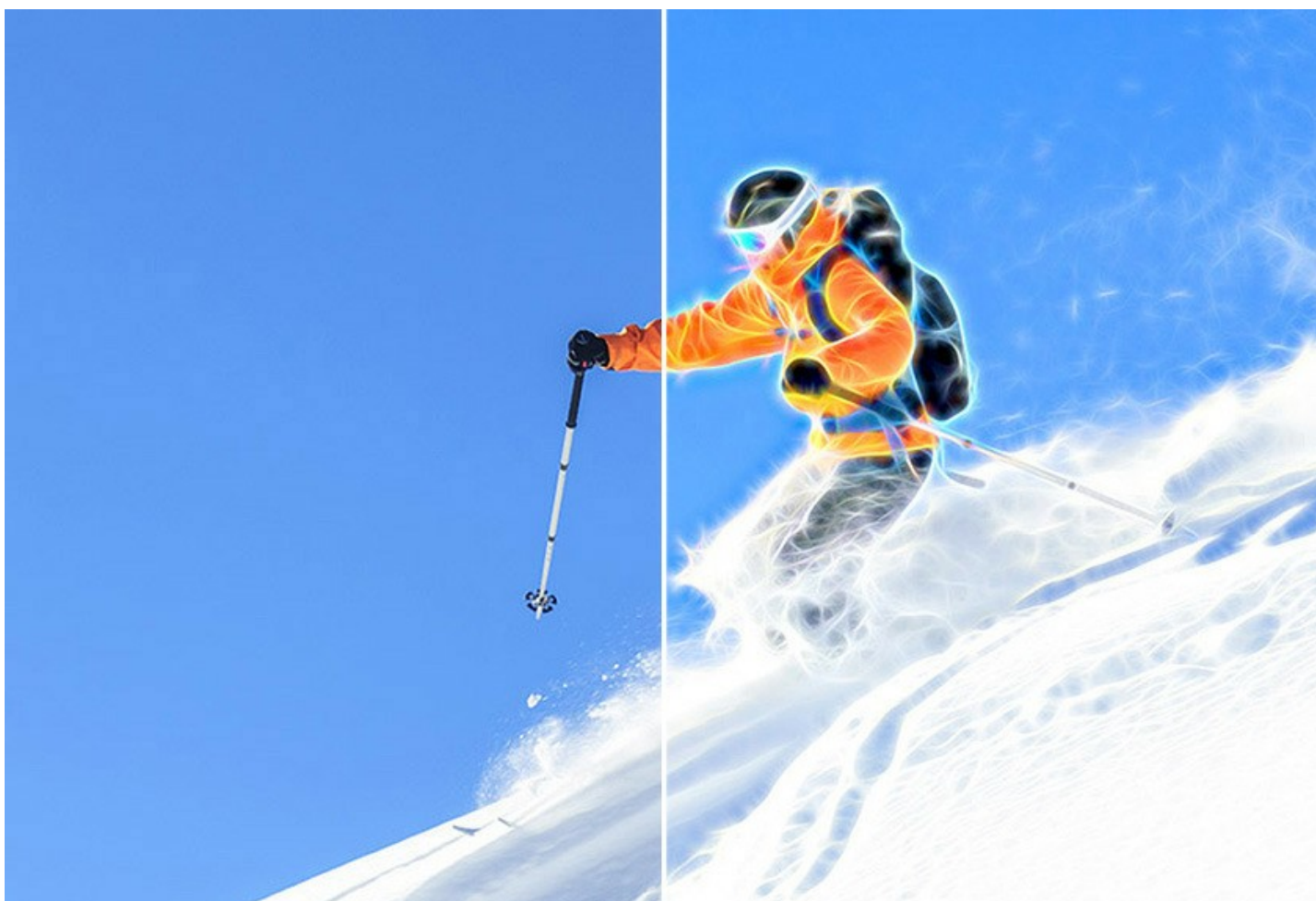


The magical glow effect makes your holiday images even more exciting and joyful! The program will help you to prepare sparkling Christmas and New Year greeting cards, unique birth announcements and wedding invitations.

AKVIS Neon lets you create a glowing image, a dramatic landscape or an extraordinary portrait, or just slightly outline edges making a picture more interesting and expressive.



The program is useful for designing posters and flyers. A luminous image will draw attention and increase the attractiveness of a product. You can make beautiful luminous backgrounds, abstract paintings, spectacular illustrations for a photo book.



By experimenting with the settings, you will get various effects: from blurry and hazy glow to clear and sharp contour lines.

The software has a standard AKVIS interface and a set of characteristic features available in many other AKVIS programs: adding text, applying canvas texture, cropping images, publishing a picture in the social networks, batch processing, and additional tools for refining the effect.

AKVIS Neon is available as a *standalone* program and as a *plugin* to a photo editor. The plug-in is compatible with [AliveColors](#), Adobe Photoshop, Photoshop Elements, Corel PaintShop Pro, etc. [Consult the compatibility page](#) for more details.

The [functionality](#) of the program depends on the license type. During the trial period you can try all options and choose the license you like.

INSTALLATION ON WINDOWS

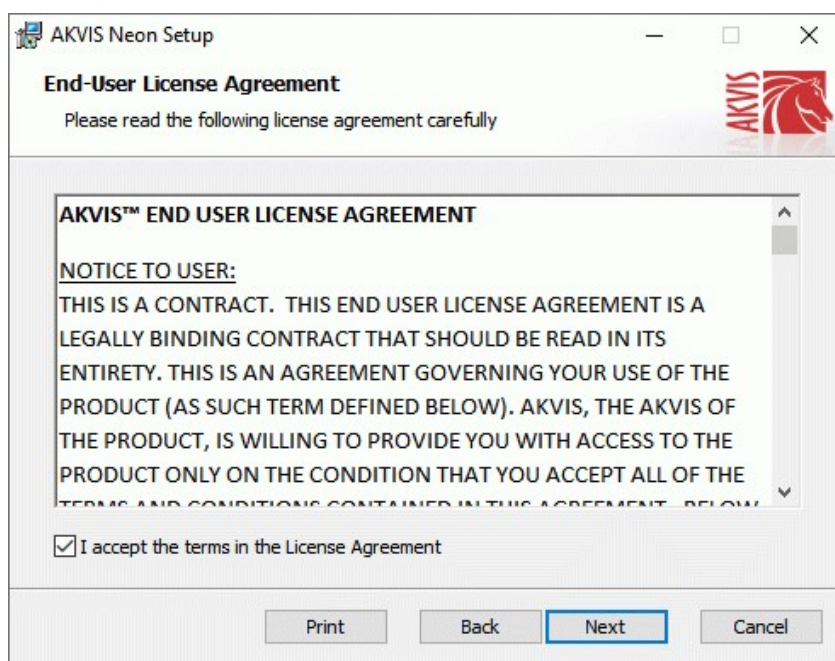
Please find instructions below on how to install the AKVIS programs on Windows.

You must have administrator rights to install the program on your computer.

Before installing the AKVIS plugins, please make sure that the image editor where you want to install the plugins, is closed. Or re-run the image editor after the installation of the plugin.

1. Run the setup **exe** file.
2. Select your language and press the **Install** button.
3. To continue the installation process you have to read and accept the **End User License Agreement**.

Activate the check box **"I accept the terms in the License Agreement"**, and press **Next**.

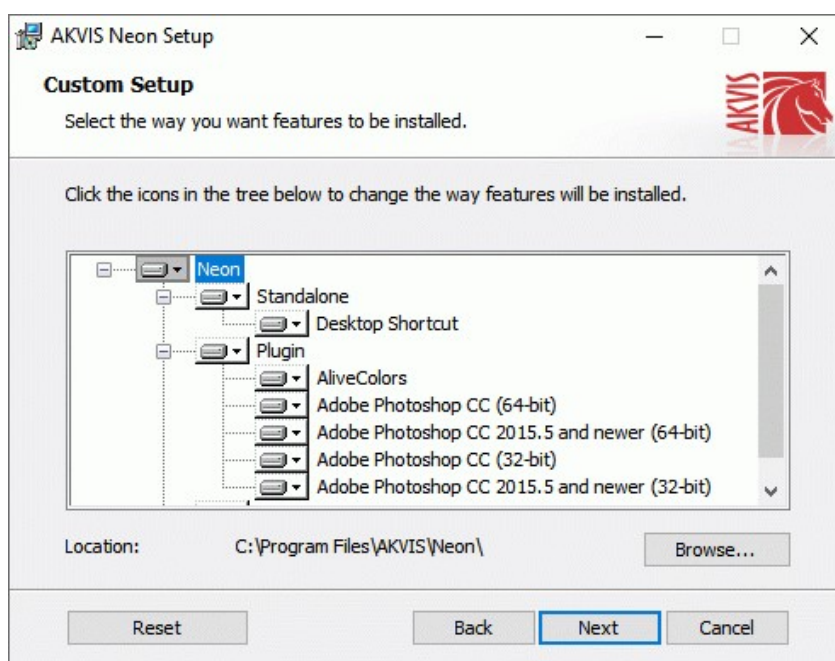


4. To install the **Plugin**, select your photo editor(s) from the list.

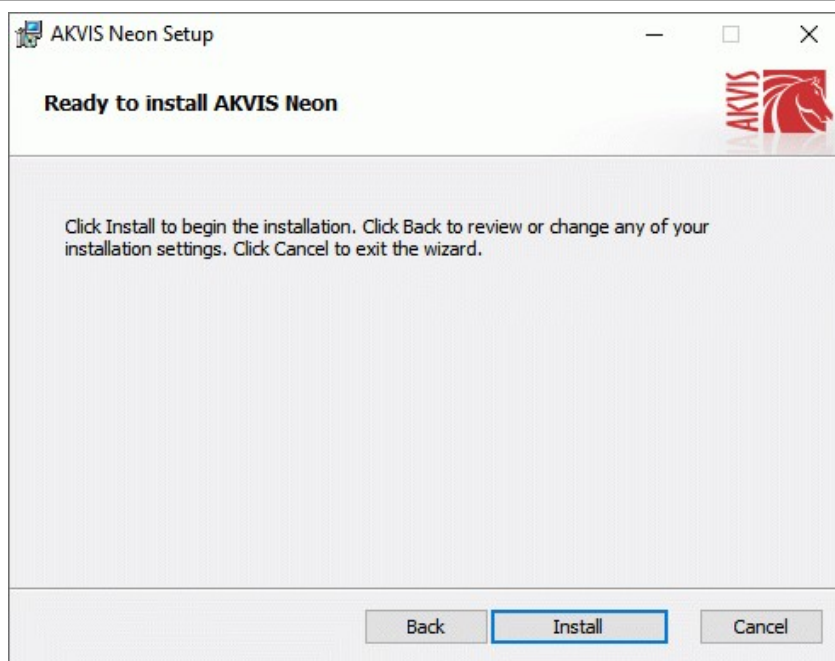
To install the **Standalone** version, make sure that the corresponding option is activated.

To create a shortcut for the program on desktop, activate **Desktop Shortcut**.

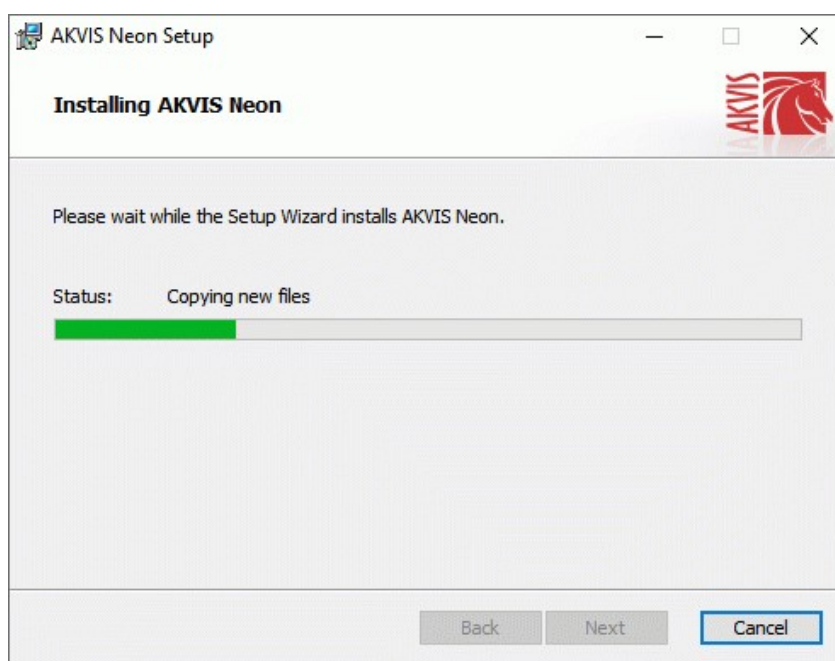
Press **Next**.



5. Press the **Install** button.

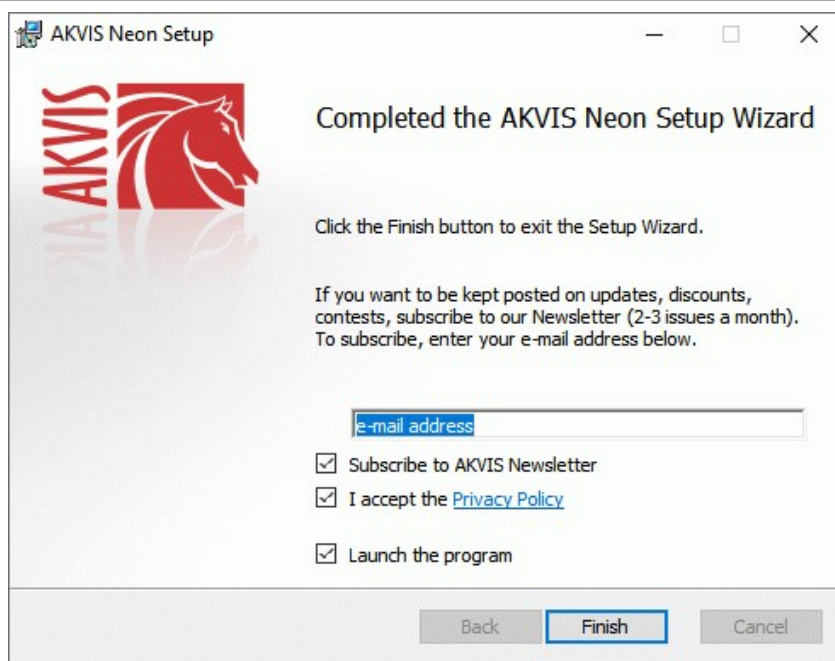


6. The installation is in progress.



7. The installation is completed.

You can subscribe to the **AKVIS Newsletter** to be informed about updates, events, and special offers. Enter your e-mail address and confirm that you accept the Privacy Policy.



8. Press **Finish**.

After installation of the **standalone** version, you will see the program name in the **Start** menu and a shortcut on the desktop, if during installation the corresponding option was enabled.

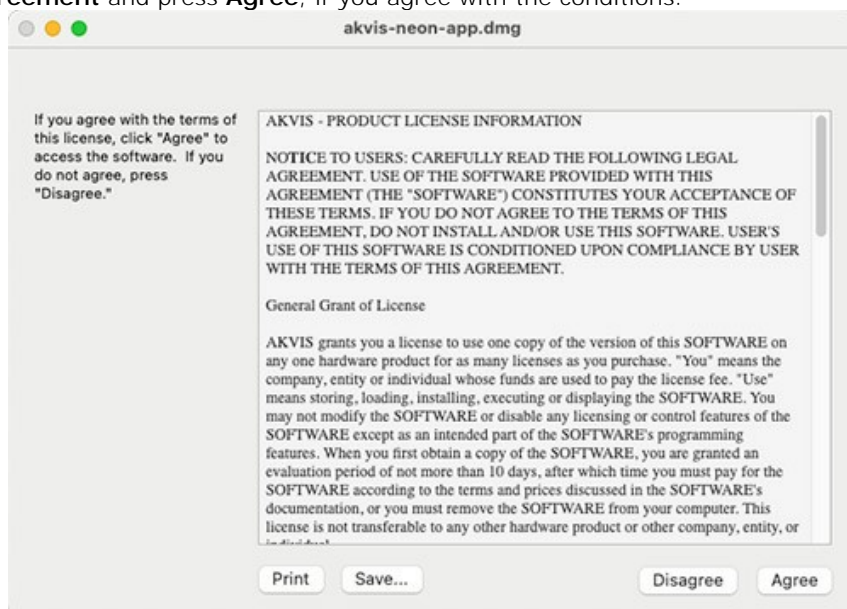
After installation of the **plugin**, you will see a new item in the **Filter/Effects** menu of your photo editor. For example in **Photoshop**: **Filter -> AKVIS -> Neon**, in **AliveColors**: **Effects -> AKVIS -> Neon**.

INSTALLATION ON MAC

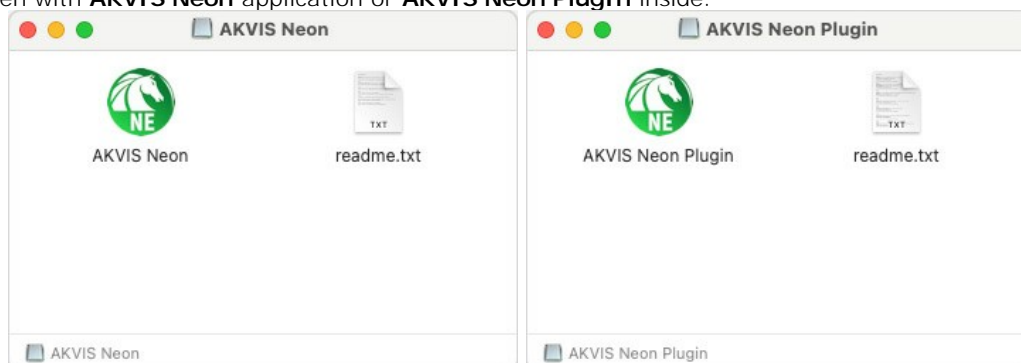
Follow the instructions to install the AKVIS software on a Mac computer.

You must have administrator rights to install the program on your computer.

1. Open the **dmg** file:
 - **akvis-neon-app.dmg** to install the **Standalone** version
 - **akvis-neon-plugin.dmg** to install the **Plugin** into your image editor.
2. Read the **License Agreement** and press **Agree**, if you agree with the conditions.



3. **Finder** will open with **AKVIS Neon** application or **AKVIS Neon PlugIn** inside.



4. To install the **Standalone** version, drag the **AKVIS Neon** app into the folder **Applications** (or any other place you like).

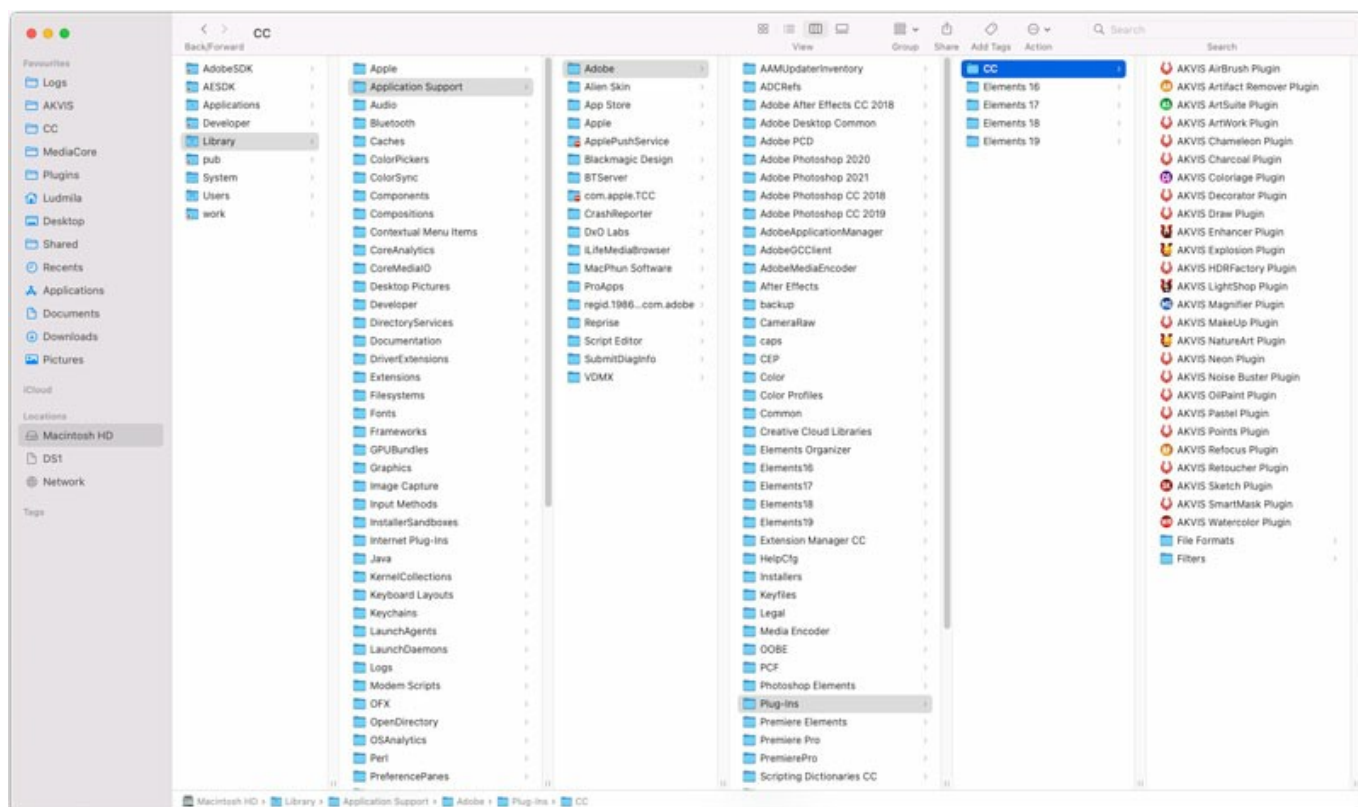
To install the **Plugin**, drag the entire **AKVIS Neon PlugIn** folder into the **Plug-Ins** folder of your graphic editor:

AliveColors: You can choose in the **Preferences** the folder of the plugins.

Photoshop CC 2023, CC 2022, CC 2021, CC 2020, CC 2019, CC 2018, CC 2017, CC 2015.5:
Library/Application Support/Adobe/Plug-Ins/CC;

Photoshop CC 2015: Applications/Adobe Photoshop CC 2015/Plug-ins;

Photoshop CS6: Applications/Adobe Photoshop CS6/Plug-ins.



AKVIS Plugins on Mac
(click to enlarge)

After installation of the **plugin**, you will see a new item in the filters/effects menu of your photo editor. Select in **Photoshop**: **Filter -> AKVIS -> Neon**, in **AliveColors**: **Effects -> AKVIS -> Neon**.

Run the **standalone** application by double-clicking on its icon in **Finder**.

You can also run the AKVIS programs from the **Photos** app by choosing the **Image -> Edit With** command (in High Sierra and later versions of macOS).

INSTALLATION ON LINUX

Follow the instructions to install the AKVIS software on a Linux computer.

Note: The AKVIS programs are compatible with **Linux kernel 5.0+ 64-bit**. You can find out the kernel version using the **uname -srm** command.

Installation on **Debian**-based systems:

Note: You need apt-install or apt-get permissions required to install software.

1. Run the terminal.
2. Create a directory to store keys:
sudo mkdir -p /usr/share/keyrings
3. Download the key that signed the repository:
curl -fsSL https://akvis.com/akvis.gpg | sudo tee /usr/share/keyrings/akvis.gpg >/dev/null
or **wget -O - https://akvis.com/akvis.gpg | sudo tee /usr/share/keyrings/akvis.gpg >/dev/null**
4. Add the repository to the list where the system looks for packages to install:
echo 'deb [arch=i386 signed-by=/usr/share/keyrings/akvis.gpg] https://akvis-deb.sfo2.cdn.digitaloceanspaces.com akvis non-free' | sudo tee /etc/apt/sources.list.d/akvis.list
5. Update the list of known packages:
sudo apt-get update
6. Install AKVIS Neon
sudo apt-get install akvis-neon
7. The installation is completed.

Launch the program via the terminal or using the program shortcut.

8. For automatic updates, use the command:
sudo apt-get upgrade

To remove the program:

sudo apt-get remove akvis-neon --autoremove

Installation on **RPM**-based systems (**CentOS**, **RHEL**, **Fedora**):

1. Run the terminal.
2. Register the key that signed the repository:
sudo rpm --import https://akvis.com/akvis.asc
3. Add the repository to the system:
sudo wget -O /etc/yum.repos.d/akvis.repo https://akvis.com/akvis.repo
4. Update the package list:

when using the **dnf** package manager:
sudo dnf update

when using the **yum** package manager:
sudo yum update

5. Install AKVIS Neon:

when using the **dnf** package manager:
sudo dnf install akvis-neon

when using the **yum** package manager:
sudo yum install akvis-neon

6. The installation is completed.

Launch the program via the terminal or using the program shortcut.

7. For automatic updates:

when using the **dnf** package manager:
sudo dnf upgrade

when using the **yum** package manager:
sudo yum upgrade

8. To remove the program:

when using the **dnf** package manager:
sudo dnf remove akvis-neon

when using the **yum** package manager:
sudo yum remove akvis-neon

Installation on **openSUSE**.

1. Run the terminal.
2. Login as a root user.
3. Add the key that signed the repository:
rpm --import http://akvis.com/akvis.asc
4. Add the repository to the system:
zypper ar -r https://akvis.com/akvis.repo akvis
5. Update the package list:
zypper ref
6. Install AKVIS Neon:
zypper install akvis-neon
7. The installation is completed.

Launch the program via the terminal or using the program shortcut.

8. For automatic updates:
zypper update

To remove the program:

zypper remove akvis-neon

In order to display the program interface correctly, it is recommended to install the Compton or Picom composite manager.


AKVIS SOFTWARE ACTIVATION

Attention! During the activation process your computer must be connected to Internet.

If it is not possible, we offer you an alternative way ([see below for Offline Activation](#)).

Download [AKVIS Neon](#) and install the program. [Read the Installation Instruction here](#).

When you run the unregistered version, a splash window will appear displaying general information about the version and the number of days left in your trial period.

You can also open the **About the Program** window by pressing the button  in the program's Control Panel.



Click on **TRY IT** to evaluate the software. A new window will appear with variants of licenses to test.

You do not need to register the trial version to try all features of the software. Just use the program during the evaluation time (10 days after the 1st start).

During the test period you can try all options and choose the license you like. Select one of the offered functionality types: **Home** (Plugin or Standalone), **Home Deluxe**, or **Business**. Your choice of license will affect which features will be available in the program. [Consult the comparison table](#) for more details about license types and versions of the software.

If the trial period has expired, the **TRY IT** button is disabled.

Click on **BUY NOW** to choose a license to order.

When the payment is effected, your serial number for the program will be sent to you within minutes.

Click on **ACTIVATE** to start the activation process.

Enter your name (the program will be registered to this name).

Enter your serial number (your license key).

Choose the method of activation — either direct connection to the activation server or by e-mail.

Direct connection:

We recommend activating the program using direct connection, as it is the easiest way.

At this step your computer must be connected to Internet.

Press **ACTIVATE**.

Your registration is completed!

Request by e-mail:

In case you have chosen activation by e-mail, a message with all necessary information will be created by the program.

NOTE: You can also use this method for **Offline Activation**:

If your computer is not connected to Internet, transfer the activation message to a computer connected to Internet, for example, with a USB stick. Send us this information to: activate@akvis.com.

Please do not send the screenshot! Just copy the text and save it.

We need your serial number for the software, your name, and HardwareID (HWID) of your computer.

We will generate your license file (**Neon.lic**) using this information and will send it to your e-mail address.

Save the **.lic** file (do not open it!) to your computer where you want to register the software, in the **AKVIS** folder in Users' Shared (Public) Documents:

♦ Windows:

C:\Users\Public\Documents\AKVIS

(This PC > Local Disk (C:) > Users > Public > Documents > AKVIS)

♦ Mac:

/Users/Shared/AKVIS

Open the **Finder**, select the **Go** menu, then select **Go to Folder...** (**⌘**+**Shift**+**G**), type **"/Users/Shared/AKVIS"**, and click **Go**.

♦ Linux:

/var/lib/AKVIS

Your registration is completed!



When the program is registered, **BUY NOW** turns to **UPGRADE** that lets you improve your license (for example, change **Home** to **Home Deluxe** or **Business**).

WORKSPACE

AKVIS Neon lets you transform a photograph into a neon drawing. The software can be used independently as a *standalone* program or in a photo editor as a *plugin* filter.

- *Standalone* is an independent program; you can open it by clicking on the program's icon.

To launch the standalone version, run the program directly:

On a Windows computer - select it from the **Start** menu or use the program's shortcut.

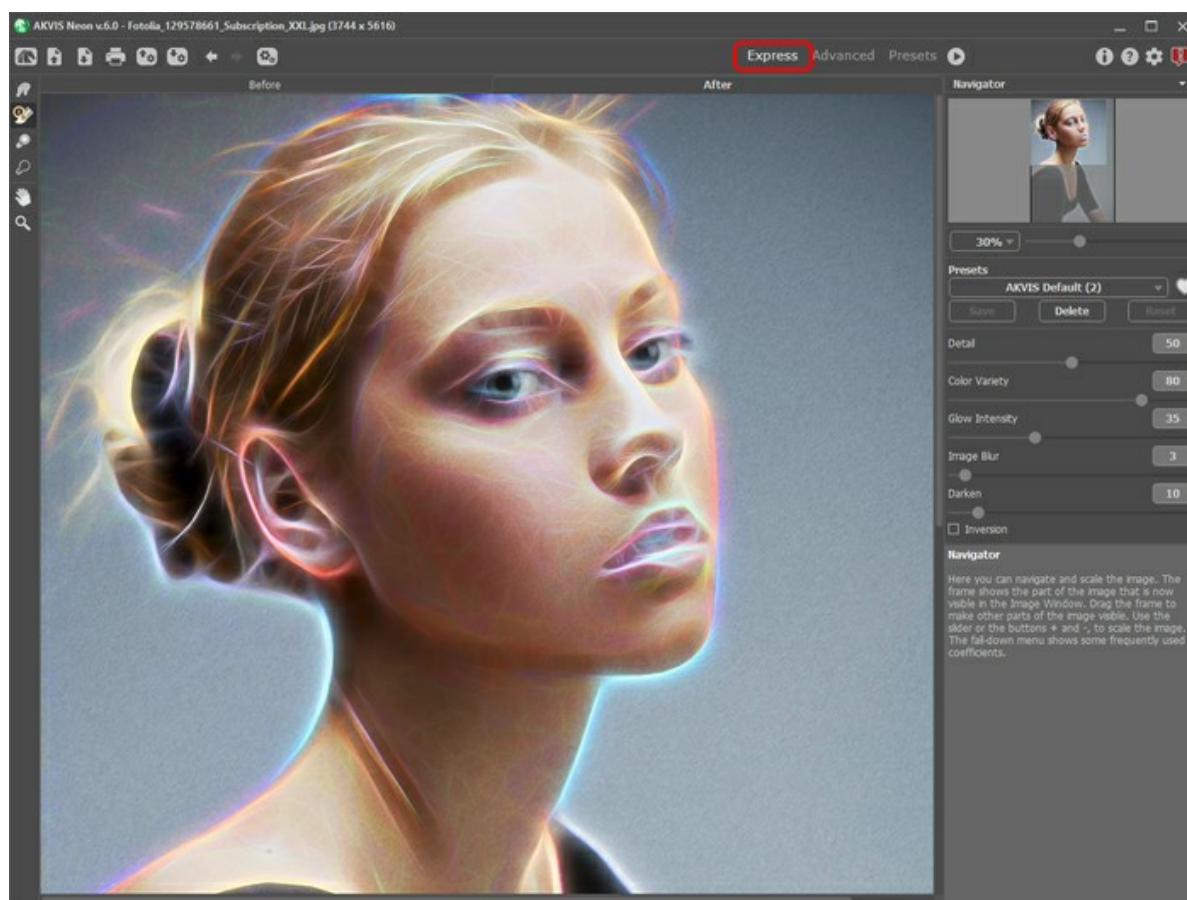
On a Mac computer - launch the app from the **Application** folder.

- *Plugin* is an add-on for a [photo editor](#), for example for Photoshop.

To call the plugin, [select it from filters](#) of your image editing program.

The workspace will be arranged according to the interface mode chosen in the Control Panel: **Express**, **Advanced**, or **Presets**.

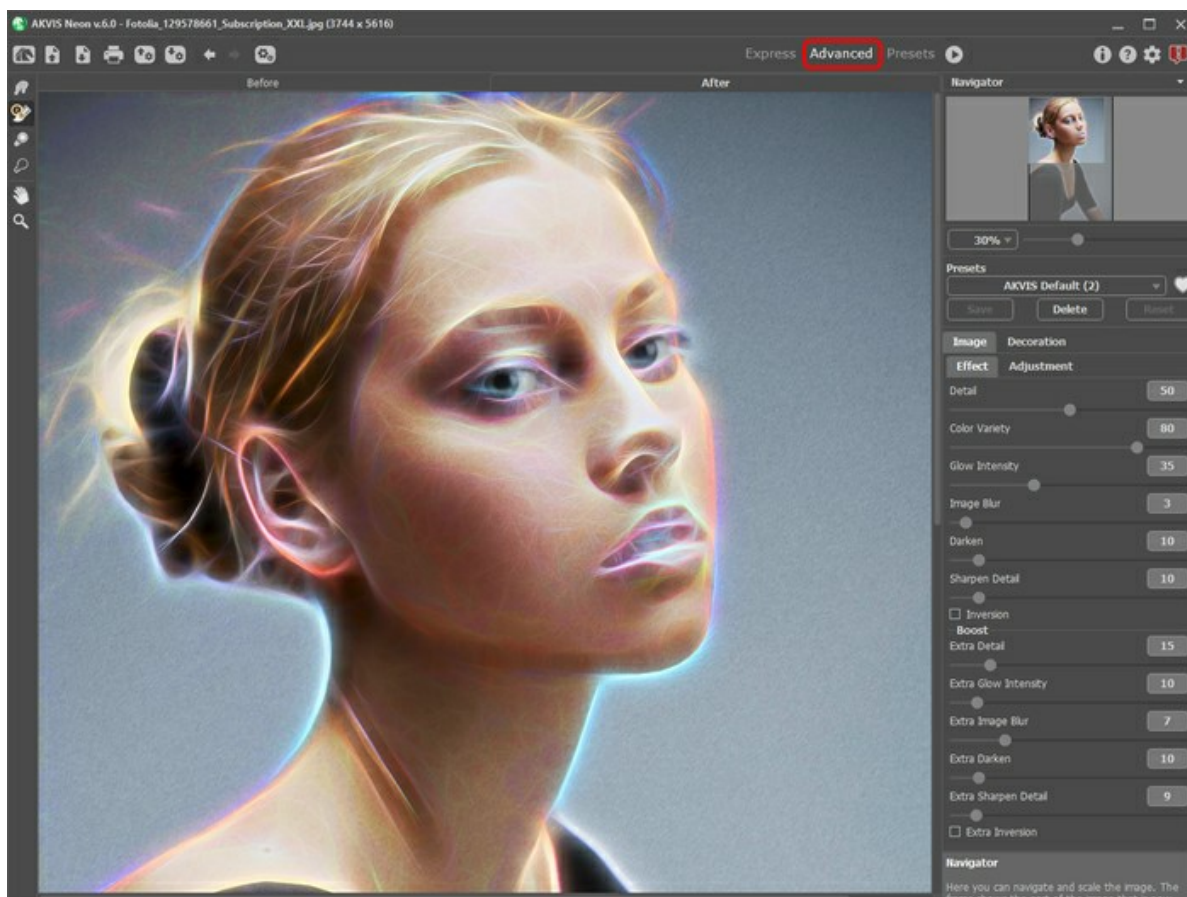
The first time you run the program, it is displayed in **Express** mode, with a simplified interface and a minimal set of sliders, which help to quickly obtain a satisfactory result.



Workspace of AKVIS Neon (Express)

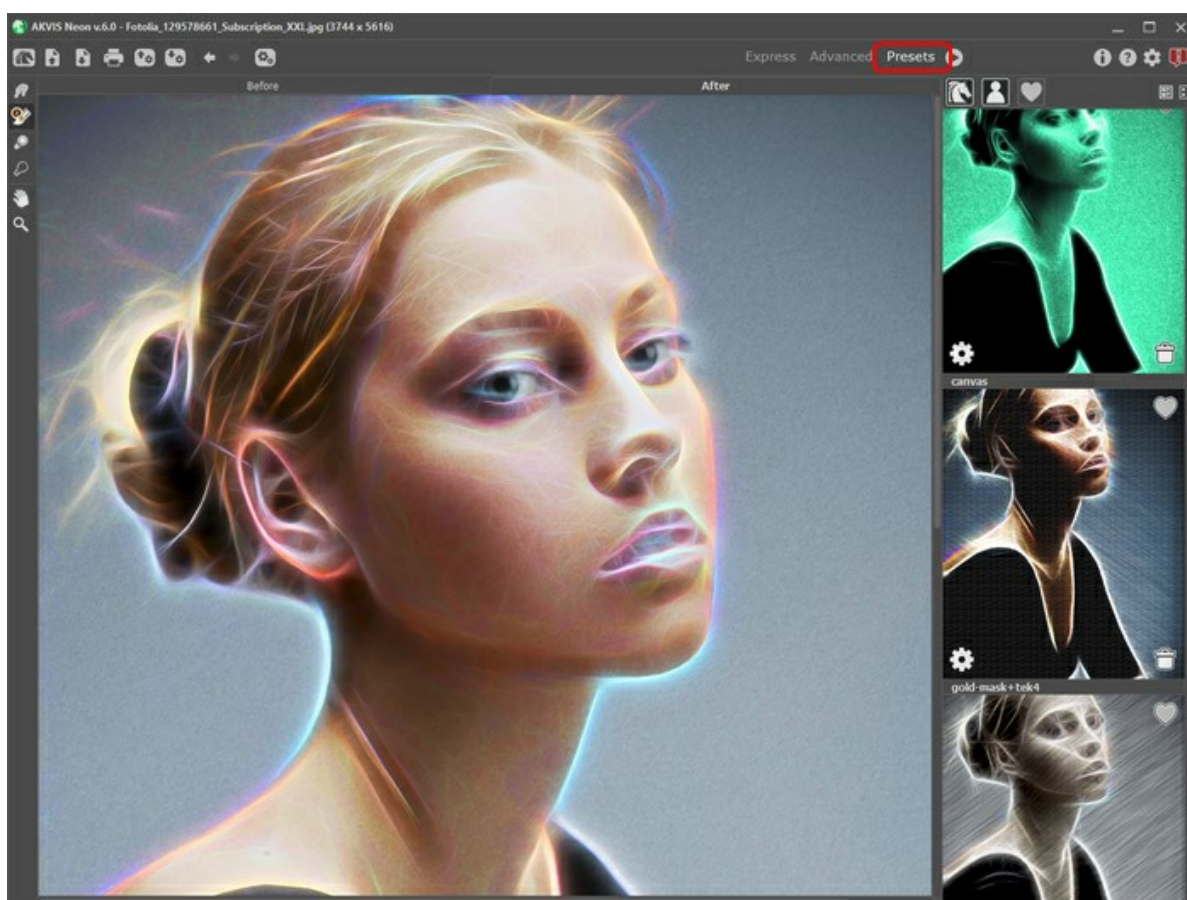
Experienced users who are familiar with the capabilities of **AKVIS Neon** can switch to **Advanced** mode: the interface's appearance will change, granting access to the full functionality of the program.

Note: All features and parameters work in **Express** mode as well; some are hidden and the program uses values of a chosen preset.



Workspace of AKVIS Neon (Advanced)

The **Presets** button in the top panel allows you to switch to the visual display mode of presets ([Presets Gallery](#)).





Workspace of AKVIS Neon (Presets Gallery)

The left part of the **AKVIS Neon** window is taken by the Image Window with two tabs: **Before** and **After**. In the **Before** tab you can see the original photo. The **After** tab shows the resulting image. You can switch between them by left-clicking on the tab with mouse button. To compare the original and the resulting images, click on the image and hold the button pressed


- the program will currently switch between the tabs.


In the upper part of the program's window you can see the **Control Panel** with these buttons:

The button  opens the home page of **AKVIS Neon**.


The button  (only in the standalone version) opens an image for processing. The hot-keys are **Ctrl+O** on Windows, **⌘+O** on Mac.


Right mouse click on this button displays the list of recent files. You can change the number of recent documents in the program's [preferences](#).


The button  (only in the standalone version) saves image to the disk. The hot-keys are **Ctrl+S** on Windows, **⌘+S** on Mac.


The button  (only in the standalone version) calls the **Print** dialog box. The hot-keys are **Ctrl+P** on Windows, **⌘+P** on Mac.


The button  imports a list of user presets (from the **.neon** file).

The button  exports user presets. You can save any presets to a **.neon** file.


The button  cancels the last operation (with the tools). It is possible to cancel several operations in a row. The hotkeys are **Ctrl+Z** on Windows, **⌘+Z** on Mac.

The button  returns the last cancelled operation. It is possible to return several operations in a row. The hotkeys are **Ctrl+Y** on Windows, **⌘+Y** on Mac.

The button  (only in the standalone version) opens the **Batch Processing** dialog to automatically process a series of images.

The button  initiates image processing with the current settings. The resulting image is shown in the **After** tab.

The button  (only in the plugin version) applies the result to the image and closes the plugin.

The button  shows information about the program: version, trial period, license.

The button  calls the **Help** files. The hot-key is **F1**.


The button  calls the **Preferences** dialog box for changing the program's options.

The button  opens a window showing the latest news about Neon.


On the left side there is the **Toolbar** with different tools appearing in the **Before/After** tabs.


Pre-Processing Tools (in the **Before** tab):

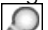
The button  switches on/off the [quick preview window](#).


The button  (only in the standalone version) activates the **Crop** tool which allows cutting off unwanted areas in the image.

Post-Processing Tools (for [Home Deluxe](#) and [Business](#) licenses in the **After** tab):


The button  activates the **Smudge** tool that lets you quickly add a handmade touch to your drawing. It mixes colors by displacing pixels, like a finger passing through wet paint.

The button  activates the **History Brush** tool which lets you fade the effect and restore the image, partially or fully, to its original state.


The button  activates the **Lighten** tool which allows you to increase the brightness in certain parts of your image.

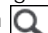
The button  activates the **Darken** tool which allows you to reduce the brightness.

Additional Tools:

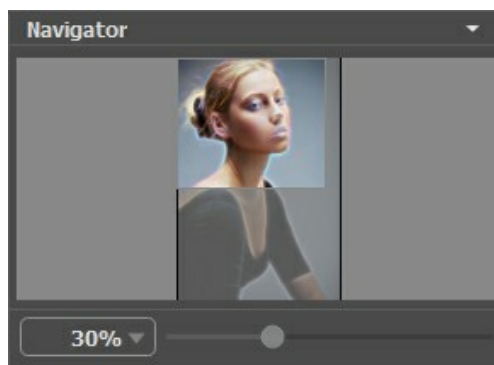
The button  activates the **Hand** tool which allows you scroll the image when it does not fit within the window at the desired scale. Bring the cursor over the image, and while keeping the left mouse button pressed move in the desired direction.

Double-clicking on the tool's icon  makes the image fit the window.

The button  activates the **Zoom** tool which changes the image's scale. To zoom in left click on the image. To zoom out left click with **Alt** on the image. Press **Z** to quickly access the tool.

Double-clicking on the tool's icon  makes the image scale to 100% (actual size).

Navigate and scale the image using the **Navigator**. The frame in the **Navigator** surrounds the area of the image which is visible in the main window; the area outside of the frame will be shaded. The frame can be dragged, thereby changing the visible portion of the image. To move the frame, place the cursor within it, left click the mouse, and then drag.



Navigator

To scroll the image in the window you can press the spacebar on the keyboard and drag the image with the left mouse button. Use the scroll wheel of the mouse to move the image up/down, by keeping the **Ctrl** key pressed – to the left/to the right, by keeping the **Alt** key pressed – scale the image. Right-click on the scroll bar to activate the quick navigation menu.

Use the slider to scale the image in the Image Window. When you move the slider to the right, the image scale increases. When you move the slider to the left, the image scale reduces.

You can also change the image scale by entering a new coefficient into the scale field. The fall-down menu shows some frequently used coefficients.

You can use hot-keys to change the image scale **+** and **Ctrl** **+** on Windows, **⌘** **+** on Mac to increase the image scale and **-** and **Ctrl** **-** on Windows, **⌘** **-** on Mac to reduce the scale.

Under the **Navigator** there is the Settings Panel with the **Image** and **Decoration** tabs:

Image: Here you can adjust the parameters of the [neon effect](#).

Decoration: You can add [text](#) to your image, adjust the [canvas](#), and apply a [frame](#).

Below, in the [Presets](#) field you can save the current settings as a preset to use them in the future. The current settings can be saved, edited, deleted. When you launch the program, it opens with the last applied parameters.

Under the settings you can see **Hints** for the parameters and buttons when you hover over them with the cursor. You can choose where the hints will be shown or hide them in the program's **Preferences**.


HOW TO USE THE PROGRAM

AKVIS Neon lets you transform a photo into a neon drawing using glow lines effects. The software is available as a *standalone* program and as a *plugin* filter for Photoshop and other editors.

To add a neon effect to your image, follow these steps:

Step 1. Open an image.

- If you work with the standalone edition:

The dialog box **Select File to Open** appears if you double-click on the empty workspace of the program or if you click on . Use the hot-keys: **Ctrl+O** on Windows, **⌘+O** on Mac. You can also drag the required image into the workspace of the program.

The standalone program supports **JPEG**, **RAW**, **PNG**, **BMP**, **WEBP**, and **TIFF** file formats.

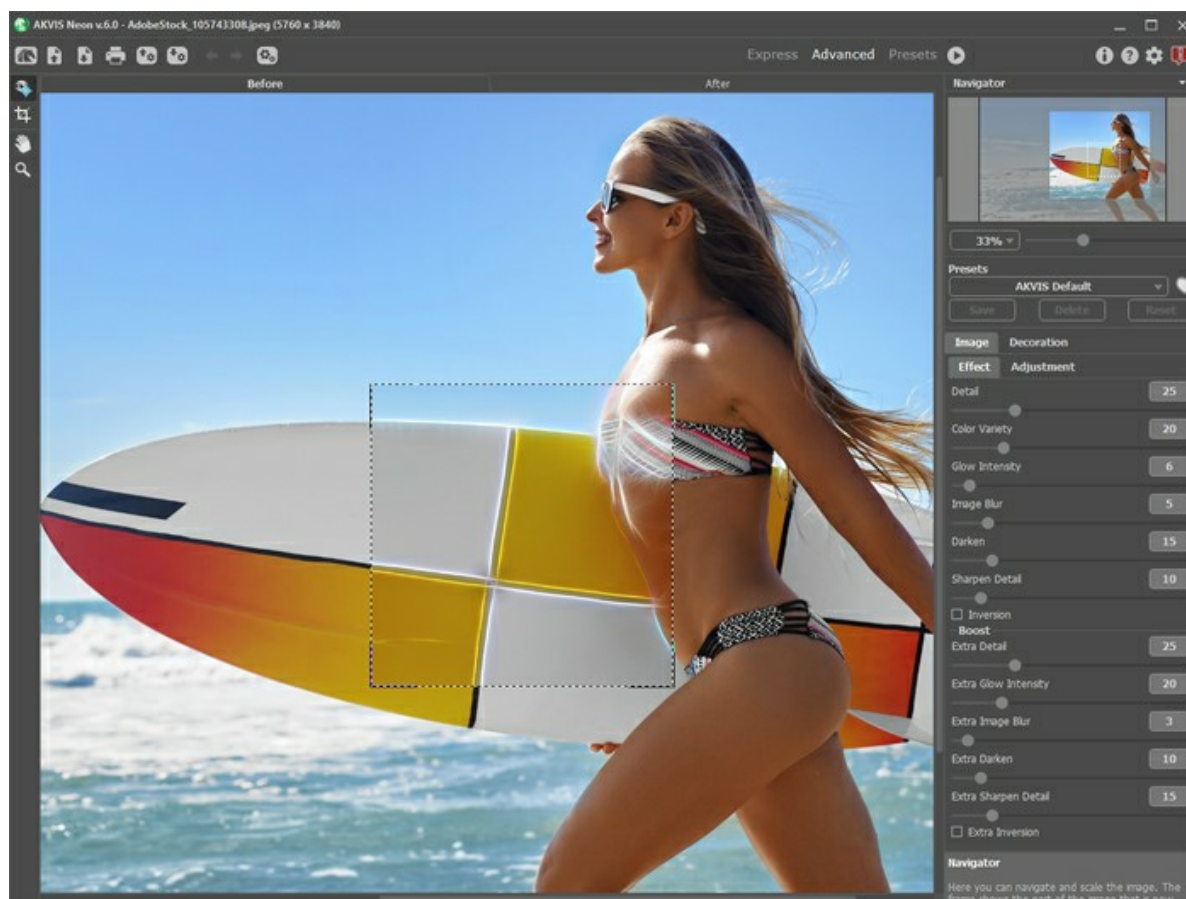
- If you work with the plugin:

Open an image in your **photo editor** by calling the command **File -> Open**.


Call the plugin from the menu of the editor:

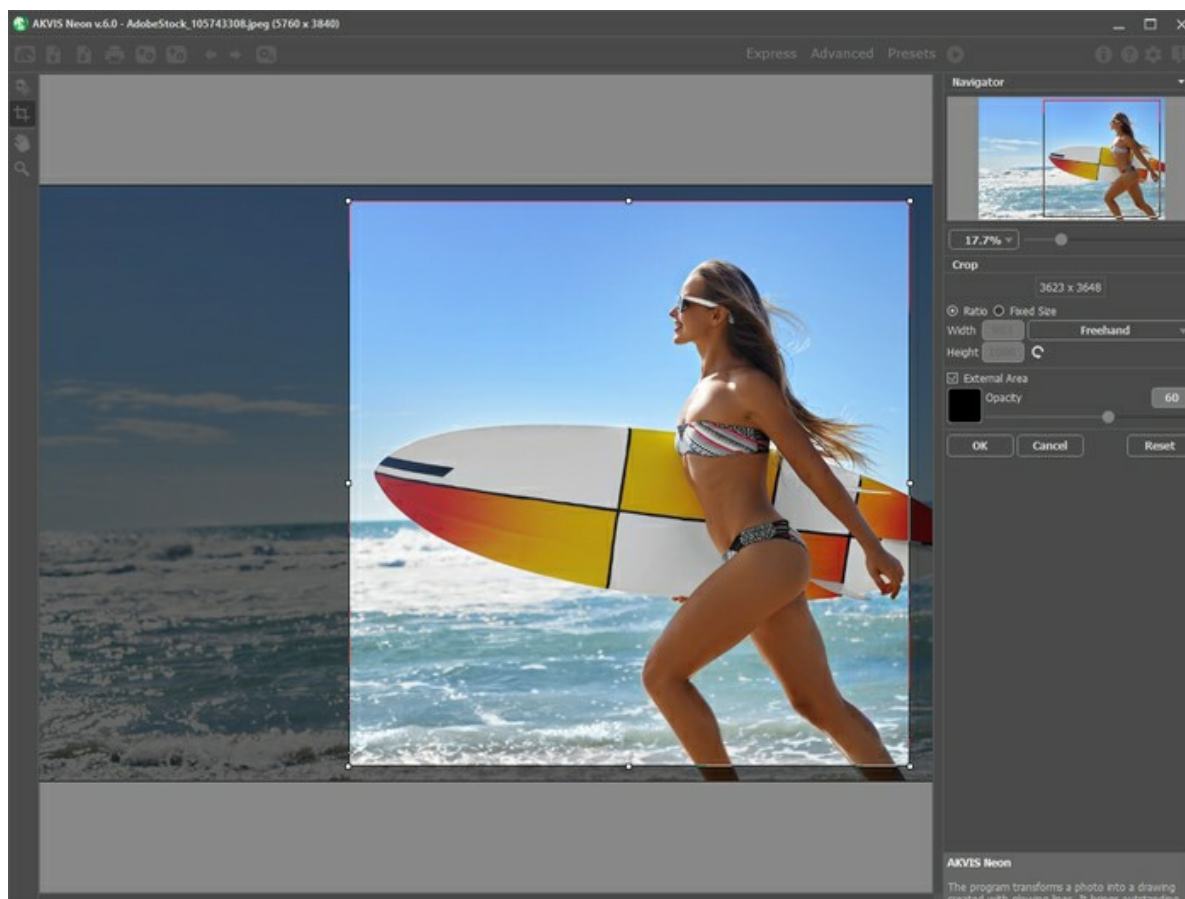
in **AliveColors** - Effects -> AKVIS -> Neon;
 in **Adobe Photoshop** - Filter -> AKVIS -> Neon;
 in **Corel PaintShop Pro** - Effects -> Plugins -> AKVIS -> Neon;
 in **Corel Photo-Paint** - Effects -> AKVIS -> Neon.

The workspace will be arranged according to the interface mode chosen in the Control Panel: **Express**, **Advanced**, or **Presets**.




Workspace of AKVIS Neon

Step 2. In the standalone version, before applying the neon effect, you can cut off unwanted areas of the picture and improve its composition with the **Crop** tool . If you use the plugin, you can do this in your image editor.




Crop Tool

Step 3. Adjust the effect settings in the **Image** tab. You can choose one of the **presets** or set the parameters to your liking.

The result will be instantly shown in the **preview window** in the **Before** tab if the **Quick Preview**  in the Toolbar is enabled.

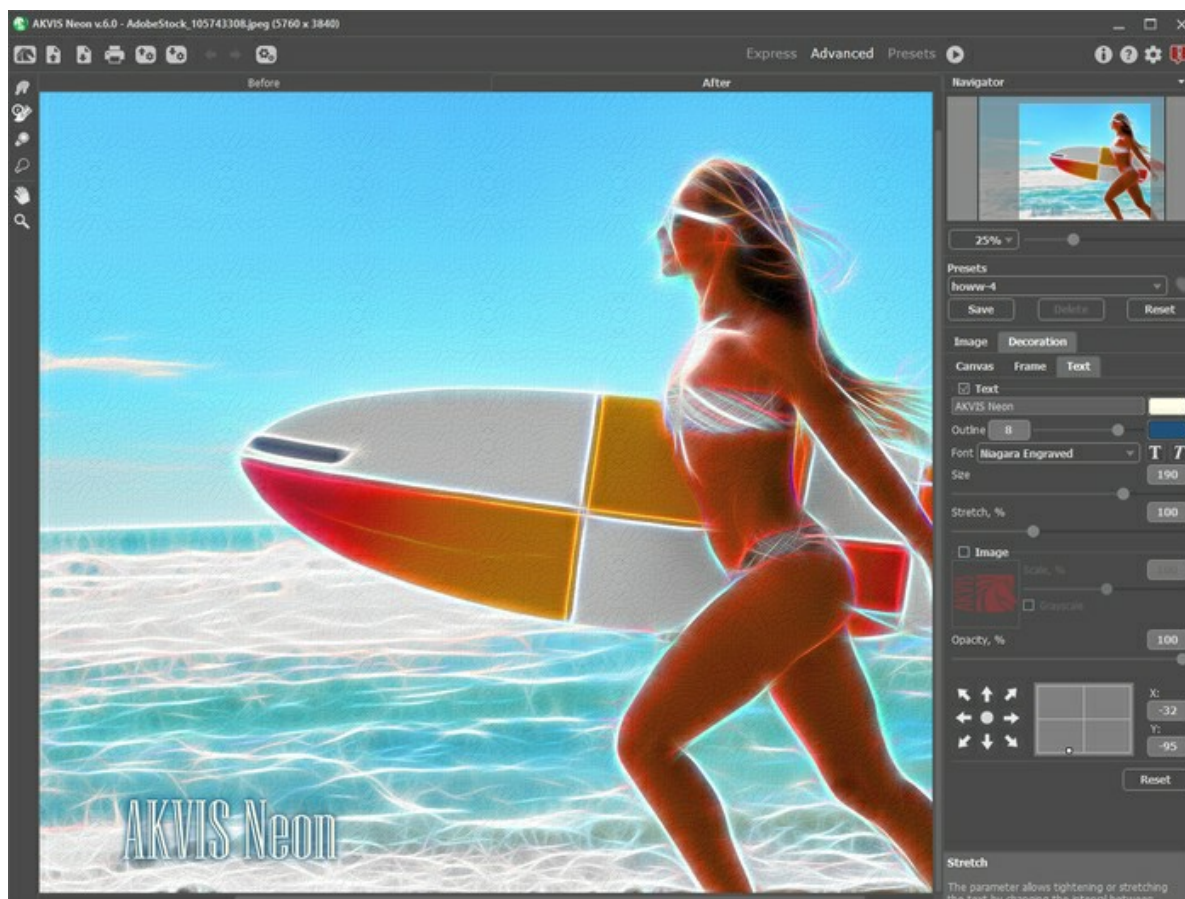


Preview Window

Step 4. Press the button  to process the entire image. To interrupt the process, you can click on the **Cancel** button right to the progress bar.

Step 5. To make your neon drawing even more impressive, you can use the **Decoration** options: adjust the **canvas**, apply a **frame**, and add **text** to your image.

Hint: The order of the application of **Canvas/Frame/Text** depends on the position of the tabs. Drag the tabs to change the order.








Neon Image + Canvas + Text


Step 6. If you like your new settings, you can save them as a **Preset** and use them later. Type a name for the preset into the **Presets** field and press **Save**. When a new preset is created, it will be available in all tabs and will contain their settings.

Click on a heart icon near the preset name field to add the preset to **Favorites** or to remove it from this group of presets.

[Learn more about the Neon Presets.](#)


Step 7. You can put the finishing touches to your image with the **post-processing tools**: **Smudge** , **History Brush** , **Lighten** , and **Darken** , available under the [Home Deluxe and Business](#) licenses, in the **After** tab.

Attention! Use these tools at the **final step**. If you run the processing  again, the changes made with the tools will be lost!


Step 8. In the standalone version, you can also [print](#) your picture with .

Step 9. Save the processed image.

- If you work with the standalone edition:

Click on  to open the **Save As** dialog box. You can use the hot-keys: **Ctrl** + **S** on Windows, **⌘** + **S** on Mac. Enter a name for the file, choose the format (**TIFF**, **BMP**, **JPEG**, **WEBP** or **PNG**) and indicate the target folder.

- If you work with the plugin:

Press the button  to apply the result and close the plugin window. The **AKVIS Neon** plugin will close and the picture will appear in the workspace of the photo editor.

Call the **Save As** dialog box using the command **File -> Save As**, enter a name for the file, choose the format and indicate the target folder.



Neon Effect on Photo

GLOW LINES EFFECTS

AKVIS Neon transforms a photo into a drawing created with glowing lines. The program brings outstanding visual effects to images making them look like painted with light.

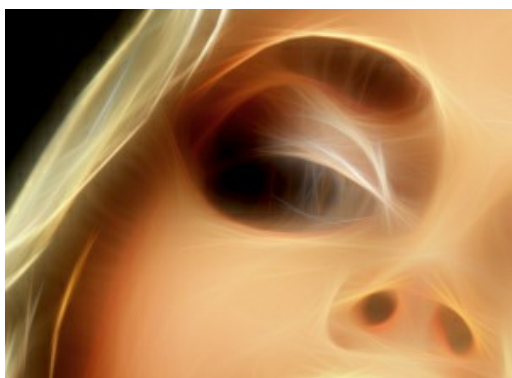


Glowing Drawing from Photo

Adjust the effect settings in the **Image -> Effect** tab.

Along with the basic parameters, you can use the auxiliary settings to boost the effect. The configurations of these two groups operate in a similar mode but will be applied at different stages of the image processing.

Detail / Extra Detail (0-100). The parameter defines the amount of lines which create a drawing.



Detail = 15



Detail = 70

Color Variety (0-100). When increasing the parameter, additional colors and shades will appear in the image. The higher the value of the parameter, the brighter and more saturated they become.

At the **Detail** value = 0, changing the parameter does not affect the image.

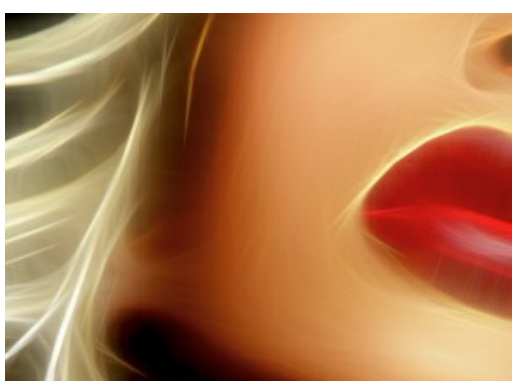


Color Variety = 30



Color Variety = 90

Glow Intensity / Extra Glow Intensity (1-100). The parameter lets you adjust the strength and brightness of the glow effect.



Glow Intensity = 20



Glow Intensity = 80

Image Blur / Extra Image Blur (2-25). The parameter modifies the degree of smoothing of the image. It simplifies the image and reduces the influence of the edges and contours of the original picture on the result.

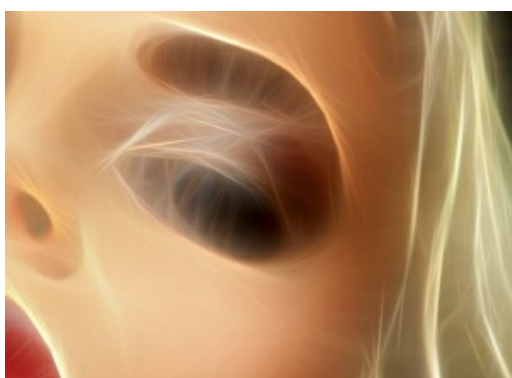


Image Blur = 5



Image Blur = 15

Darken / Extra Darken (0-100). The parameter adds darker shades to the image and fills the areas with black.

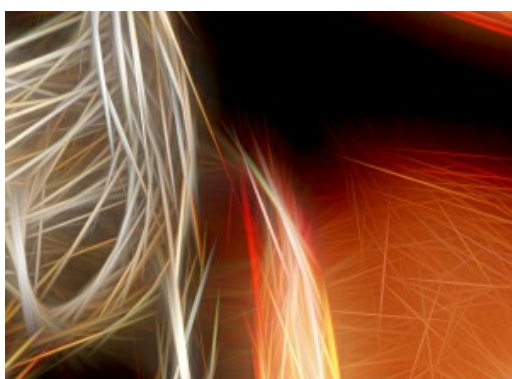


Darken = 15

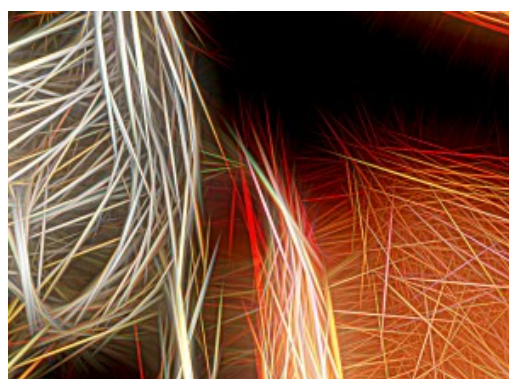


Darken = 60

Sharpen Detail / Extra Sharpen Detail (0-100). The parameter strengthens the sharpness of the lines.



Sharpen Detail = 10

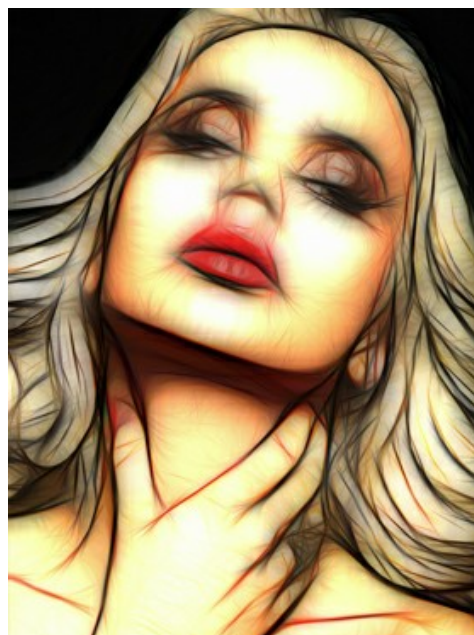


Sharpen Detail = 60

Inversion / Extra Inversion. If this check-box is enabled in any group of the parameters, the image appears more blurry, and the **Darken** option works contrariwise, i.e. lightens the image. With a double inversion, when both check-boxes are activated, light glow lines turn into dark contours.



Without Inversion
(both check-boxes are disabled)



Double Inversion
(both check-boxes are enabled)



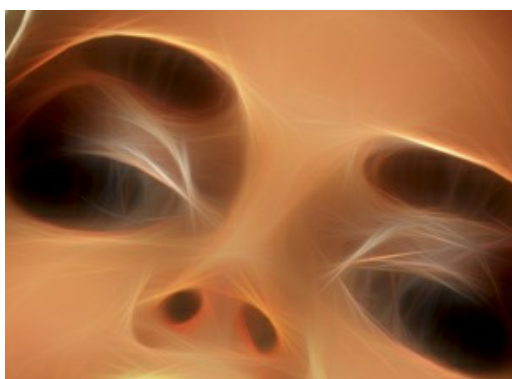
1st Inversion
(one of the check-boxes is enabled)



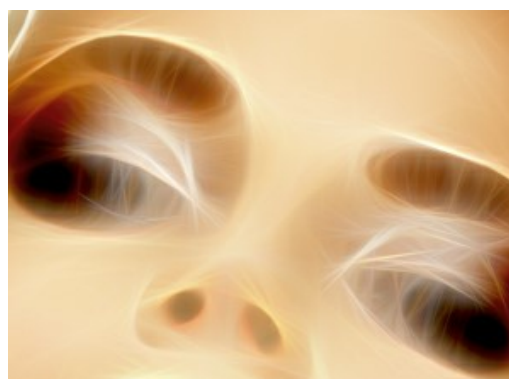
2nd Inversion

The **Adjustment** tab is used for quickly tuning the obtained result.

Brightness (-100 to 100). The parameter defines how the image is illuminated. At higher values the image is brighter while at lower values it is darker.

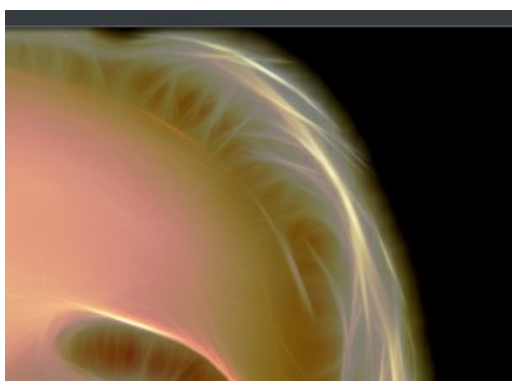


Brightness = -50

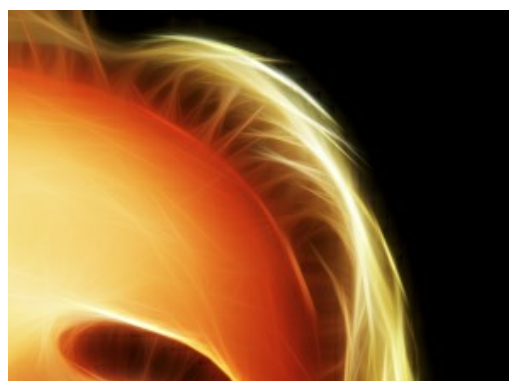


Brightness = +50

Contrast (-100 to 100). The parameter increases (at values greater than 0) or decreases (at values less than 0) the difference between light and dark areas of the image.



Contrast = -50



Contrast = +50

Saturation (-100 to 100). The parameter changes the intensity of color from a neutral gray to the brightest color.



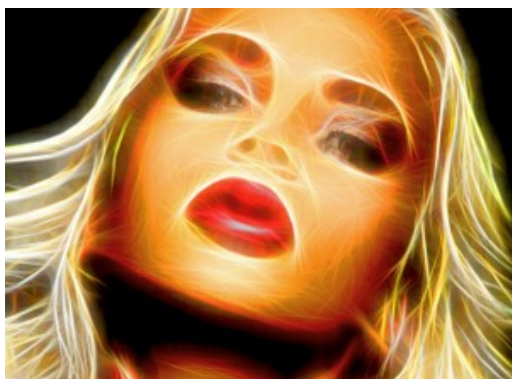
Saturation = -80



Saturation = +80

Colorize (0-100). This option lets you add a color tint to the image. You can select a color from the dialog box which opens by double-clicking on the color plate or pick from the image with the eyedropper that is activated by a left-click on the plate. Adjusting the parameter you can change the degree of color mixing. The maximum value gives a monotone, single color, effect.

Note! This feature is available only for [Home Deluxe](#) and [Business](#) licenses.



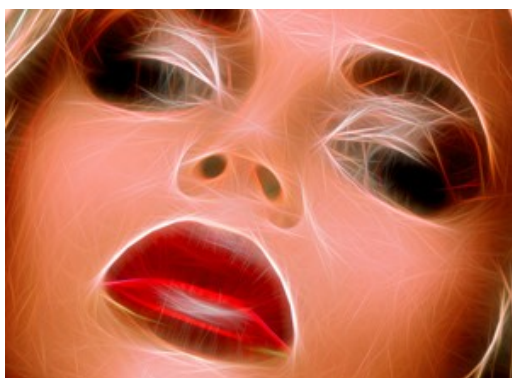
Original Colors
(the check-box is disabled)



Adding Yellow Tint
(the check-box is enabled, value = 90)

The **Hue** group contains the settings to manipulate colors without affecting the image brightness.

Shift in Light (-180 to 180). The parameter changes only light pixels.

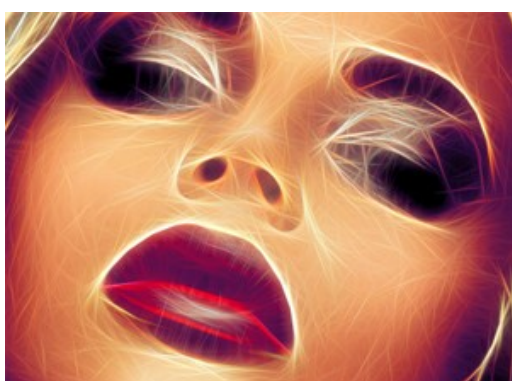


Shift in Light = -90

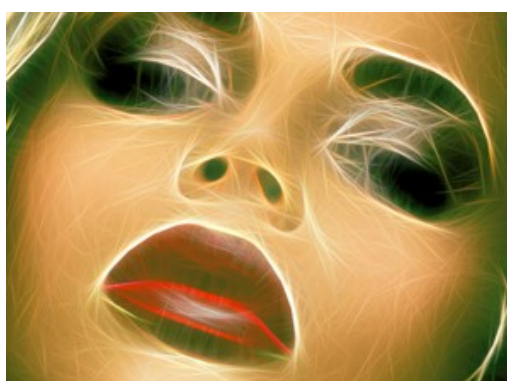


Shift in Light = +90

Shift in Dark (-180 to 180). The parameter changes only dark pixels.



Shift in Dark = -90



Shift in Dark = +90

Total Shift (-180 to 180). The parameter adjusts all the colors in the image.



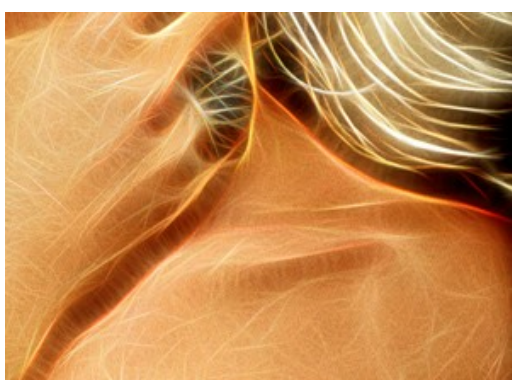
Total Shift = 0



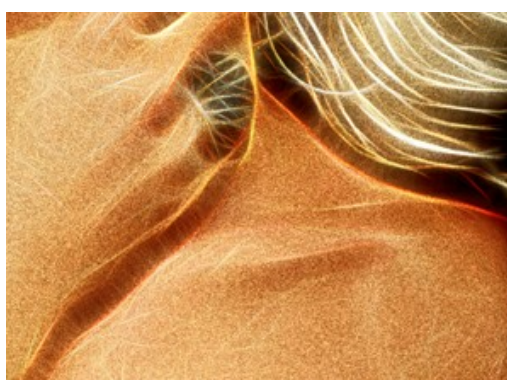
Total Shift = 125

With the **Hatching** parameters you can add the pencil hatching effect to the image.

Intensity (0-100). The parameter sets the strength of the effect.

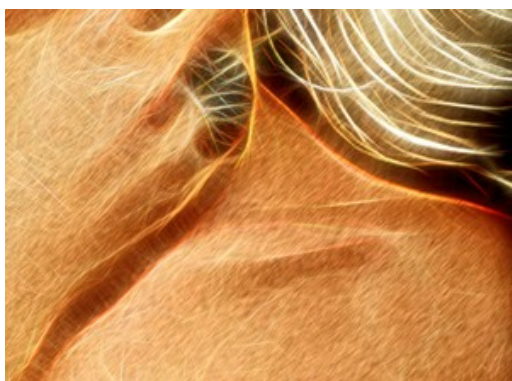


Intensity = 35

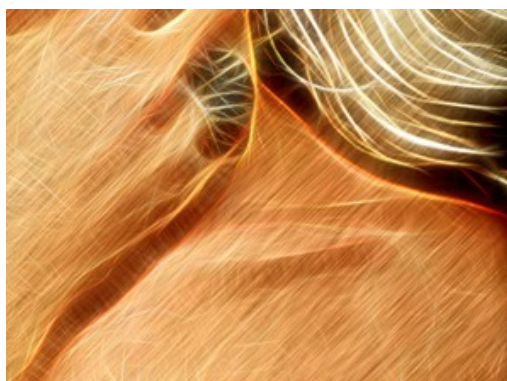


Intensity = 100

Stroke Length (0-100). The parameter changes the length of the strokes that allows you to achieve different results: from stippling with dots to hatching with long straight lines.

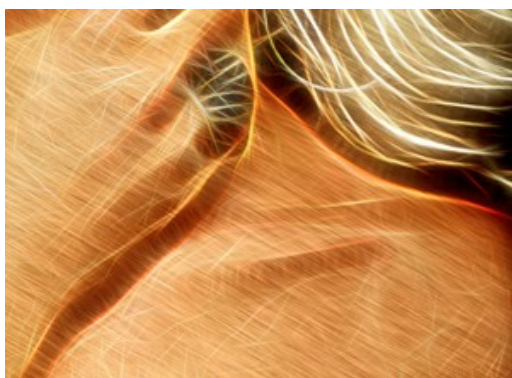


Stroke Length = 30

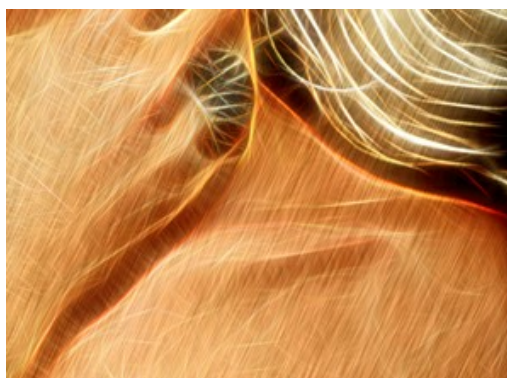


Stroke Length = 100

Angle (-90 to 90). The parameter sets the pitch angle of the strokes (in degrees).



Angle = 30



Angle = -65

The settings of the **Deformation** tab allow you to reshape and distort an object. The effect makes the image look more expressive and playful.

Attention! Deformation effect is only available for [Home Deluxe](#) and [Business](#) licenses.

Strength (0-100). The intensity of the effect. At 0, there is no deformation.



Strength = 30

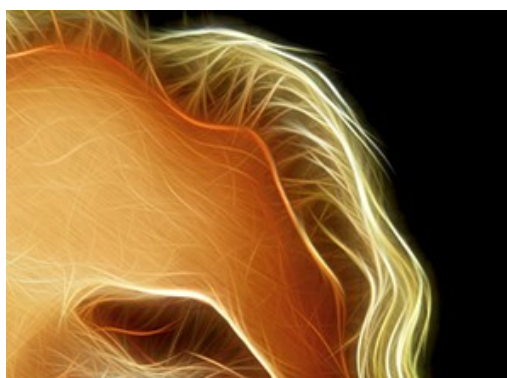


Strength = 100

Deformation Size (5-100). The size of distortions.



Deformation Size = 10

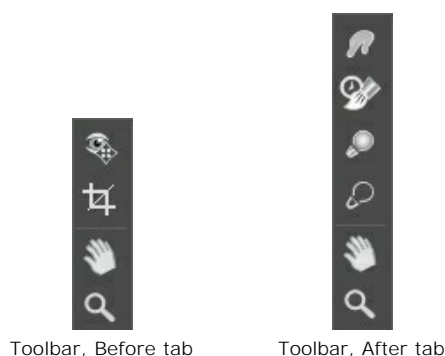


Deformation Size = 80

Random Seed (0-9999). This is the starting number for the random number generator that defines the shape of distortions.

TOOLS AND THEIR OPTIONS

In **AKVIS Neon** different tools become visible depending on the active tab, **Before** or **After**.



The tools in the program are divided into the groups: **pre-processing** (**Before** tab), **post-processing** (**After** tab), and **additional** tools (**Before** and **After** tabs).

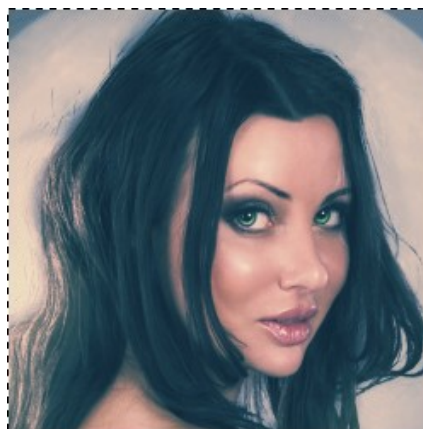
Hint:

Use the buttons / to undo/redo the operations made with the tools , , , .

Pre-Processing Tools (on the **Before** tab):

Quick Preview switches on/off the preview window. It is a square frame outlined with the "marching ants" that immediately displays changes made with the image.

You can drag the preview square to any position with the left mouse button or with the double click. This lets you quickly preview the effect in different areas of the image. To compare the result of automatic conversion with the original picture, click and keep mouse pressed within the preview area.



Preview Window

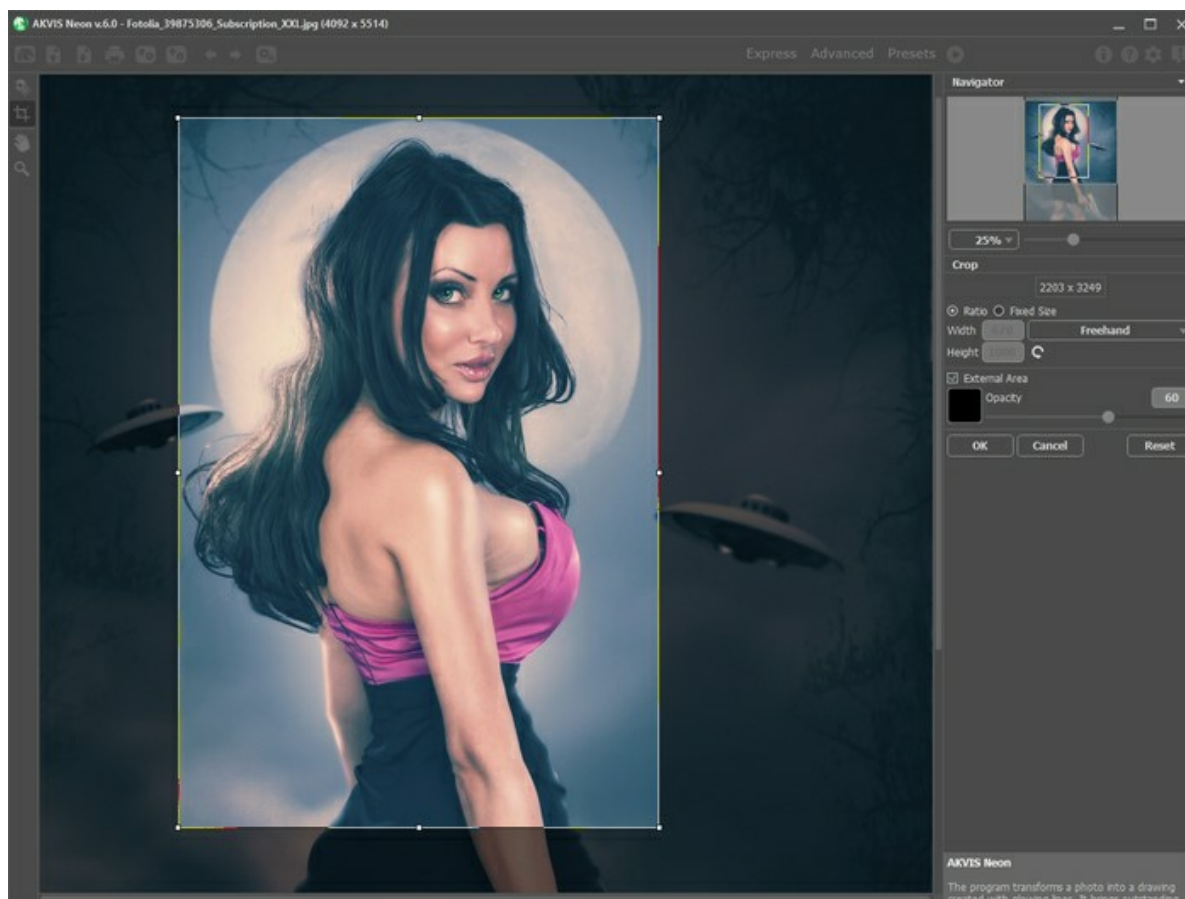
You can adjust the preview window size in the program's [preferences](#) .

Crop (in the standalone version) lets you cut off unwanted areas in the image. The tool is useful when you want to improve the image composition, straighten a crooked photo, turn a horizontal photo into a vertical one and contrariwise.

Note: This tool is applied to the original image! Use it before the neon effect.

You can change the crop area by dragging the sides and the angles of the bounding frame.

To apply the result and remove the areas outside the frame, press **OK** or use **Enter**. To cancel the operation and exit the tool, press **Cancel** or use the **Esc**-key. To restore the original area keeping the tool active, press **Reset** button.








Crop Image

Adjust the crop options:


You can choose the size of the crop rectangle using the **Ratio** or **Fixed Size** options.

If the **External Area** check-box is enabled, you can change the color and opacity of the outer parts.

Post-Processing Tools (on the **After** tab, for Deluxe/Business):

Attention! The tools , , ,  are only available under the [Home Deluxe/Business](#) licenses, on the **After** tab. **Use them at the final step.** If you re-run the image processing , the changes made with the post-processing tools will be lost!

The tools' options are shown in a pop-up box which appears after right-clicking in the image.

Smudge  is designed for mixing colors in the picture and removing irregularities.

The tool's parameters:

Size (1-300). The maximum width of a line drawn with the tool.

Hardness (0-100). The amount of blurriness of the outer edge. The higher the value, the harder the brush edge is.

Strength (1-100). The intensity of smearing the paint in the stroke. The higher the value, the more color is smeared.



Neon Effect



Using Smudge

History Brush  lets you fade the neon effect and restore the image to its original state.

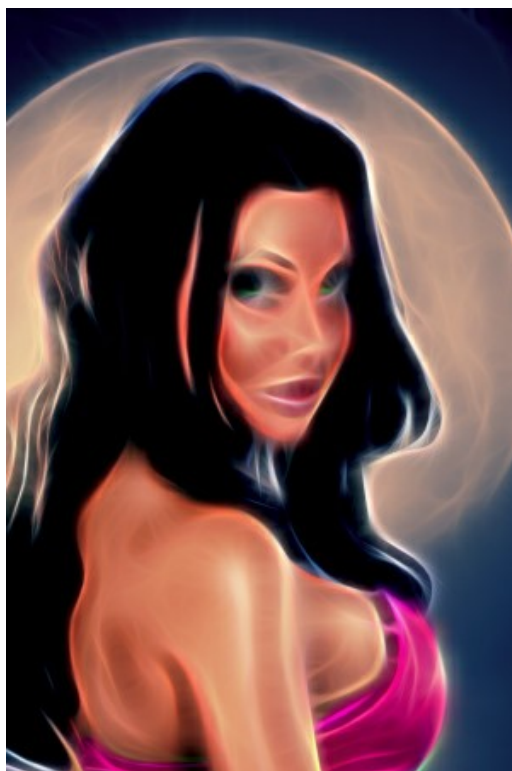
The tool's parameters:

Restore to Original. If the check-box is enabled, the brush weakens the neon effect, as well as the result of the manual processing made with the tools. If it is disabled, the brush edits only changes made with the tools, but does not affect the neon effect.

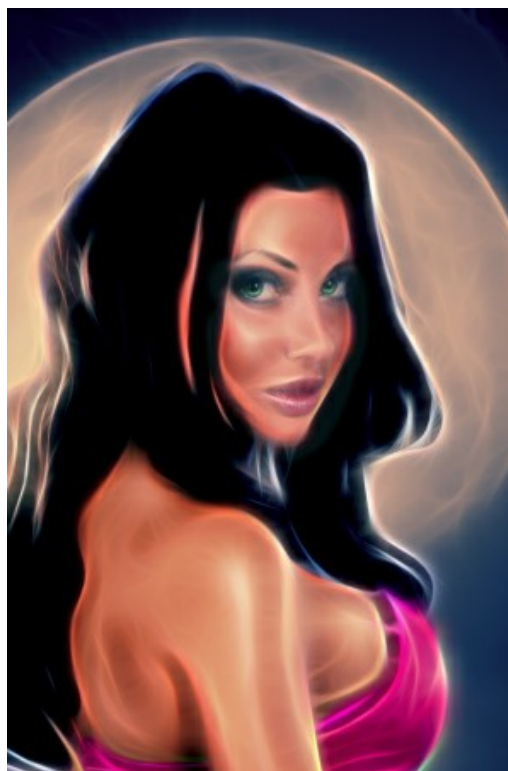
Size (1-1000). The maximum width of a line made by the brush.

Hardness (0-100). The blurriness of the tool's edges. The less the value the more blurry the tool's edges become. At value 100% the border between the brush's edges and the background is very distinct; at lower values the transition between these areas is smoother.


Strength (1-100). The degree of restoration to the original state. At lower values there will be less restoration and more blending with the effect; at value 100% the original image will be restored more completely.



Neon Effect



Using History Brush

Lighten  tones an image by enhancing the brightness of colors. The effect is increased with each successive brush stroke.

The tool's parameters:

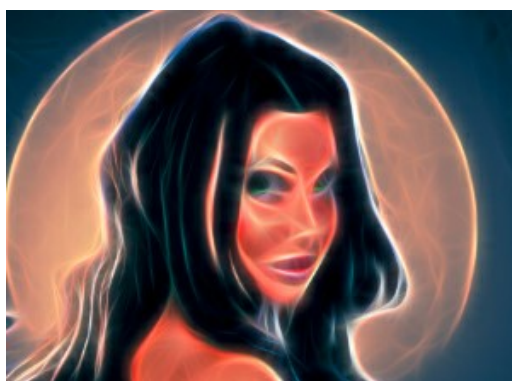
Size (1-1000). The diameter of the tool.

Hardness (0-100%). The amount of blurriness of the outer edge. The higher the value, the harder the brush edge is.

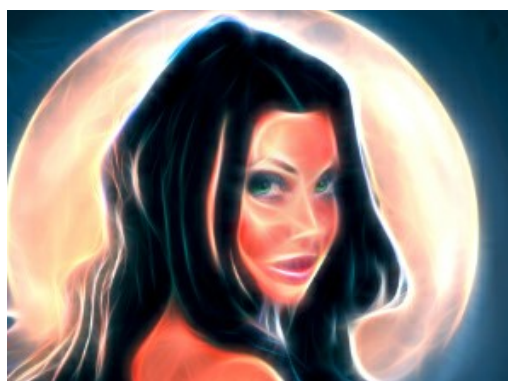
Strength (1-100). The intensity of the effect in the brush stroke.

Range. The drop-down menu contains three ways to process pixels:


- **Shadows**. Darker areas are processed more than lighter areas.
- **Midtones**. The brush affects both light and dark areas equally.
- **Highlights**. Lighter areas of the image are processed more than darker areas.



Neon Effect



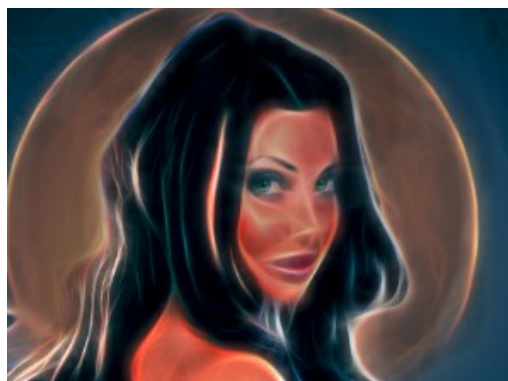
Using Lighten Tool

Darken  tones an image by decreasing the brightness of colors.

The parameters are the same as for the **Lighten** tool.





Neon Effect





Using Darken Tool

Additional Tools (available on both tabs, for all licenses):

Hand  lets you scroll the image when it does not fit within Image Window at the desired scale. To use it click on the button, bring the cursor over the image, and while keeping the left mouse button pressed move in the desired direction. The hot-key is **H**.

Double-clicking on the tool's icon  on the Toolbar makes the image fit the window.

Zoom  lets you change the image's scale. To zoom in left click on the image. To zoom out left click with **Alt** on the image. The hot-key is **Z**.

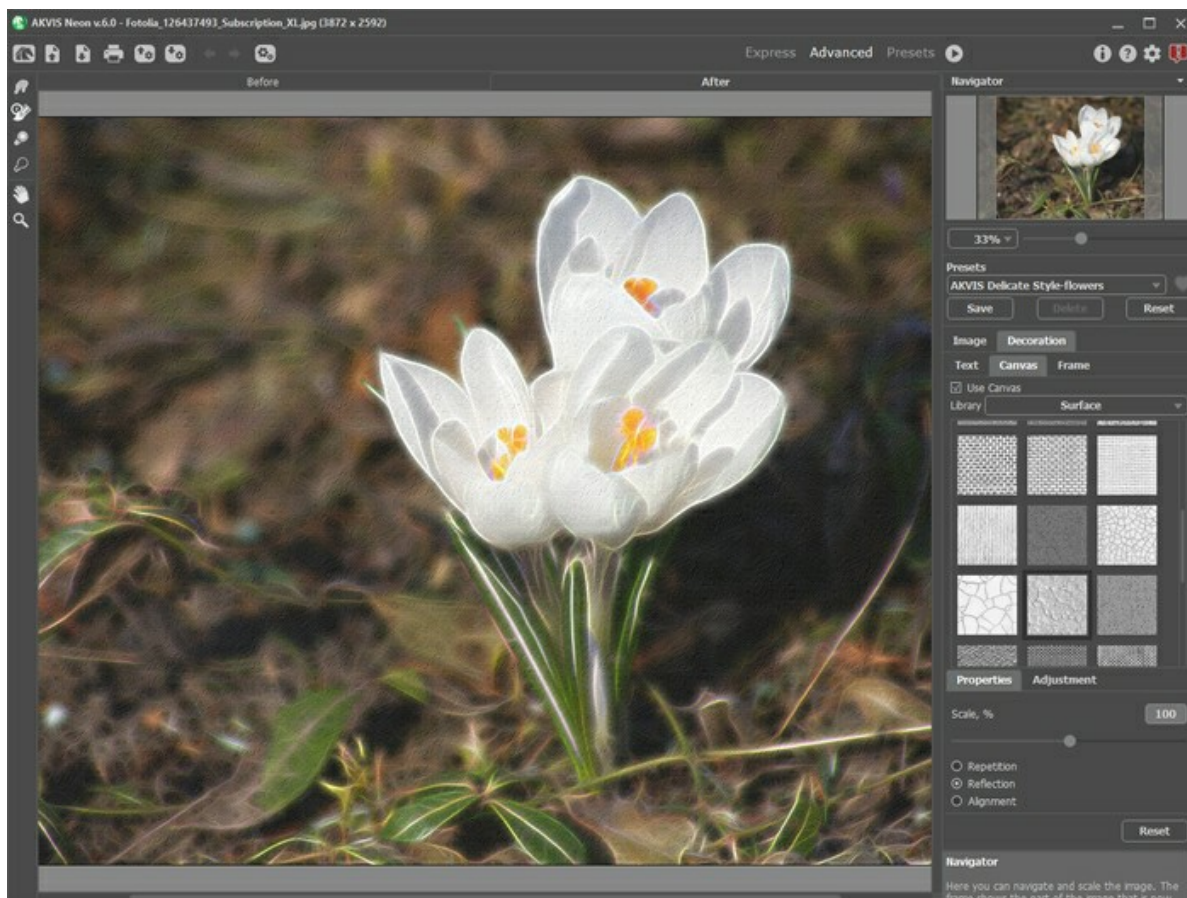
Double-clicking on the tool's icon  makes the image scale to 100% (actual size).

ADJUSTING A CANVAS SURFACE

With **AKVIS Neon** you can also put your glowing image to any surface: sanded paper, brick wall, etc.

In the **Decoration** group switch to the **Canvas** tab and enable the **Use Canvas** check-box.

Hint: You can drag the **Canvas/Frame/Text** tabs to change the order of the application of the decoration effects.



Neon Effect on a Textured Paper

You can choose a texture from **Library** -> **Surface** or load your own sample: **Library** -> **Custom...**

[Adjust the canvas settings.](#)

ADDING A FRAME TO A GLOWING IMAGE

In **AKVIS Neon** you can add a frame to an image to complete your artwork.

In the **Decoration** group switch to the **Frame** tab, enable the check-box, and choose a frame.

Hint: You can drag the **Canvas/Frame/Text** tabs to change the order of the application of the decoration effects.



Frame Your Neon Drawing

You can apply these frames to decorate your picture:

[Classic Frame](#)

[Pattern Frame](#)

[Strokes](#)

[Vignette](#)

[Passe-Partout](#)

ADDING TEXT OR WATERMARK TO A NEON DRAWING

You can personalize your glowing image by adding a signature, a logo, or a watermark.

In the **Decoration** group switch to the **Text** tab and enable one of the modes: **Text** or **Image**.

Hint: You can drag the **Canvas/Frame/Text** tabs to change the order of the application of the decoration effects.

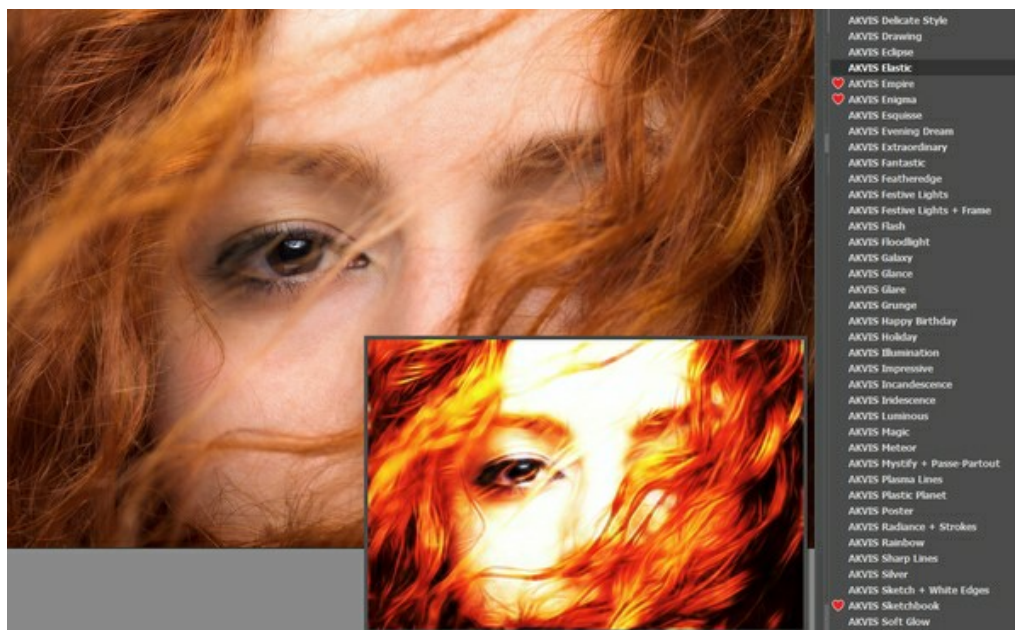


Adding Text

Adjust the text/watermark settings.

NEON EFFECT PRESETS

AKVIS Neon includes a number of ready to use presets (settings combinations) for the glowing neon effect which help you start working. When moving a cursor over a preset in the drop-down list, the quick result appears in the small window on the left side of the list.



To process the entire image using a preset, select it from the list and click on .

A preset contains the settings of both tabs (**Image** and **Decoration**).

You can apply one of the AKVIS presets or modify the parameters to achieve the desired result.

To create your own preset, type a name for the preset into the field and press **Save**.

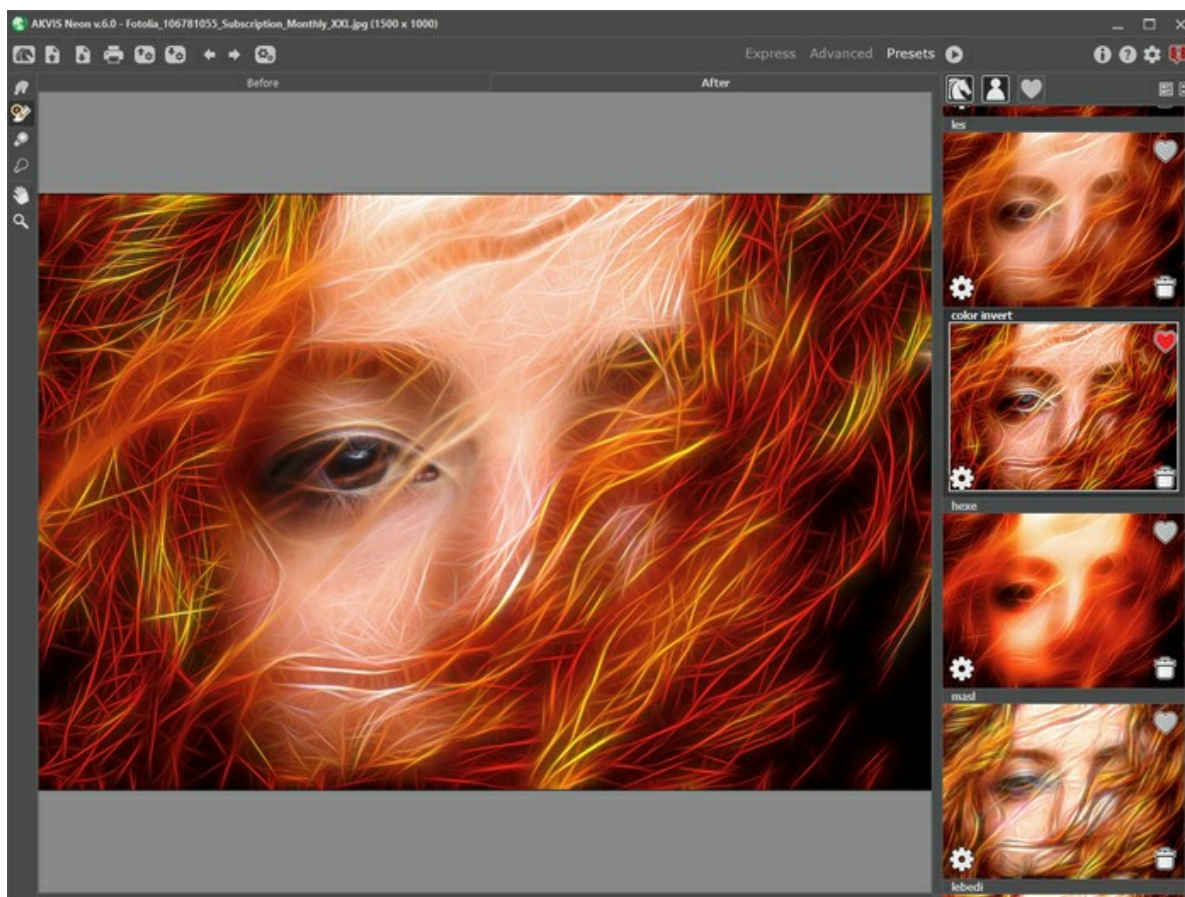
To return to the default settings of the selected preset, click on **Reset**.

To delete your preset, choose it from the drop-down list and press **Delete**. The AKVIS built-in presets cannot be removed.

Next to the preset name field there is a heart icon. Click on it to add the selected preset to **Favorites** or to remove it from this group of presets.

Presets Gallery

Click on the **Presets** button in the top panel to switch to the visual display mode of presets with the live preview.



Presets Gallery

You will see a list of presets sorted alphabetically (AKVIS presets) or by creation date (user presets). When an image is loaded into the program, preset thumbnails are generated.

Click on a thumbnail to select the preset. Double-click on the thumbnail starts processing the entire image.

Double-click on the name of the user preset to rename it. The AKVIS built-in presets cannot be renamed.

Use these buttons to change the display of presets:



- to show **AKVIS Presets**;



- to show **User Presets**;



- to show presets marked as **Favorites**.

Presets thumbnails can be arranged in two ways:



- as a vertical list;



- filling in the entire program area.

The preset control buttons are duplicated by the context menu commands:



Add to Favorites /  **Remove from Favorites**;



Rename Preset (only for user presets);



Move Up (only for user presets);





Move Down (only for user presets);



Delete Preset (only for user presets);




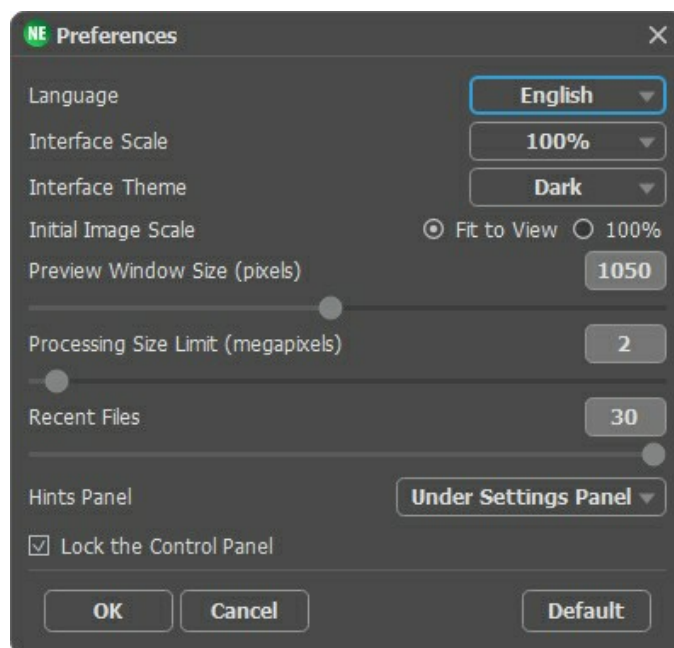
Show Parameters.


It's possible to export and import user presets (a file with the **.neon** extension) using these buttons:  and .

[Read more about import and export user presets.](#)

PROGRAM PREFERENCES

The button  opens the **Preferences** dialog box that looks like this:



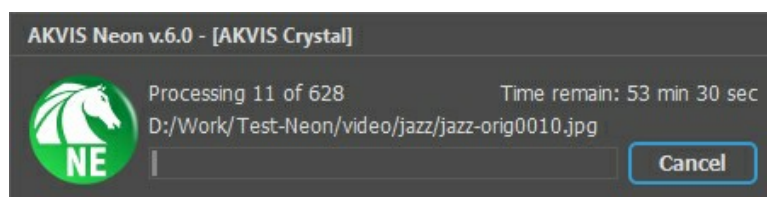
- **Language.** Change the program language by selecting another from the drop-down list.
- **Interface Scale.** Choose the size of the interface elements. When it is set to **Auto**, the program workspace will automatically scale to fit the screen resolution.
- **Interface Theme.** Select the style of the program interface: **Light** or **Dark**.
- **Initial Image Scale.** Choose the way the image is scaled in the main window after loading:
 - **Fit to View.** The scale adjusts so that the image will be completely visible;
 - **100%.** The actual size is used, the image doesn't scale.
- **Preview Window Size.** Choose the desired value for the size of the [quick preview area](#): from 200 x 200 to 2,000 x 2,000 pixels.
- **Processing Size Limit.** Image processing is a very time-consuming operation. This parameter accelerates image processing by temporary reducing the size of the image to be processed. When the file size (in megapixels) does not exceed the defined value, the image is processed in the usual way. If the loaded file is larger, the program will reduce the image, process it and enlarge it again to the initial size.
- **Recent Files** (available only in the standalone version). The number of recent documents. The list of the recent files, sorted by time, become visible by right mouse clicking on . Maximum: 30 files.
- **Hints Panel.** You can choose how the hints will be shown:
 - **Under Image Window;**
 - **Under Settings Panel;**
 - **Hide.**
- **Lock the Control Panel** check-box. It disables the possibility to hide/show the top panel. If the check-box is selected the panel is always visible.

To apply changes made in the **Preferences** window press **OK**.

If you need, click on the button **Default** to return to the default settings.

BATCH PROCESSING

AKVIS Neon supports the **Batch Processing** feature that lets you automatically convert a series of images with the same effect settings and saves you time and efforts. It is useful when creating a number of illustrations at the same style for a booklet or when processing all frames of video.



If you use the standalone version of **AKVIS Neon**, [read the instructions here](#).

If you use the **Neon** plugin in Photoshop, [use this tutorial](#).

BATCH PROCESSING WITH PHOTOSHOP PLUGIN

The AKVIS plugins support the automation feature in **Adobe Photoshop**.

Batch processing is very useful and time saving when you have to apply the effects to a number of photos. This method applies the same settings to a folder full of images.

Even if you have never used batch processing you will find no difficulties in understanding it. First you create an **Action** in Photoshop and then apply it to a photo folder.

Follow the instructions:

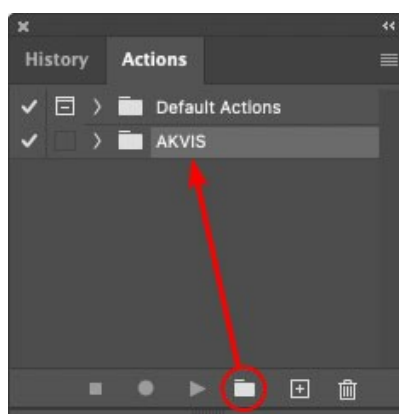
Step 1. Create two new folders, for example: "source-files" and "result-files". Place original images into the "source-files" folder. The results will be saved in the "result-files" folder.

Step 2. Open one of the original images in **Adobe Photoshop**. We will use this photo to adjust the plugin's settings and create an action.



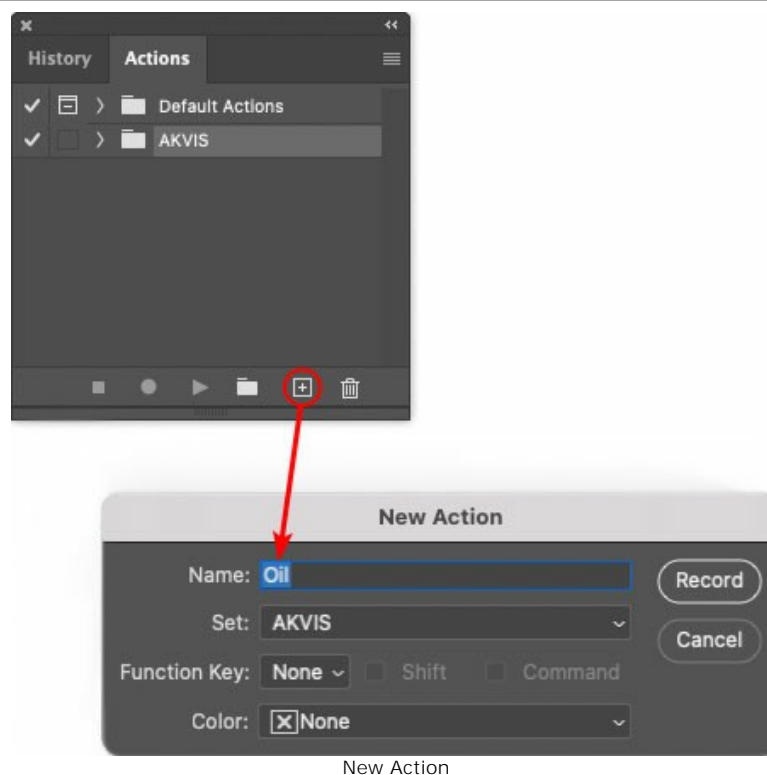
Step 3. In the **Actions** palette click **Create New Set** button. In the dialog window give a name for a new set of actions, for example, "AKVIS".

If you already have a special set for the AKVIS actions, you can just choose it.

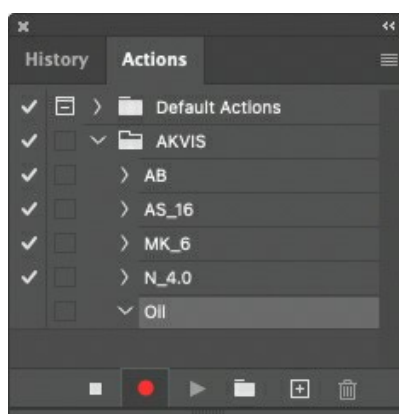


Actions Palette

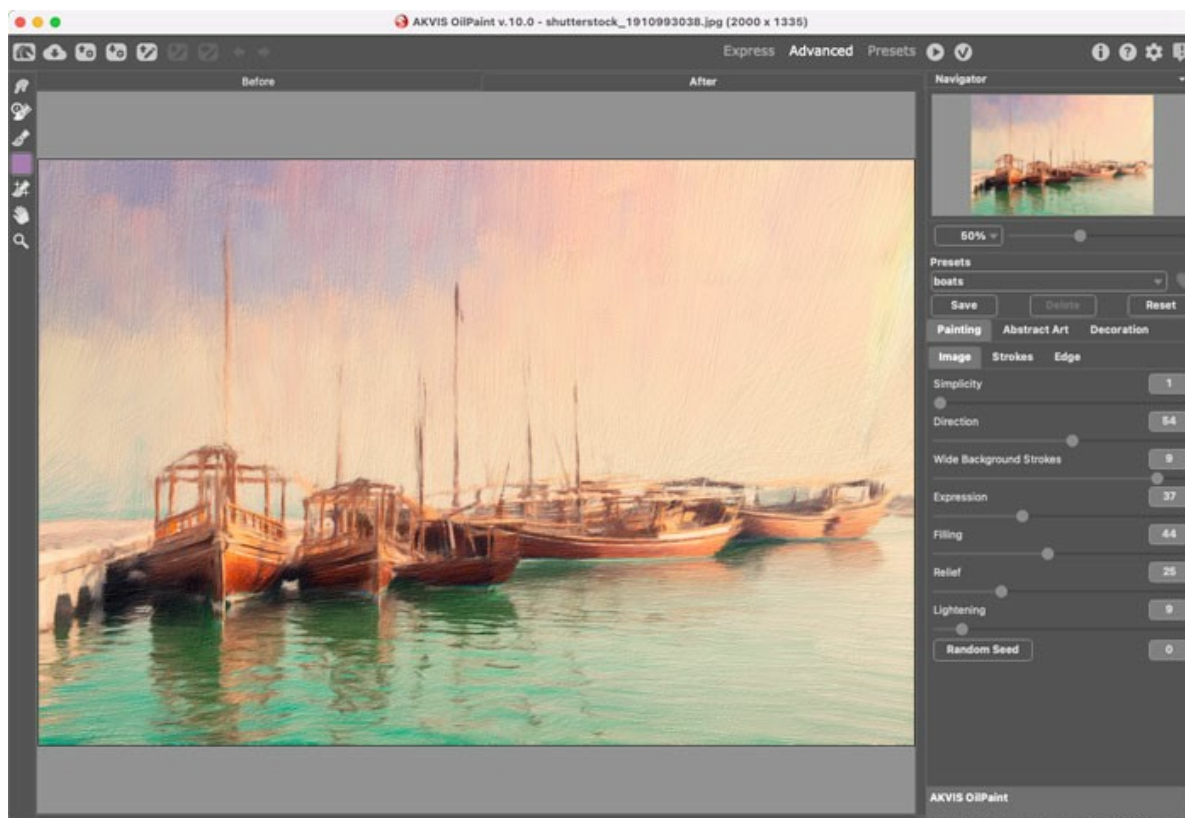
Step 4. Press **Create New Action** and give a name for it, for example, "Oil".




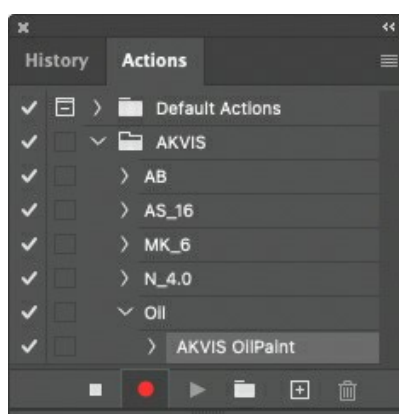
Press the **Record** button, and the recording of the action will immediately start.



Step 5. Call the plugin and adjust its parameters.

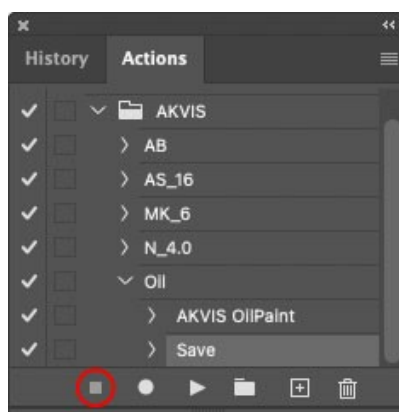


Step 6. Press the button . The plug-in window will close and the effect will be applied to the image. In the **Actions** palette, in your new action, you will see a new line with the plugin's name.



Step 7. Remember that the action is still being recorded. Now, you should save the image. Choose **Save As** in the **File** menu and save the image into the destination folder.

Step 8. Stop the action recording by pressing **Stop playing/recording** at the bottom of the **Actions** palette.



Step 9. Delete the file that you have just saved.

Step 10. The action is created and you can proceed to batch processing of the photos.

In the **File** menu of the editor choose **Automate -> Batch**.

Step 11. In the **Batch** dialog window and set the parameters:

In the **Set** drop-down list choose "AKVIS" and the new action.

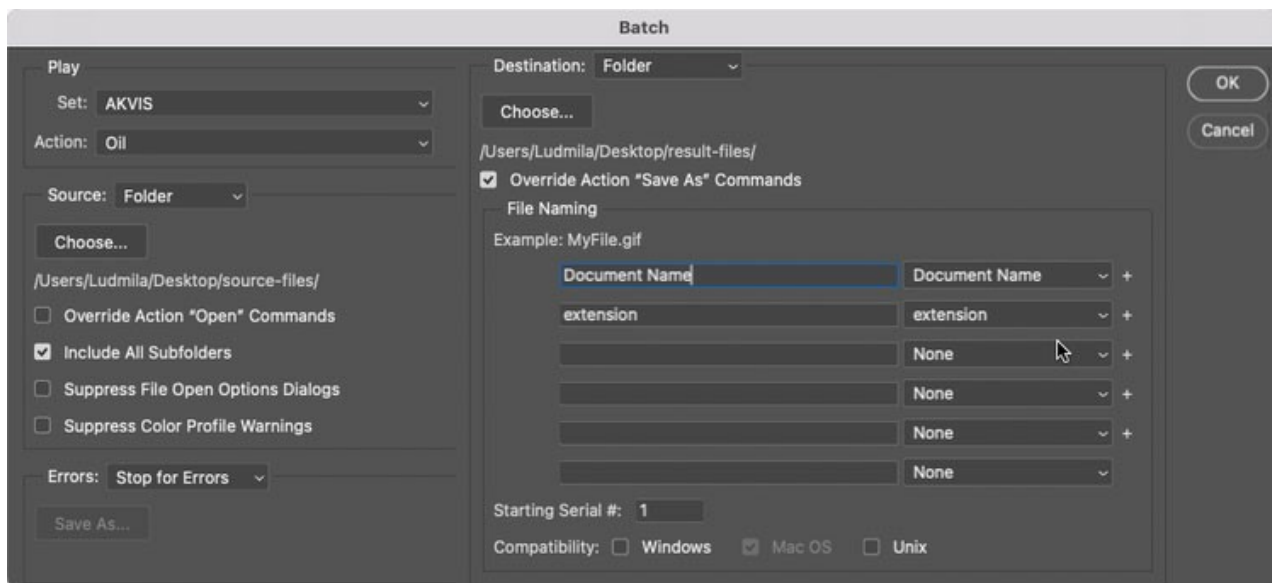
In the **Source** option set **Folder**. Press the **Choose...** button and select "source-files".

As the Open command was not recorded in the action, the **Override Action "Open" Commands** check-box should be deactivated.

For **Destination** select **Folder**, then press the **Choose...** button and select "result-files".

Activate **Override Action "Save as" Commands** check-box.

In the **File Naming** section you can create the filenames structure for the resulted images. If you do not want to change the names, in the first combo-box choose **document name**, and in the second - **extension**.



Step 12. Press **OK** to start processing. Photoshop will apply the AKVIS plugin to all photos in the "source-files" folder, one by one, and will save them to the "result-files" folder.

PRINT IMAGES IN AKVIS NEON

In the standalone version of **AKVIS Neon** you can print the image. Press the button  to open the **Print** options.



Print Options in AKVIS Neon

Adjust the parameters appearing in the Settings Panel:

Choose a printer from the list of available devices, set the desired resolution, as well as the number of copies to print.

In the **Orientation** group, set the position of paper: **Portrait** (vertically) or **Landscape** (horizontally).

Click the **Page Setup** button to open a dialog box to choose the size of the paper and its orientation, as well as the print margins.

Press the **Reset Margins** button to return the page margins to the default size.

Change the size of the printed image adjusting the parameters **Scale**, **Width**, **Height** and **Fit to Page**. These parameters have no effect on the image itself, just on the print version. You can change the size of the printed image by entering any value in %, or by entering new values in **Width** and **Height**.

To adjust the size of the image to the paper size, select **Fit to Page**.

Move the image on the page with the mouse or align it using the arrow buttons.

You can activate **Frame** for the image and adjust its width and color.

Choose the **Background Color** by clicking on the color plate.

In the **Page** tab, you can adjust printing of the multiple copies of the image on a single sheet.



Print Page

- ◊ **Copies per Page.** It lets you specify the number of copies of the image on one page.
- ◊ **Horizontally** and **Vertically.** These parameters indicate the number of rows and columns for the copies of the image on the page.
- ◊ **Spacing.** The parameter sets the margins between the copies of the image.

In the **Poster** tab, it's possible to customize printing of the image on multiple pages for the subsequent junction into a large picture.



Print Poster

- ◊ **Pages.** If the check-box is enabled, you can specify the maximum number of the pages in which the image will be divided. The image scale will be adjusted to fit this number of the sheets. If the check-box is disabled, the program will automatically select the optimal number of the pages in accordance with the actual size of the image (scale = 100%).
- ◊ **Glue Margins.** If the check-box is enabled, you can adjust the width of the padding for bonding sheets. Margins will be added to the right and to the bottom of each part.
- ◊ **Show Numbers.** With the enabled check-box, a sequence number of each part, by a column and a row, will be printed in the margins.
- ◊ **Lines of Cut.** Activate the check-box to display the cut marks in the margins.

To print the image with the chosen parameters, press the **Print** button.

To cancel and close the printing options click on **Cancel**.

Click the **Properties...** button to open a system dialog box that enables you to access the advanced settings and send the document to print.

CHRISTMAS & NEW YEAR CARD

Using **AKVIS Neon** you can convert a digital photo into a sparkling greeting card that helps you create a festive atmosphere and get into the Christmas spirit.



Original Image



Result

This example was created using **AKVIS Neon** and **AKVIS ArtSuite** plugins as well the graphic editor **Adobe Photoshop**.

Follow the steps to create a Christmas & New Year card:

Step 1. Open an image in **Adobe Photoshop**.



Source Photo

Step 2. Use the **Horizontal Type Tool** to add a congratulatory inscription.



Adding a Congratulatory Inscription


Merge the text and the background layers.

Step 3. Add a frame to a picture using the **AKVIS ArtSuite** plugin (command **Filter -> AKVIS -> ArtSuite**).

Select **Spray** from the list of the frames and adjust the parameters to your taste.

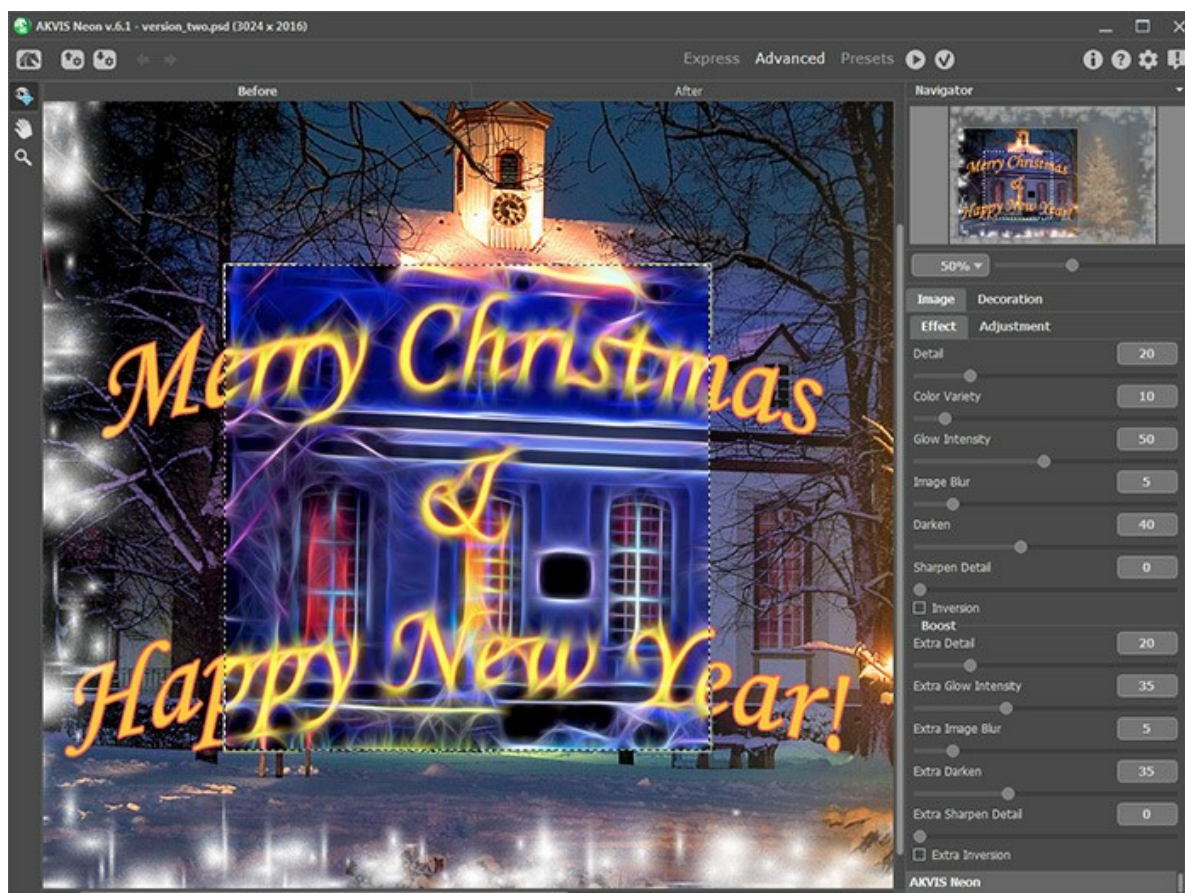


AKVIS ArtSuite Plugin


Click on the button  to apply the result and return to the image editor.


Step 4. Transform the image into a neon drawing. Call the **AKVIS Neon** plugin (command **Filter -> AKVIS -> Neon**).

You can either use one of the presets, or adjust the settings manually.

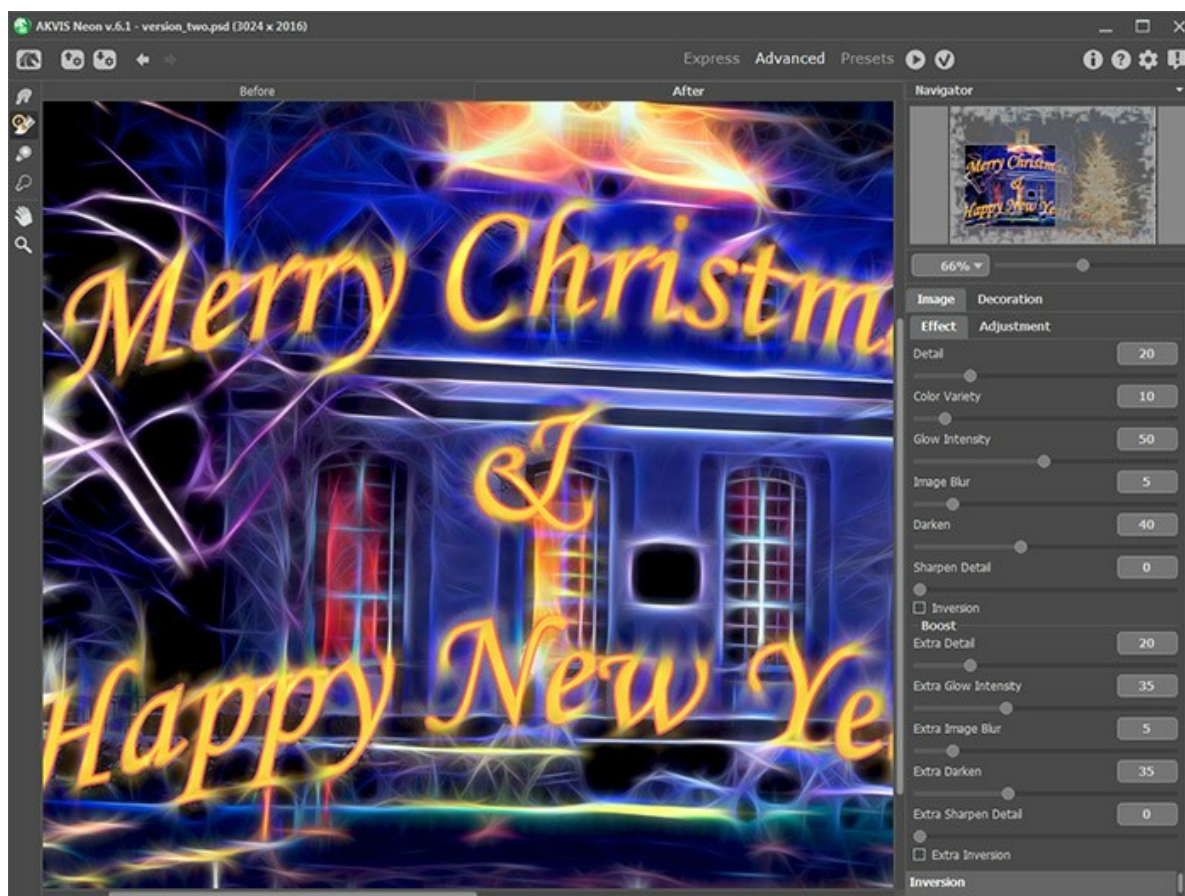


AKVIS Neon Plugin


Press the button  to edit the whole picture.

Step 5. You can use the **History Brush** tool  to weaken the lighting effect.

For example, edit the inscription to make it more readable.



Using History Brush

To apply the result press .

Send warm holiday greetings to your friends and family! They will likely appreciate all the creativity that you put into the heartfelt handmade greeting card.



Christmas & New Year Card
(click to enlarge)

ILLUSION: PSYCHEDELIC PORTRAIT

For this example, we will use a graphic editor and two plug-ins: **AKVIS Draw** and **AKVIS Neon**. First, we have to create a base image drawn with lots of strokes; after that we will transform these strokes into delicate glowing lines.



Original Image



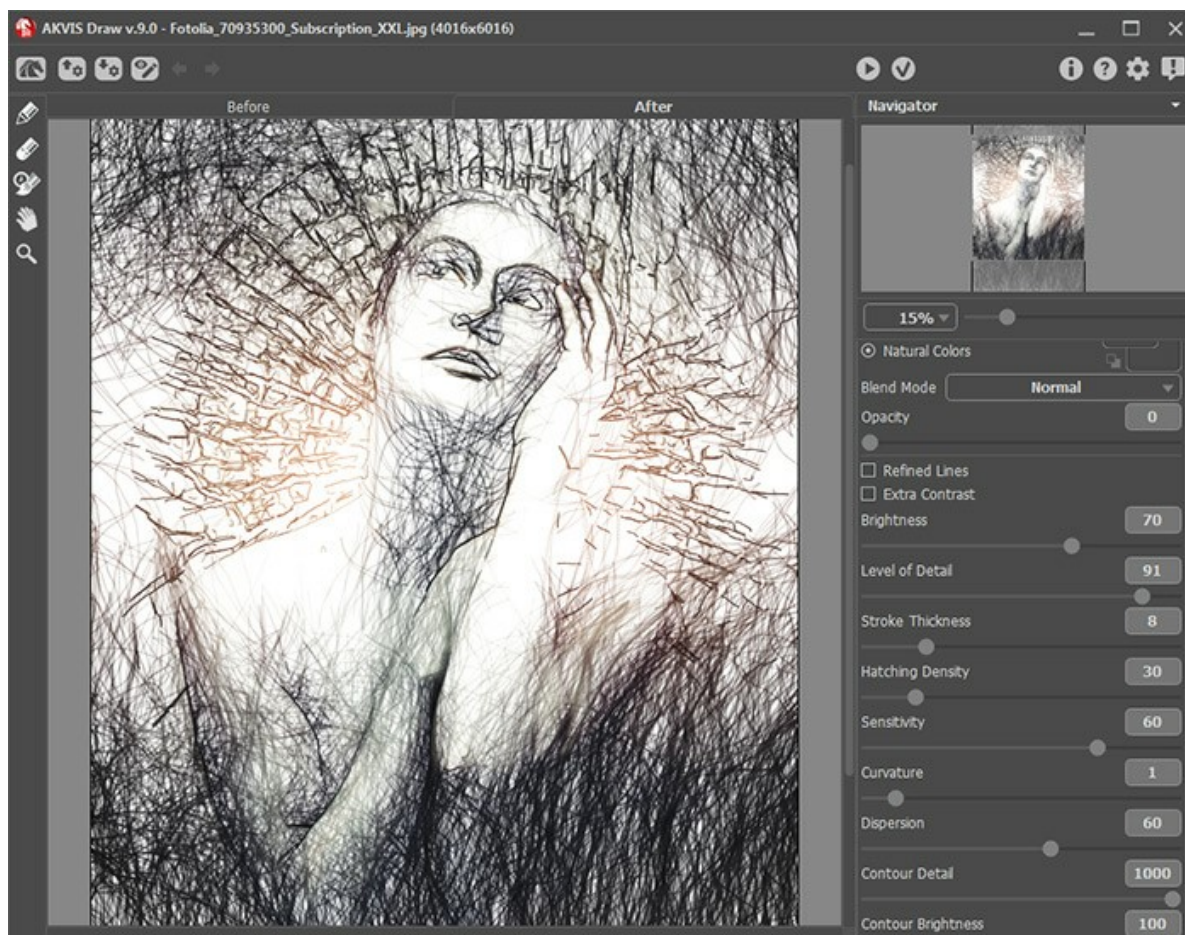
Result

Step 1. Select an image (preferably in dark colors). Open it with your photo editor and create a copy of the layer:




Source Photo

Step 2. Call the **AKVIS Draw** plug-in. Adjust the settings to your own taste. You can also apply a ready-to-use preset with maximum preservation of detail.



Plugin Window of AKVIS Draw

Step 3. Run the processing using the button  and apply the result by pressing .



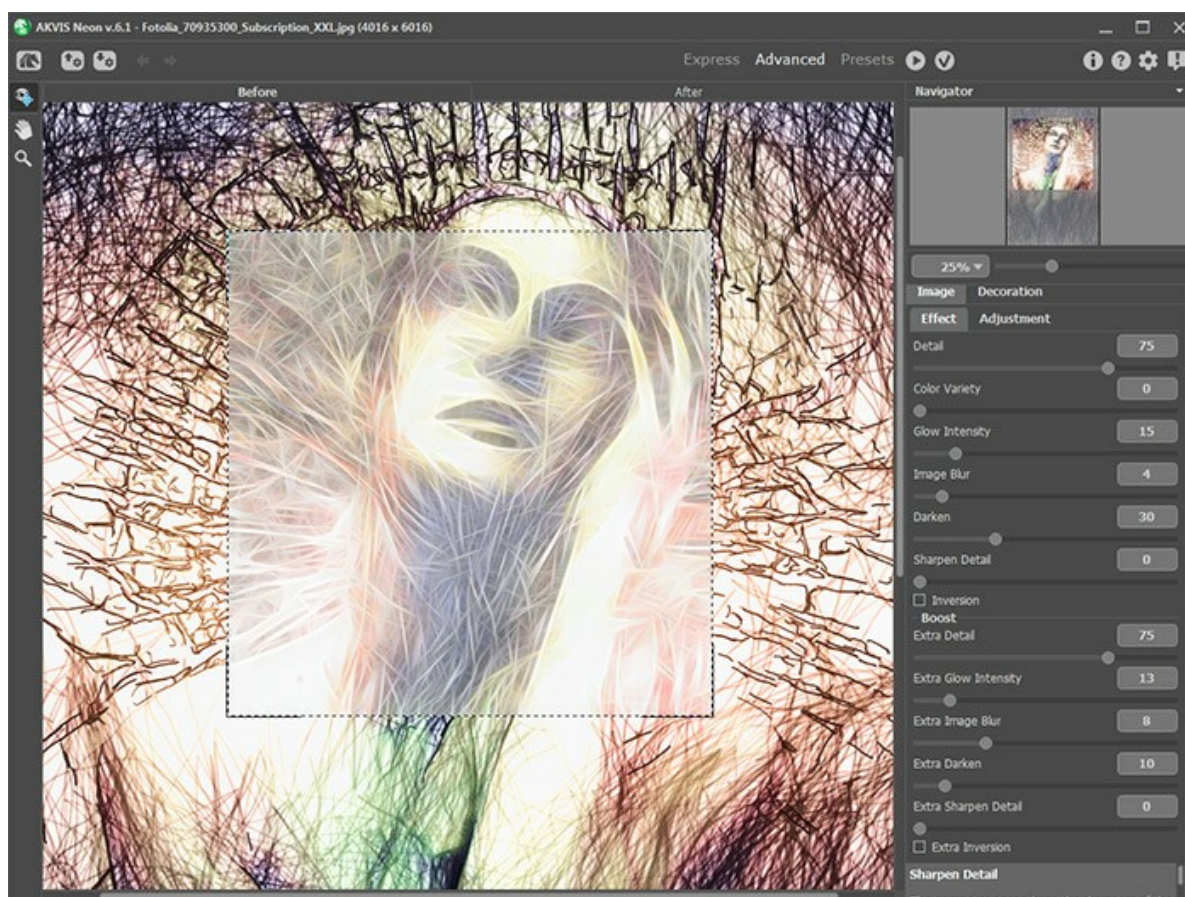
Pencil Drawing

Step 4. Optionally, you can make the picture brighter. For this purpose, use any color correction methods available in your photo editor.



After Processing in AKVIS HDRFactory

Step 5. Call the **AKVIS Neon** plug-in: **Filter -> AKVIS -> Neon**. Use the preview window to select the effect parameters.



Plugin Window of AKVIS Neon

A lot of fine bright lines appear on the image. After processing is complete, apply the result by pressing the button .



After Processing in AKVIS Neon

Step 6. All we need to do now is change the blend mode in the Layers palette. Our expressive psychedelic portrait is finished!



Layers palette



Psychedelic Portrait
(click to enlarge)

MAGICAL DEER

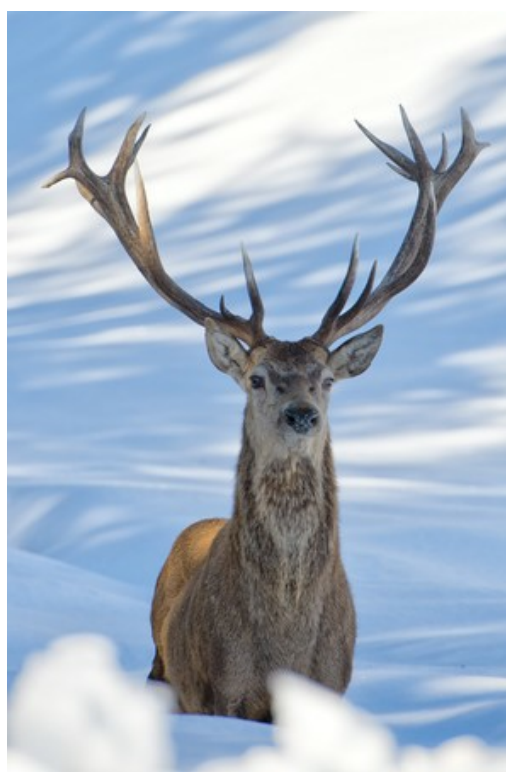
With **AKVIS Neon** you can convert any photo into a bright eye-catching image. This tutorial demonstrates how to strengthen or weaken the glow effect.



Original Image

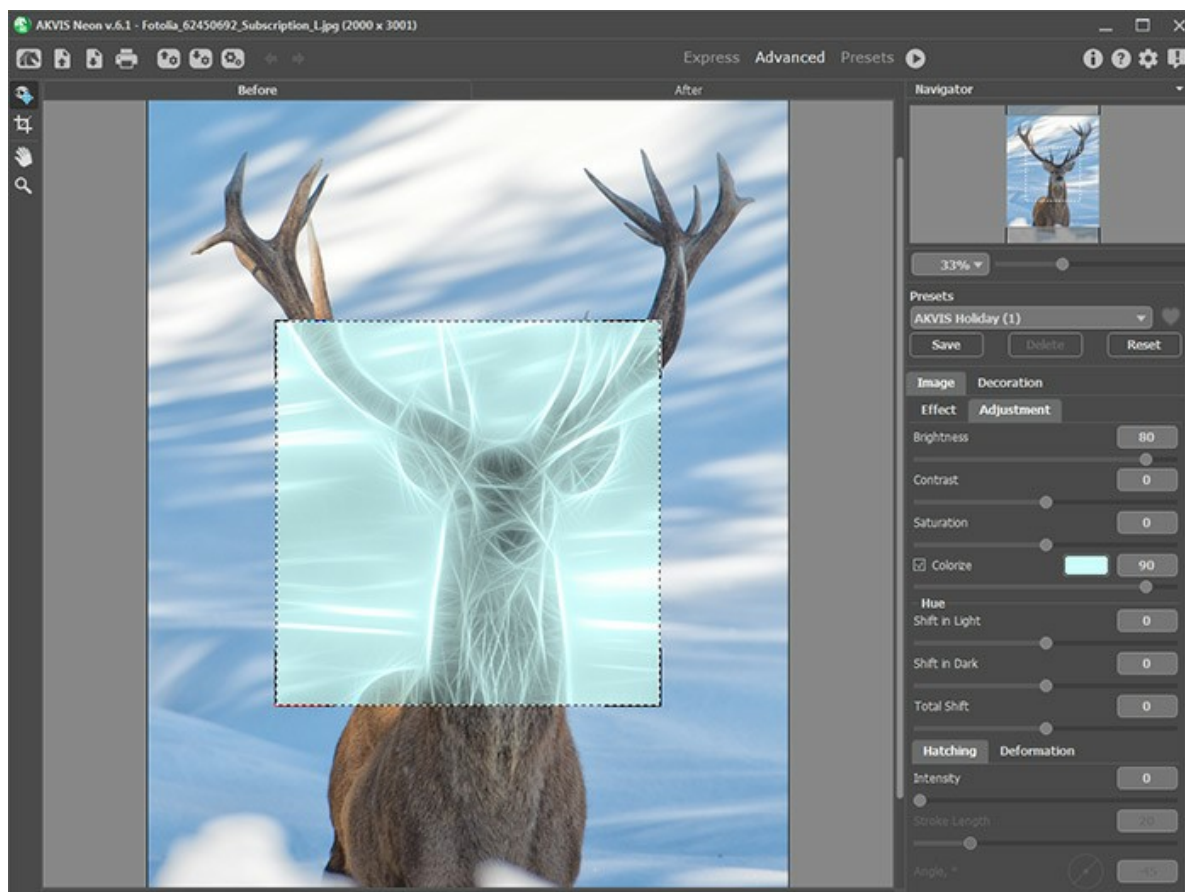
Result

Step 1. Choose an image to apply the effect. We use this picture of a deer:




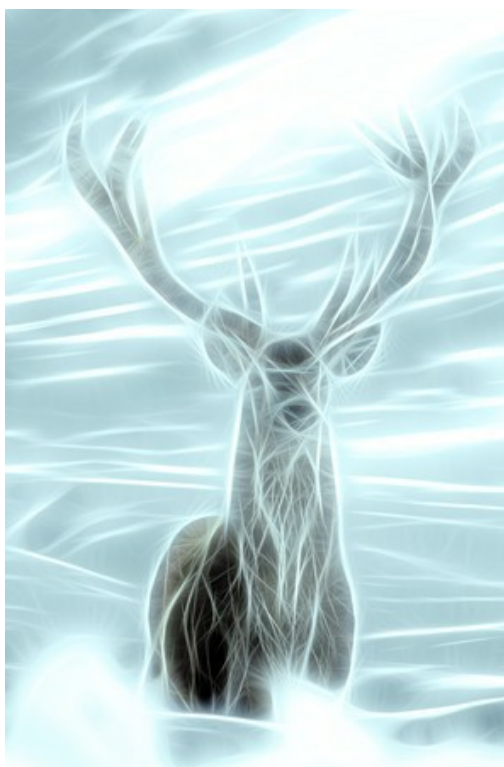
Original Image

Step 2. Adjust the effect parameters. To create a blue glowing background we use the **Colorize** option in the **Adjustment** tab. Note that this option is only available for the [Home Deluxe](#) and [Business](#) licenses.




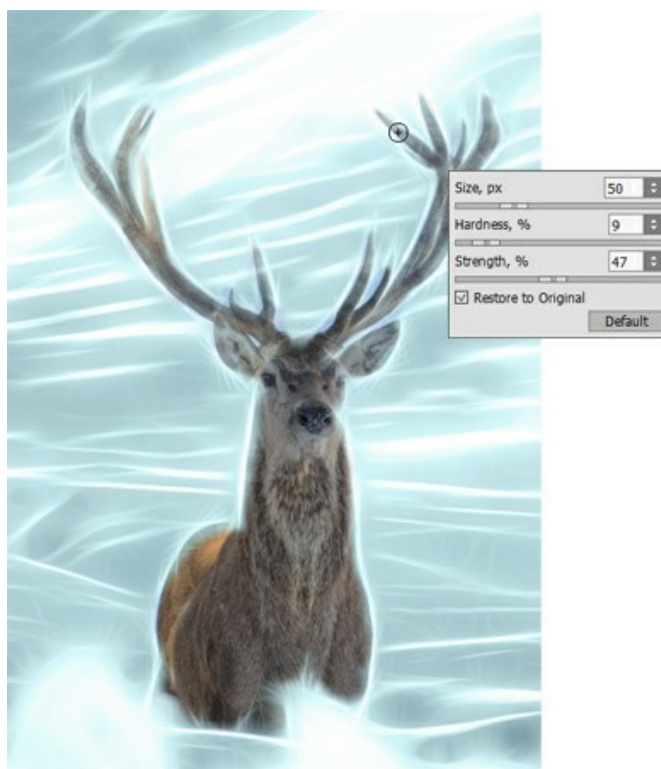
AKVIS Neon

Step 3. Start processing by pressing . The result will look like that:




Blue Glow

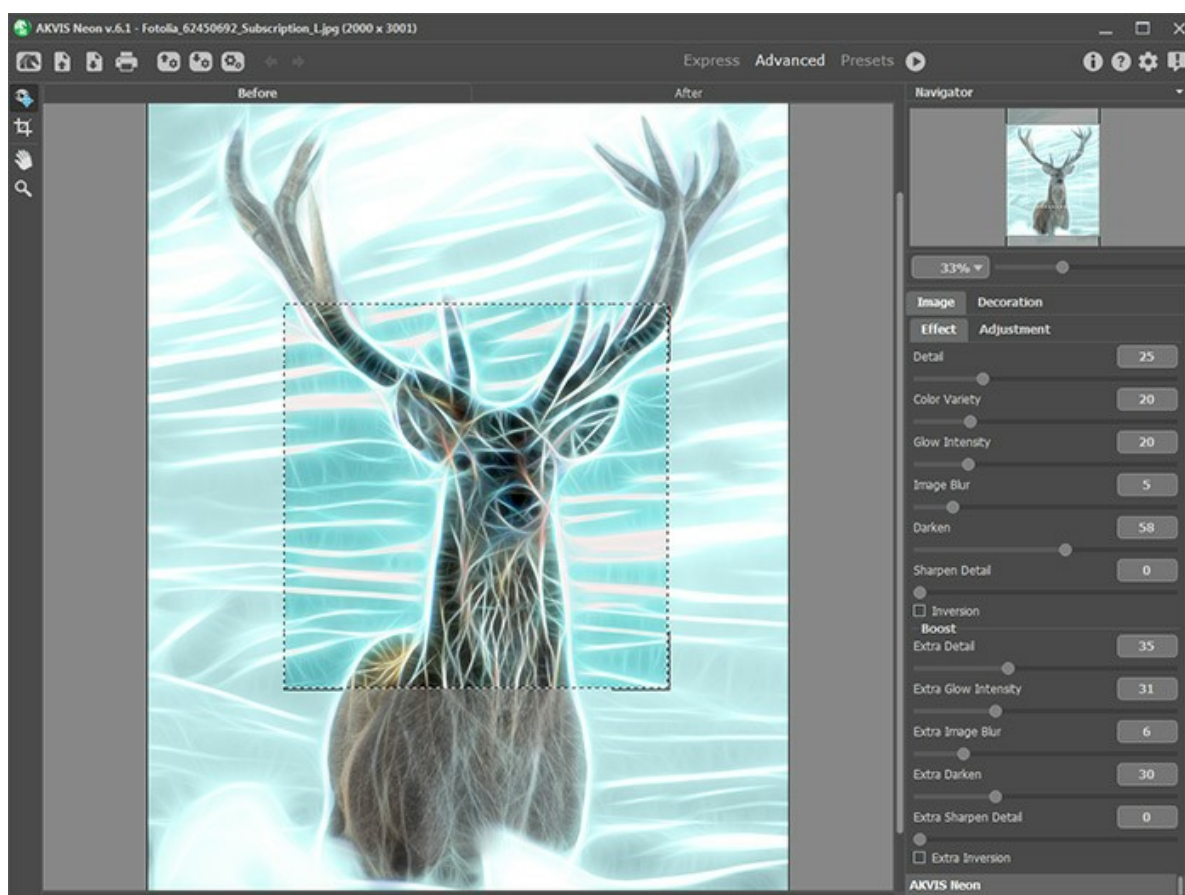
Step 4. Apply the **History Brush**  to weaken the effect on some areas of the image.



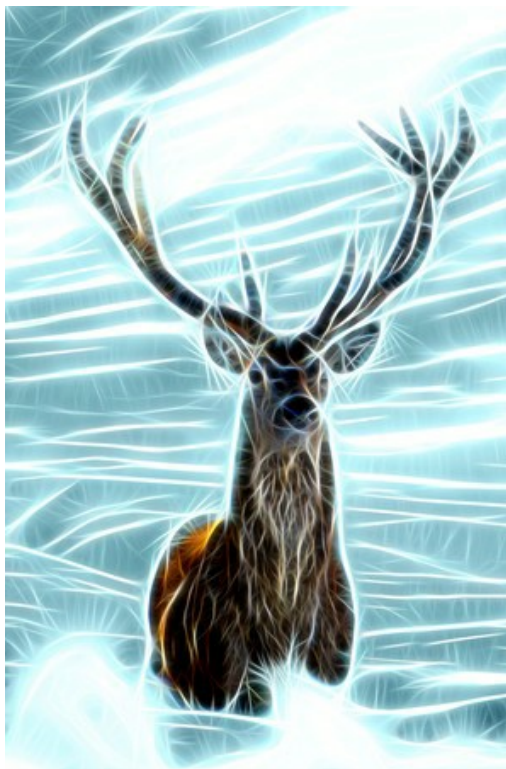
Using History Brush

Step 5. Save the result with .

You can strengthen the glow effect and add some sparkles by processing the image again, this time without colorization.



AKVIS Neon



Magical Deer

AKVIS PROGRAMS

[AKVIS AirBrush — Airbrushing Techniques on Your Photos](#)

AKVIS AirBrush automatically transforms a photograph into a work of art which looks like made with a special airbrush tool that sprays paints or inks. The software works as an artistic filter creating stylish colorful airbrush designs from images using chosen settings of photo-to-painting conversion. [More...](#)



[AKVIS Artifact Remover AI — JPEG-Compressed Image Restoration](#)

AKVIS Artifact Remover AI uses artificial intelligence algorithms to remove JPEG compression artifacts and restore the quality of compressed images. This program provides 4 image enhancement modes, each involves a unique neural network developed especially for this occasion. The software is available free of charge for home users. For commercial use, a Business license is offered. [More...](#)



[AKVIS ArtSuite — Frames and Effects for Your Photos](#)

AKVIS ArtSuite is an impressive collection of versatile frames and effects for photos. ArtSuite contains many templates and texture samples that can be used to create a virtually limitless variety of options for generating frames. Decorate a photo to give it an original and festive look! [More...](#)



AKVIS ArtWork — Collection of Painting & Drawing Techniques

AKVIS ArtWork is photo to painting software designed to imitate different artistic techniques: *Oil Painting*, *Watercolor*, *Gouache*, *Comics*, *Pen & Ink*, *Linocut*, *Stencil*, *Pastel*, and *Pointillism*. ArtWork helps you to create a piece of art out of any picture! [More...](#)



AKVIS Chameleon — Photo Collage Creation

AKVIS Chameleon is a fun to use tool for photo collage creation. It makes the process easy and entertaining. The tool is very easy to handle as it does not require precise selection of objects. Using the software you can quickly create your own photo collages. [More...](#)



AKVIS Charcoal — Charcoal & Chalk Drawings

AKVIS Charcoal is a creative tool for conversion of photos into charcoal and chalk drawings. Using the program you can make professional-looking expressive black and white images. Playing with colors and options you can achieve outstanding artistic effects, such as sanguine and others. [More...](#)



AKVIS Coloriage — Add Color to Black and White Photos

AKVIS Coloriage allows colorizing B&W photos and replacing colors in color images, performing selective colorization and desaturation. It helps to breathe new life into your old family photographs, bring a vintage or artistic appearance to your digital images. [More...](#)



AKVIS Decorator — Resurface and Recolor

AKVIS Decorator lets you change the surface of an object in a realistic manner. The program puts on a texture keeping the volume of an object, following its folds and creases. The new pattern looks absolutely natural and makes you see things differently. Recoloring is also made easy. [More...](#)



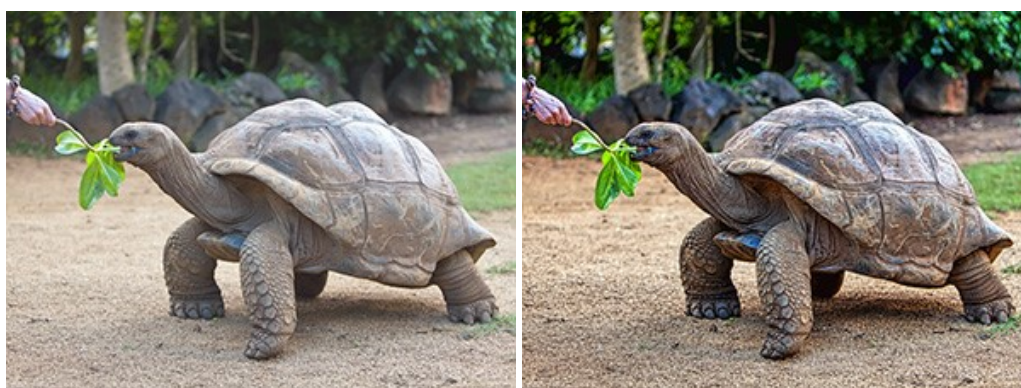
AKVIS Draw — Hand-made Pencil Drawing Effect

AKVIS Draw converts your photos into hand made pencil drawings. The software creates realistic looking line art illustrations, produces both B&W and color drawings. Add a hand-drawn look to your pictures! [More...](#)



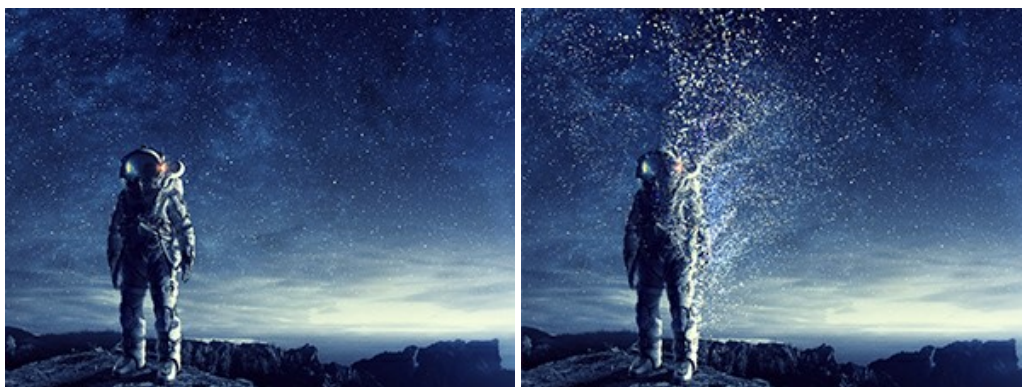
AKVIS Enhancer — Bring Detail To Your Pictures

AKVIS Enhancer is image enhancement software that detects detail in underexposed, overexposed and mid tone areas of a photo with uneven exposure. Enhancer improves every part of the image! The software works in three modes: *Improve Detail*, *Prepress*, and *Tone Correction*. The program offers a fast method to fix a dark photo, add contrast and brightness to a picture, it lets you improve color and adjust tones. [More...](#)



AKVIS Explosion — Fabulous Particle Explosion Effects

AKVIS Explosion offers creative destruction and particle explosion effects for your photos. It bursts an object and applies dust and sand particles to an image. With the software, you can create eye-catching graphics in just a few minutes! [More...](#)



AKVIS Frames — Decorate Your Photos with Frames

AKVIS Frames is a free program designed for working with the [AKVIS frame packs](#)



AKVIS HDRFactory — High Dynamic Range Images: Brighter than Reality!

AKVIS HDRFactory lets you create a High Dynamic Range image from a series of shots or from one single photo. The program can also be used for photo correction. The program brings life and color to your photos! [More...](#)



AKVIS Inspire AI — Artistic Stylization of Images

AKVIS Inspire AI stylizes images using various samples of painting. The AI-based program applies the color scheme and style of a selected artwork to a photo creating a new masterpiece. The software includes a gallery of art styles and allows to load a custom sample. Imitate the style of world famous artists! [More...](#)



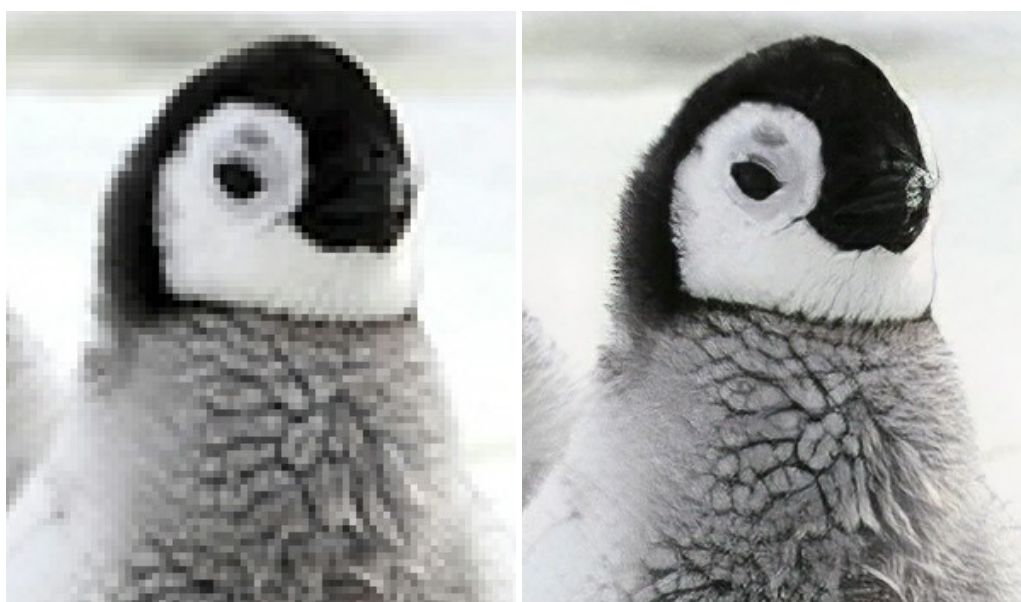
AKVIS LightShop — Light and Star Effects

AKVIS LightShop lets you create an infinite number of astounding light effects! The program offers advanced lighting techniques for adding stars and glow effects to images. A light effect draws attention and brighten up any photo. Add a little magic to your pictures! [More...](#)



AKVIS Magnifier AI — Enlarge Images & Enhance Quality

AKVIS Magnifier AI allows you to increase the size of photos and improve image quality and appearance. Featuring neural network-based algorithms, Magnifier AI upscales images to super-high resolution, up to 800%, and produces wall-sized prints. Improve image resolution, create clear, detailed images with perfect quality! [More...](#)



AKVIS MakeUp — Retouch Your Portrait Photos!

AKVIS MakeUp improves your portraits giving them a professional look. The software retouches facial imperfections making your skin radiant, beautiful, pure and even. The program adds glamour to your pictures and creates a high key effect. Look your best in every photo with AKVIS MakeUp! [More...](#)



AKVIS NatureArt — Bring Nature to Your Photos

AKVIS NatureArt is an excellent tool for imitating the magnificence of natural phenomena on your photos. The program includes a number of effects: [Rain](#)



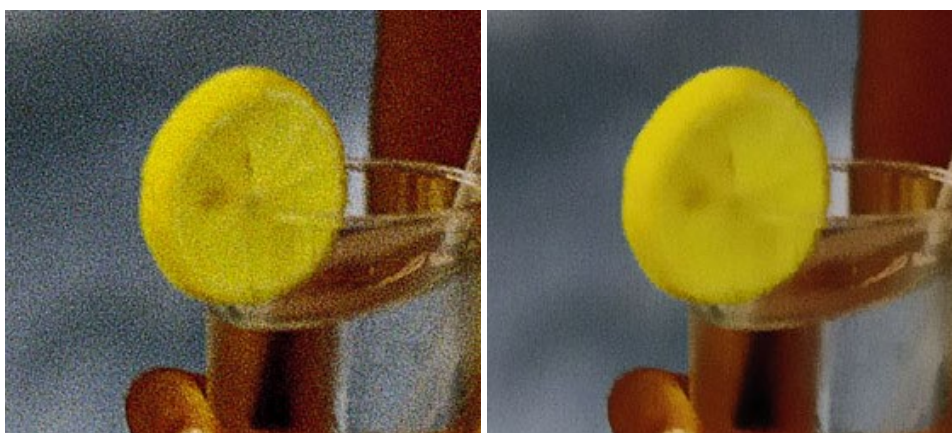
AKVIS Neon — Glowing Drawings from Photos

AKVIS Neon lets you create amazing glowing lines effects. The software transforms a photo into a neon image that looks like drawn with luminescent ink. [More...](#)



AKVIS Noise Buster AI — Digital Noise Reduction

AKVIS Noise Buster AI is software for noise suppression on digital and scanned images. The program is efficient for removing any type of digital noise. It reduces both luminance and color noise without spoiling other aspects of photos. The software includes AI technologies and adjustments for manual refining. [More...](#)



AKVIS OilPaint — Oil Painting Effect

AKVIS OilPaint turns your photos into oil paintings. The mysterious production of a painting happens right before your eyes. The unique algorithm authentically reproduces the technique of the real brush. With this cutting-edge software you can become a painter! [More...](#)



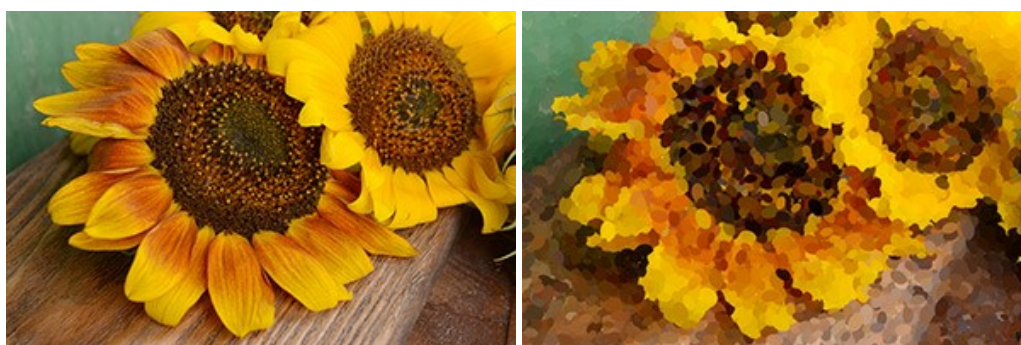
AKVIS Pastel — Turn Photos into Pastel Paintings

AKVIS Pastel turns your photos into pastel paintings. The program converts your photo into a lifelike digital art imitating one of the most popular artistic techniques. AKVIS Pastel is a powerful tool to unleash your creativity! [More...](#)



[AKVIS Points — Apply Pointillism Effect to Your Photos](#)

AKVIS Points lets you transform your photos into paintings using one of the most exciting artistic techniques - pointillism. With the software you can easily create gorgeous works of art in a pointillist manner. Discover the world of bright colors! [More...](#)



[AKVIS Refocus AI — Focus Improvement & Blur Effects](#)

AKVIS Refocus AI improves the sharpness of out-of-focus and blurry photos, enhances the entire image or partially, creating a selectively focused area. It's also possible to add bokeh and lens blur effects to your photos. The program provides five image processing modes: *Refocus AI*, *Tilt-Shift*, *Iris Blur*, *Motion Blur*, and *Radial Blur*. [More...](#)



[AKVIS Retoucher — Image Restoration Software](#)

AKVIS Retoucher is an efficient program for photo restoration and photo retouching. The software removes dust, scratches, stains, and other defects that appear on damaged photos. It intelligently reconstructs the missing parts of the photo using the information of the surrounding areas. [More...](#)



[AKVIS Sketch — Turn Your Photos into Pencil Sketches](#)

AKVIS Sketch converts photos into amazing pencil drawings. The software creates realistic color artworks and B&W sketches, imitating the technique of graphite and color pencil. The program offers these photo to drawing conversion styles: *Classic*, *Artistic*, *Maestro*, and *Multistyle*, - each with a series of presets. AKVIS Sketch allows you to feel like a real artist! [More...](#)



[AKVIS SmartMask — Save Time on Complex Selections!](#)

AKVIS SmartMask is an efficient selection tool that saves time and is fun to use. Selection has never been so simple! The software considerably increases your productivity. You will be freed from boring work and will have more room for creativity and realization of your ideas. [More...](#)



AKVIS Watercolor — Aquarelle Art from Photos

AKVIS Watercolor easily makes a photo look like a brilliant and vibrant watercolor painting. The program includes two styles of photo to painting conversion: *Classic Watercolor* and *Contour Watercolor*; each comes with a wide range of ready-to-use presets. The software turns ordinary images into aquarelle pieces of art. [More...](#)

