



MakeUp

Portrait Retouching Software



akvis.com

CONTENTS

- Field of Application
- Installation on Windows
- Installation on Mac
- Installation on Linux
- Activation
- How It Works
 - ◊ Workspace
 - ◊ Using the Program
 - ◊ Smoothing
 - ◊ Correction
 - ◊ Effects
 - ◊ Retouching Tools
 - ◊ Batch Processing
 - ◊ Presets
 - ◊ Preferences
 - ◊ Print Image
- Examples
 - ◊ High Key Portrait
 - ◊ Improving Skin Tone
- AKVIS Programs

AKVIS MAKEUP 8.0 | RETOUCH YOUR PORTRAIT PHOTOS!

AKVIS MakeUp improves portraits and adds glamour to photos, giving them a professional look.

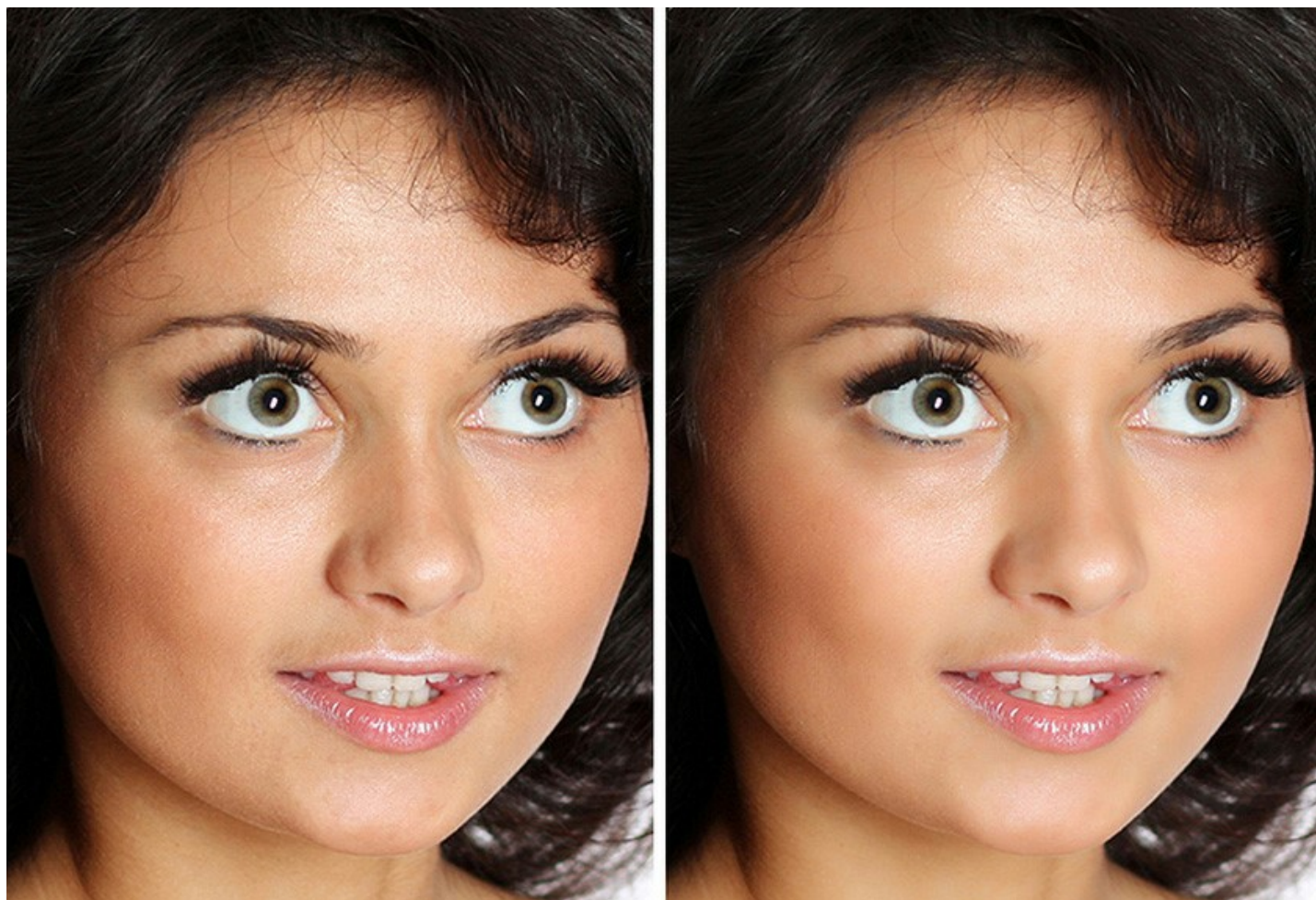
The software lets you retouching small defects on a skin, making it radiant, beautiful, pure and even, as you can see on artistic images. It is amazing how much a good complexion adds to rejuvenating and freshening up a [look!](#)



Stylish, glamorous photographs have become the hallmark of the fashion industry. But not everyone knows that before a photo hits the pages of a magazine, it is subjected to thorough [processing](#).

These tricks of professional photographers are now available to everyone!

Just open a portrait with **AKVIS MakeUp** and click on the *Run* button. The program will smooth, brighten, and freshen up the skin without changing other aspects of the photo.



There are two modes – **Express** and **Advanced**. In *Express* mode, you can do the correction with a single click using the default settings, while in *Advanced* mode, you can choose the tone of the skin more precisely using the eyedropper tool and play with more parameters to find the golden mean between glamour and authenticity.

Additionally to the automatic skin smoothing method, the program also offers some [retouching tools](#) like: **Spot Remover**, **Teeth Whitening**, **Red Eye Removal**, and others.



You can also achieve some special effects, for example make a [B&W portrait](#) or a [High Key lighting](#) effect which blows out harsh shadows and thus removes small imperfections and the shadows under the eyes. The facial features become well-defined and the portrait appears in the best light.



AKVIS MakeUp can be useful to the fans of social networks and blogs to improve their profile pictures and **add a touch of glamour to the albums**. The software is ideal for processing **marriage photographs** or **graduation party photos**. On such special occasions people try to achieve a perfect result – flawless portraits of the main participants.

Thanks to the **Batch Processing** feature, you won't need to process every single picture, but just apply the chosen settings to the whole [folder with the event shooting](#).

AKVIS MakeUp is available [in two versions](#) – as a *standalone* application and as a *plugin* filter.

The plugin version is compatible with [AliveColors](#), Adobe Photoshop, Photoshop Elements, Corel PaintShop Pro, etc. Refer to [Check the compatibility](#) page for more details.

INSTALLATION ON WINDOWS

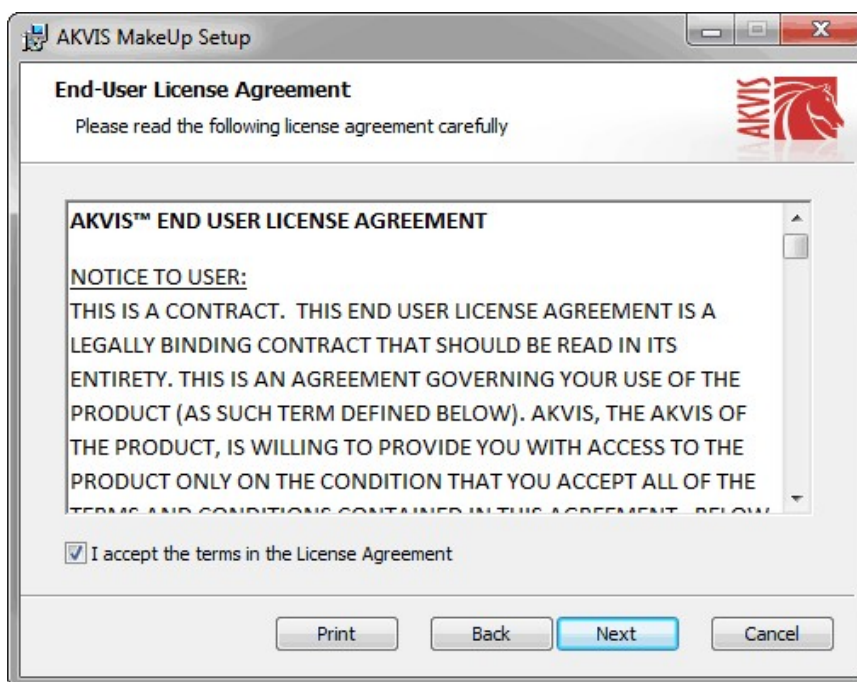
Please find instructions below on how to install the AKVIS programs on Windows.

You must have administrator rights to install the program on your computer.

Before installing the AKVIS plugins, please make sure that the image editor where you want to install the plugins, is closed. Or re-run the image editor after the installation of the plugin.

1. Run the setup **exe** file.
2. Select your language and press the **Install** button.
3. To continue the installation process you have to read and accept the **End User License Agreement**.

Activate the check box **"I accept the terms in the License Agreement"**, and press **Next**.

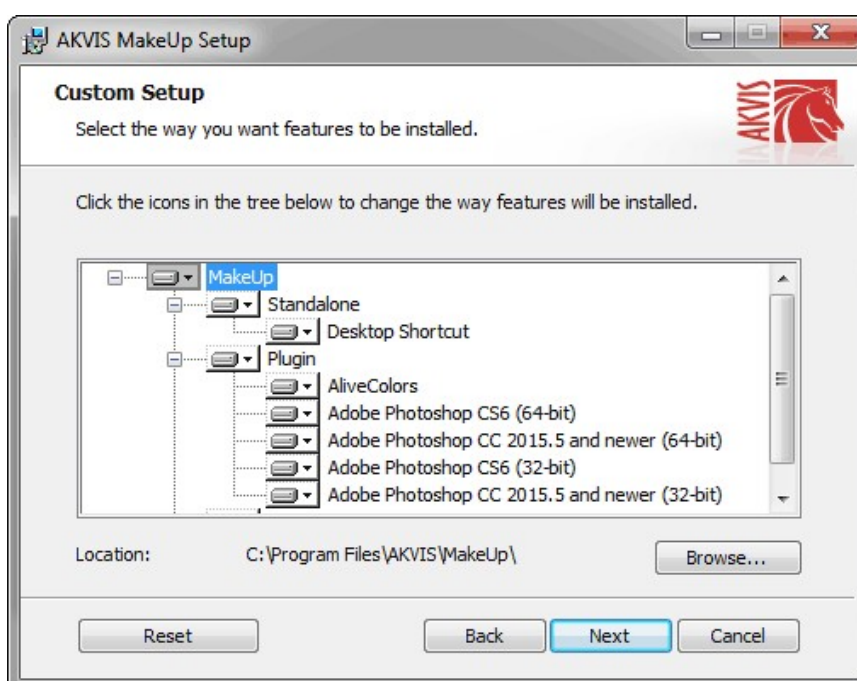


4. To install the **Plugin**, select your photo editor(s) from the list.

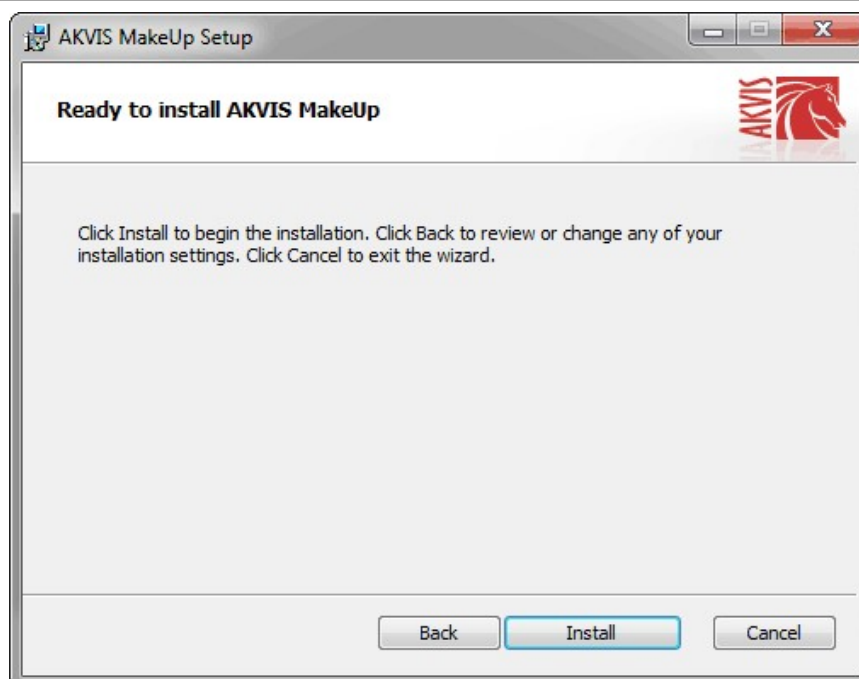
To install the **Standalone** version, make sure that the corresponding option is activated.

To create a shortcut for the program on desktop, activate **Desktop Shortcut**.

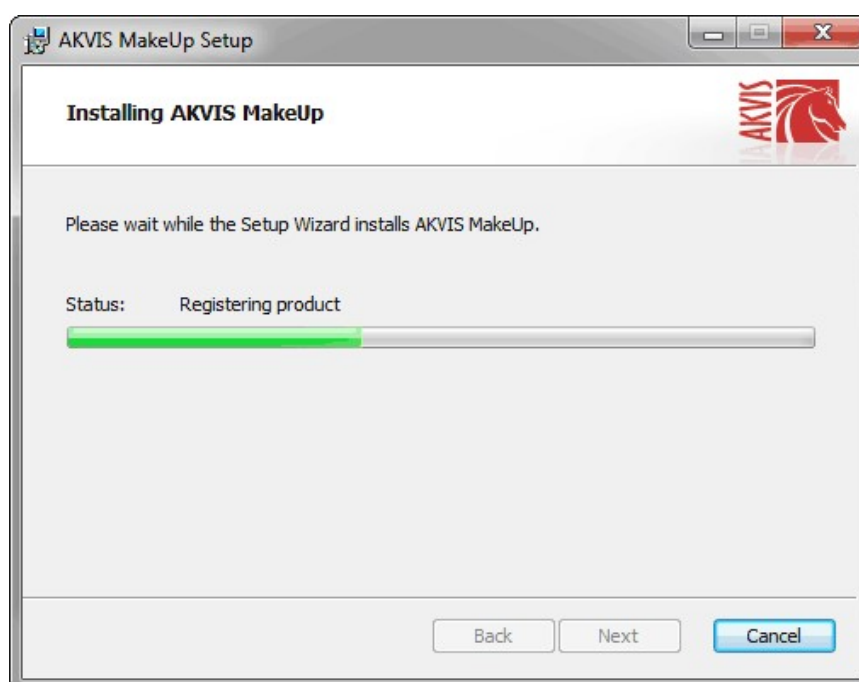
Press **Next**.



5. Press the **Install** button.

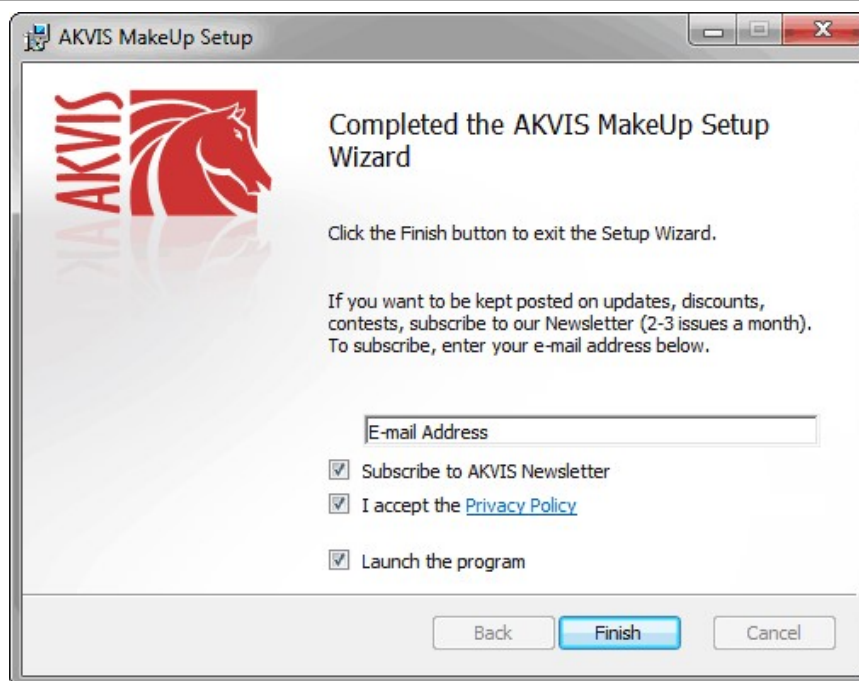


6. The installation is in progress.



7. The installation is completed.

You can subscribe to the **AKVIS Newsletter** to be informed about updates, events, and special offers. Enter your e-mail address and confirm that you accept the Privacy Policy.



8. Press **Finish**.

After installation of the **standalone** version, you will see the program name in the **Start** menu and a shortcut on the desktop, if during installation the corresponding option was enabled.

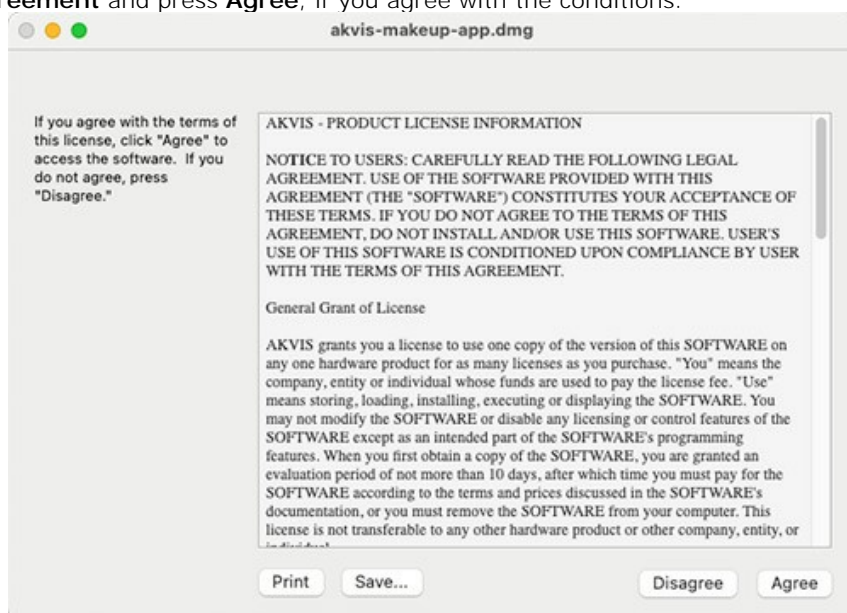
After installation of the **plugin**, you will see a new item in the **Filter/Effects** menu of your photo editor. For example in **Photoshop**: **Filter -> AKVIS -> Makeup**, in **AliveColors**: **Effects -> AKVIS -> Makeup**.

INSTALLATION ON MAC

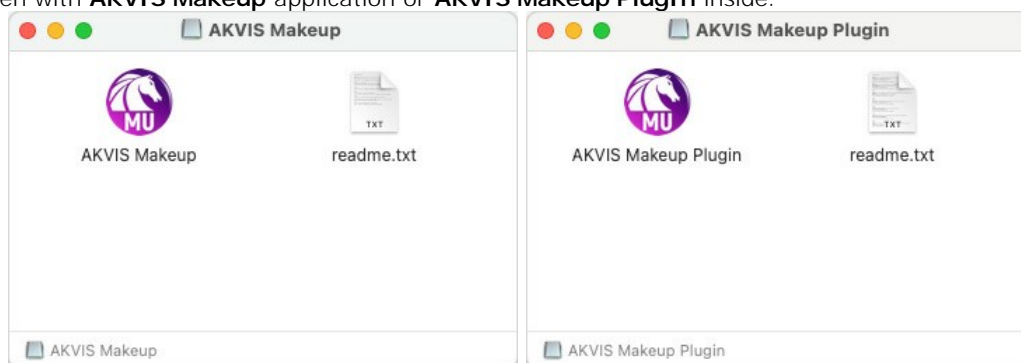
Follow the instructions to install the AKVIS software on a Mac computer.

You must have administrator rights to install the program on your computer.

1. Open the **dmg** file:
 - **akvis-makeup-app.dmg** to install the **Standalone** version
 - **akvis-makeup-plugin.dmg** to install the **Plugin** into your image editor.
2. Read the **License Agreement** and press **Agree**, if you agree with the conditions.



3. **Finder** will open with **AKVIS Makeup** application or **AKVIS Makeup PlugIn** inside.



4. To install the **Standalone** version, drag the **AKVIS Makeup** app into the folder **Applications** (or any other place you like).

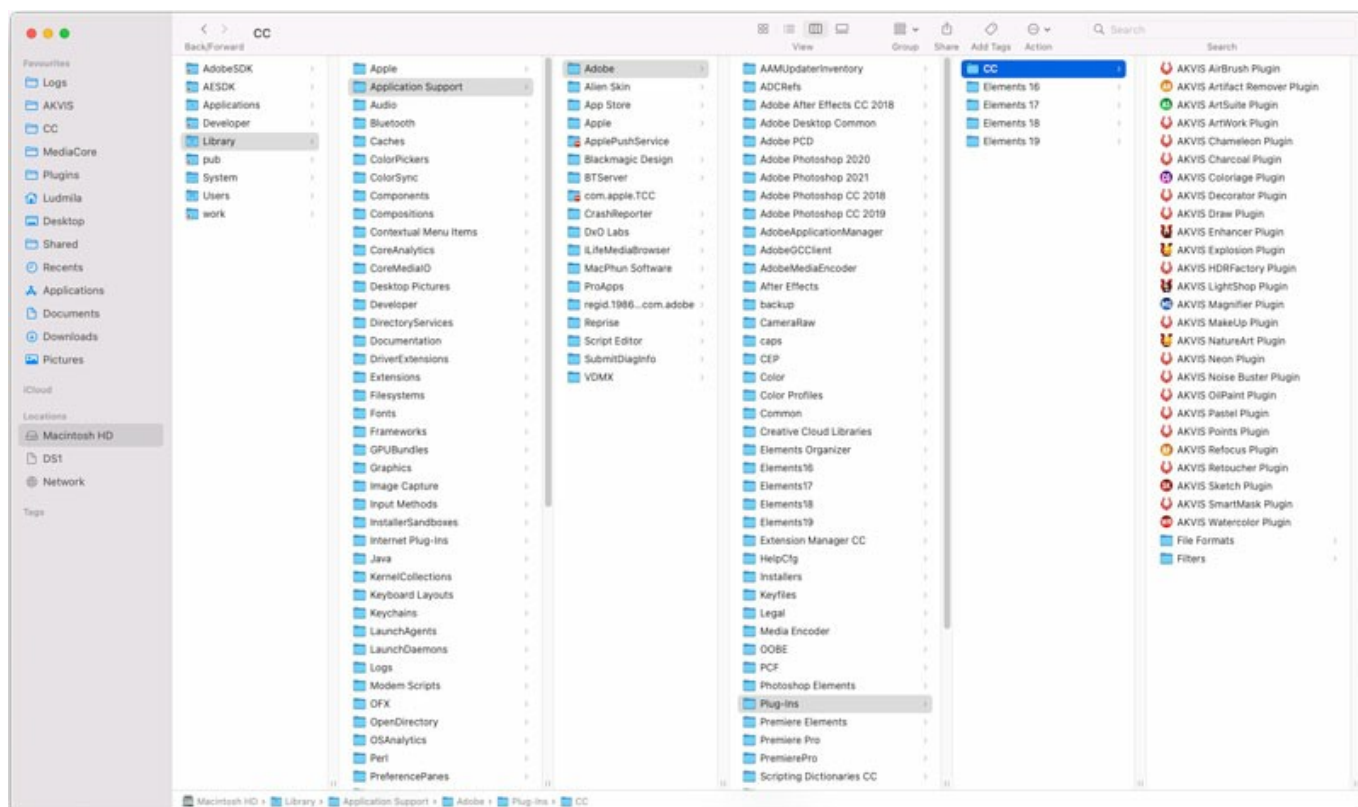
To install the **Plugin**, drag the entire **AKVIS Makeup PlugIn** folder into the **Plug-Ins** folder of your graphic editor:

AliveColors: You can choose in the **Preferences** the folder of the plugins.

Photoshop CC 2023, CC 2022, CC 2021, CC 2020, CC 2019, CC 2018, CC 2017, CC 2015.5:
Library/Application Support/Adobe/Plug-Ins/CC;

Photoshop CC 2015: Applications/Adobe Photoshop CC 2015/Plug-ins;

Photoshop CS6: Applications/Adobe Photoshop CS6/Plug-ins.



AKVIS Plugins on Mac
(click to enlarge)

After installation of the **plugin**, you will see a new item in the filters/effects menu of your photo editor. Select in **Photoshop**: **Filter -> AKVIS -> Makeup**, in **AliveColors**: **Effects -> AKVIS -> Makeup**.

Run the **standalone** application by double-clicking on its icon in **Finder**.

You can also run the AKVIS programs from the **Photos** app by choosing the **Image -> Edit With** command (in High Sierra and later versions of macOS).

INSTALLATION ON LINUX

Follow the instructions to install the AKVIS software on a Linux computer.

Note: The AKVIS programs are compatible with **Linux kernel 5.0+ 64-bit**. You can find out the kernel version using the **uname -srm** command.

Installation on **Debian**-based systems:

Note: You need apt-install or apt-get permissions required to install software.

1. Run the terminal.
2. Create a directory to store keys:
sudo mkdir -p /usr/share/keyrings
3. Download the key that signed the repository:
curl -fsSL https://akvis.com/akvis.gpg | sudo tee /usr/share/keyrings/akvis.gpg >/dev/null
or **wget -O - https://akvis.com/akvis.gpg | sudo tee /usr/share/keyrings/akvis.gpg >/dev/null**
4. Add the repository to the list where the system looks for packages to install:
echo 'deb [arch=i386 signed-by=/usr/share/keyrings/akvis.gpg] https://akvis-deb.sfo2.cdn.digitaloceanspaces.com akvis non-free' | sudo tee /etc/apt/sources.list.d/akvis.list
5. Update the list of known packages:
sudo apt-get update
6. Install AKVIS Makeup
sudo apt-get install akvis-makeup
7. The installation is completed.

Launch the program via the terminal or using the program shortcut.

8. For automatic updates, use the command:
sudo apt-get upgrade

To remove the program:

sudo apt-get remove akvis-makeup --autoremove

Installation on **RPM**-based systems (CentOS, RHEL, Fedora):

1. Run the terminal.
2. Register the key that signed the repository:
sudo rpm --import https://akvis.com/akvis.asc
3. Add the repository to the system:
sudo wget -O /etc/yum.repos.d/akvis.repo https://akvis.com/akvis.repo
4. Update the package list:

when using the **dnf** package manager:
sudo dnf update

when using the **yum** package manager:
sudo yum update

5. Install AKVIS Makeup:

when using the **dnf** package manager:
sudo dnf install akvis-makeup

when using the **yum** package manager:
sudo yum install akvis-makeup

6. The installation is completed.

Launch the program via the terminal or using the program shortcut.

7. For automatic updates:

when using the **dnf** package manager:
sudo dnf upgrade

when using the **yum** package manager:
sudo yum upgrade

8. To remove the program:

when using the **dnf** package manager:
sudo dnf remove akvis-makeup

when using the **yum** package manager:
sudo yum remove akvis-makeup

Installation on **openSUSE**.

1. Run the terminal.
2. Login as a root user.
3. Add the key that signed the repository:
rpm --import http://akvis.com/akvis.asc
4. Add the repository to the system:
zypper ar -r https://akvis.com/akvis.repo akvis
5. Update the package list:
zypper ref
6. Install AKVIS Makeup:
zypper install akvis-makeup
7. The installation is completed.

Launch the program via the terminal or using the program shortcut.

8. For automatic updates:
zypper update

To remove the program:

zypper remove akvis-makeup

In order to display the program interface correctly, it is recommended to install the Compton or Picom composite manager.


AKVIS SOFTWARE ACTIVATION

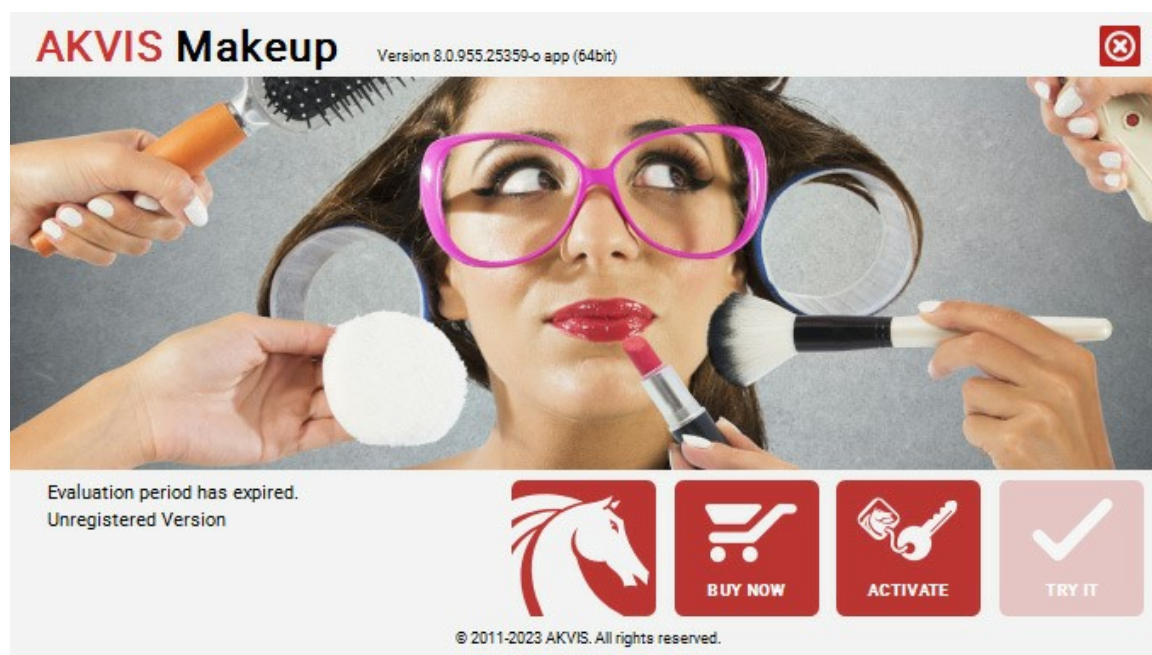
Attention! During the activation process your computer must be connected to Internet.

If it is not possible, we offer you an alternative way ([see below for Offline Activation](#)).

Download [AKVIS Makeup](#) and install the program. [Read the Installation Instruction here](#).

When you run the unregistered version, a splash window will appear displaying general information about the version and the number of days left in your trial period.

You can also open the **About the Program** window by pressing the button  in the program's Control Panel.



Click on **TRY IT** to evaluate the software. A new window will appear with variants of licenses to test.

You do not need to register the trial version to try all features of the software. Just use the program during the evaluation time (10 days after the 1st start).

During the test period you can try all options and choose the license you like. Select one of the offered functionality types: **Home** (Plugin or Standalone), **Home Deluxe**, or **Business**. Your choice of license will affect which features will be available in the program. [Consult the comparison table](#) for more details about license types and versions of the software.

If the trial period has expired, the **TRY IT** button is disabled.

Click on **BUY NOW** to choose a license to order.

When the payment is effected, your serial number for the program will be sent to you within minutes.

Click on **ACTIVATE** to start the activation process.

Enter your name (the program will be registered to this name).

Enter your serial number (your license key).

Choose the method of activation — either direct connection to the activation server or by e-mail.

Direct connection:

We recommend activating the program using direct connection, as it is the easiest way.

At this step your computer must be connected to Internet.

Press **ACTIVATE**.

Your registration is completed!

Request by e-mail:

In case you have chosen activation by e-mail, a message with all necessary information will be created by the program.

NOTE: You can also use this method for **Offline Activation**:

If your computer is not connected to Internet, transfer the activation message to a computer connected to Internet, for example, with a USB stick. Send us this information to: activate@akvis.com.

Please do not send the screenshot! Just copy the text and save it.

We need your serial number for the software, your name, and HardwareID (HWID) of your computer.

We will generate your license file (**Makeup.lic**) using this information and will send it to your e-mail address.

Save the **.lic** file (do not open it!) to your computer where you want to register the software, in the **AKVIS** folder in Users' Shared (Public) Documents:

♦ Windows:

C:\Users\Public\Documents\AKVIS

(This PC > Local Disk (C:) > Users > Public > Documents > AKVIS)

♦ Mac:

/Users/Shared/AKVIS

Open the **Finder**, select the **Go** menu, then select **Go to Folder...** (**⌘**+**Shift**+**G**), type **"/Users/Shared/AKVIS"**, and click **Go**.

♦ Linux:

/var/lib/AKVIS

Your registration is completed!



When the program is registered, **BUY NOW** turns to **UPGRADE** that lets you improve your license (for example, change **Home** to **Home Deluxe** or **Business**).

WORKSPACE

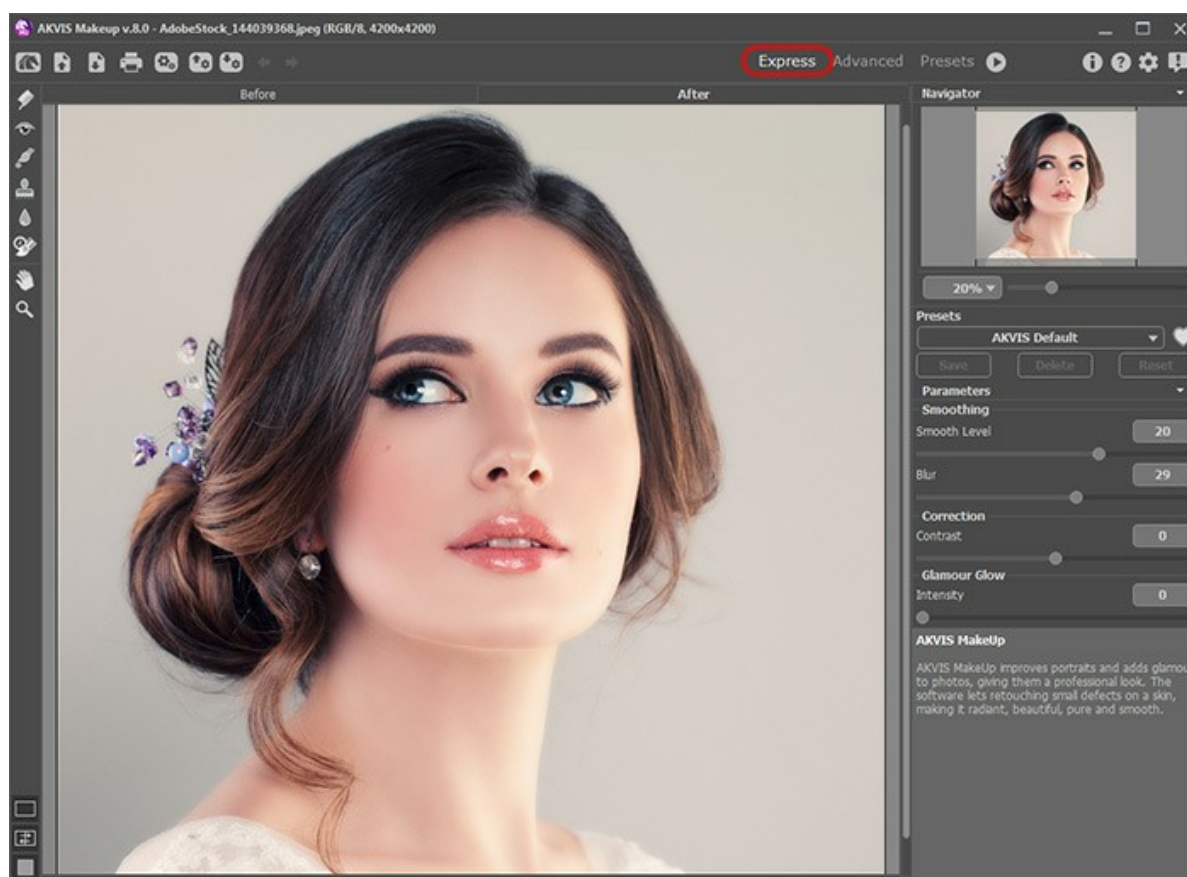
AKVIS MakeUp can work independently as a *standalone program* as well as a *plugin* to a photo editor.

Standalone is an independent program. You can run it in the usual way.

Plugin is an add-on for a [photo editor](#), for example for Photoshop. To call the plugin, select **AKVIS → MakeUp** from filters of your image editing program.

The workspace will be arranged according to the interface mode chosen in the Control Panel: **Express**, **Advanced**, or **Presets**.

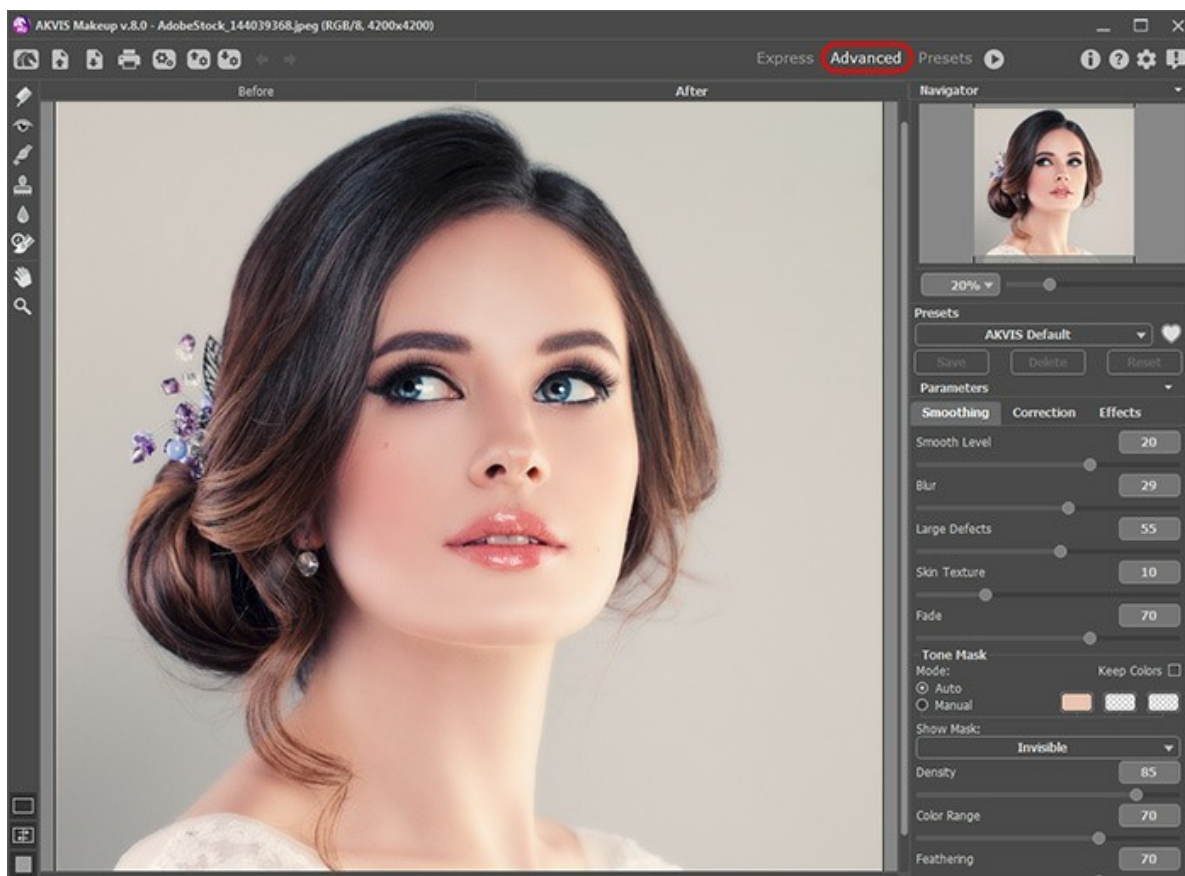
The first time you run the program, it is displayed in **Express** mode, with a simplified interface and a minimal set of sliders, which help to quickly obtain a satisfactory result.



Workspace of AKVIS MakeUp (Express)

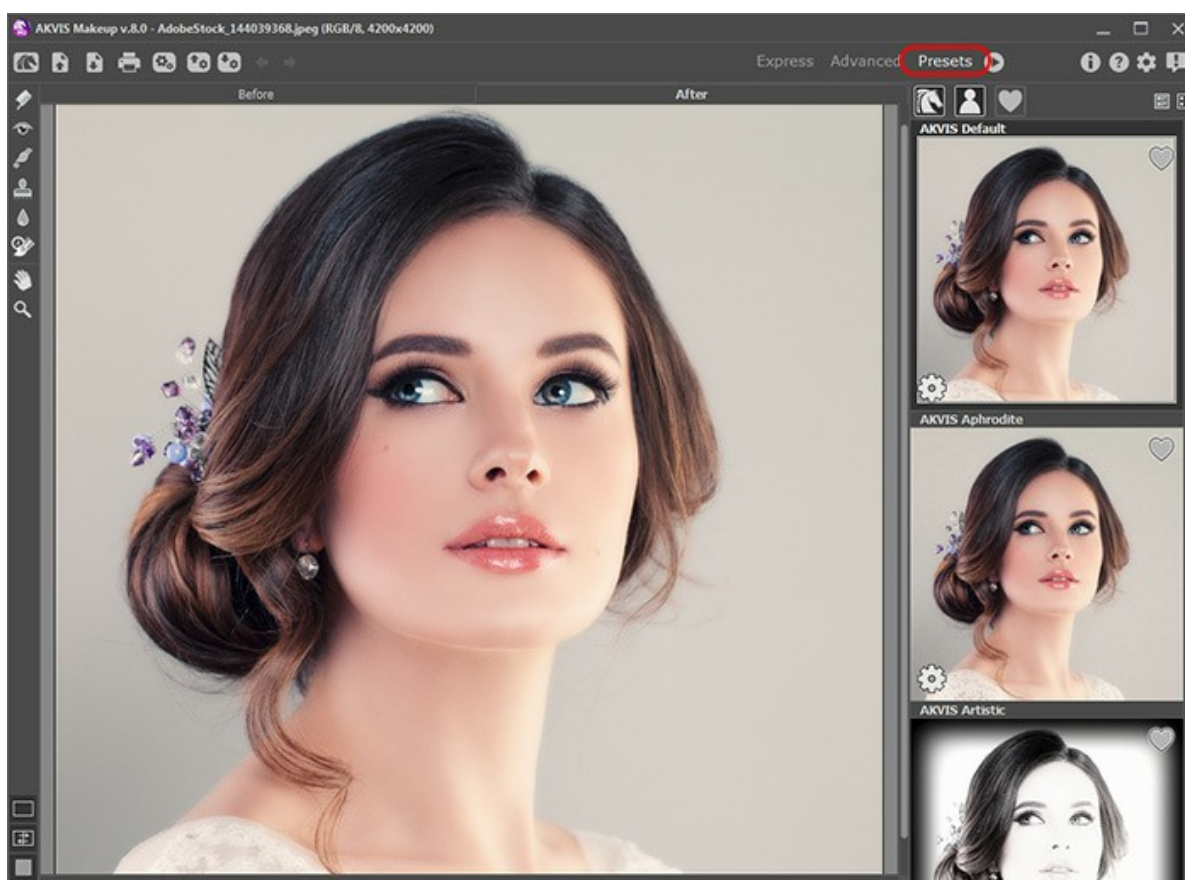
Experienced users who are familiar with the capabilities of **AKVIS MakeUp** can switch to **Advanced** mode: the interface's appearance will change, granting access to the full functionality of the program.

Note: All features and parameters work in **Express** mode as well; some are hidden and the program uses values of a chosen preset.



Workspace of AKVIS MakeUp (Advanced)

The **Presets** button in the top panel allows you to switch to the visual display mode of presets ([Presets Gallery](#)).



Workspace of AKVIS MakeUp (Presets Gallery)


The left part of the program's window is taken by the **Image Window** with two tabs - **Before** and **After**. The **Before** tab shows the original image, the **After** tab shows the result. To switch between the tabs and compare the original and the resulting images, just left-click on any point of the image.


Keep in mind that once the **After** tab is pressed, the entire image will be processed automatically.

You can select how **Image Window** and **Before/After** tabs will be shown by adjusting the **View Modes** in the bottom part of the left panel.





In the upper part of the program's window you can see the **Control Panel** with the following buttons:


The button  opens the home page of **AKVIS MakeUp**.

The button  (only in the standalone version) opens an image for processing. Right mouse click on this button displays the list of recent files. You can [change the number of recent documents](#) in the **Preferences** dialog box.


The hot-keys are **Ctrl+O** on Windows, **⌘+O** on Mac.


The button  (only in the standalone version) saves image to the disk. The hot-keys are **Ctrl+S** on Windows, **⌘+S** on Mac.

The button  (only in the standalone version) prints the image. The hot-keys are **Ctrl+P** on Windows, **⌘+P** on Mac.


The button  (only in the standalone version) opens the **Batch Processing** dialog to [automatically process a series of images](#).


The button  [imports a list of user presets](#) (from the **.makeup** file).

The button  [exports user presets](#). You can save any presets to a **.makeup** file.

The button  cancels the last operation made with the tools. It is possible to cancel several operations in a row.

The hotkeys are **Ctrl+Z**, on Windows, **⌘+Z** on Mac.

The button  returns the last cancelled operation. It is possible to return several operations in a row. The hotkeys are **Ctrl+Y** on Windows, **⌘+Y** on Mac.


The button  starts image processing. The result is shown in the **After** tab.

The button  (only in the plugin version) applies the result to the image and closes the plugin.

The button  calls information about the program.


The button  calls the **Help** files. The hot-key is **F1**.

The button  calls the **Preferences** dialog box for changing the [program's options](#).


The button  opens a window showing the latest news about MakeUp.

To the left of the **Image Window** there is the **Toolbar**. Different tools will appear, depending on the workspace mode **Express/Advanced** chosen. The tools' parameters are shown in the **Settings Panel** and in a pop-up box after right-clicking in the image window.


Pre-Processing Tools (in the **Before** tab):

The button  switches on/off the **Quick Preview** area ([more...](#)).



Mask Correction Tools (available for [Home Deluxe and Business](#) licenses):

The button  activates the **Keep Area** tool which adds fragments to the tone mask.


The button  activates the **Drop Area** tool which removes fragments from the tone mask.


The button  activates the **Eraser** which removes the manual corrections made in the mask, returning to its original form (the auto-mask).

Retouching (Post-Processing) Tools (available in the **After** tab):

Attention! If you switch to the **Before** tab, adjust the parameters and run the image processing again , the changes made with these tools will be cancelled; but they can be restored with the successive use of .


You can use these retouching tools:

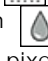
The button  activates the **Teeth Whitening** tool.

The button  activates the **Red Eye Removal** tool.

The button  activates the **Spot Remover** tool which removes small imperfections on an image: stains, dust, etc.


You can also use it to retouch portraits. It can "heal" skin problems. Just [click](#) with the tool on the defect.


The button  activates the **Chameleon Brush** tool.


The button  activates the **Blur** tool which reduces image sharpness by decreasing color contrast between neighboring pixels.


The button  activates the **History Brush** tool which restores areas to their original state. It lets you edit the result without correcting a mask.


Additional Tools:

The button  (only in the standalone version) activates the **Crop** tool which allows cutting off unwanted areas in the image.

The button  activates the **Hand** tool which allows you to scroll the image when it does not fit within **Image Window** at the desired scale. To use it click on the button, bring the cursor over the image, and while keeping the left mouse button pressed move in the desired direction.

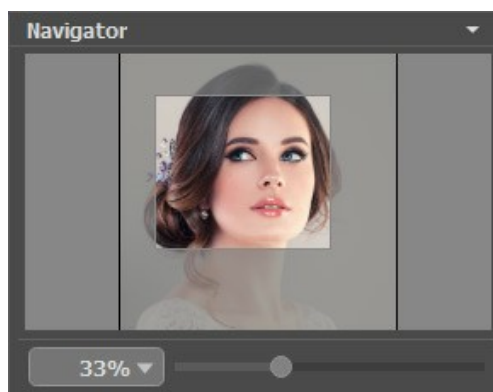
Double-clicking on the tool's icon  on the **Toolbar** makes the image fit the **Image Window**.

The button  activates the **Zoom** tool, which changes the image's scale. To zoom in left click on the image. To zoom out left click with **Alt** on the image. Press **Z** to quickly access the tool.

Double-clicking on the tool's icon  on the **Toolbar** makes the image scale to 100% (actual size).

On the right side of the program's window you can see these sections: Navigator; Parameters; Hints.

You can hide/show a section by clicking on its title.



Navigate and scale the image using the **Navigator**. The frame in the **Navigator** surrounds the area of the image which is visible in the **Image Window**; the area outside of the frame will be shaded. The frame can be dragged, thereby changing the visible portion of the image. To move the frame, place the cursor within it, left click the mouse, and then drag.

Use the slider to scale the image in the **Image Window**. When you move the slider to the right, the image scale increases. When you move the slider to the left, the image scale decreases.

To scroll the image in the **Image Window** you can press the spacebar on the keyboard and drag the image with the left mouse button. Use the scroll wheel of the mouse to move the image up/down, by keeping the **Ctrl** key pressed (Mac: **⌘**) – to the left/to the right, by keeping the **Alt** key pressed (Mac: **Option**) – scale the image. Right-click the scroll bar to activate the quick navigation menu.

You can also change the image scale by entering a new coefficient into the scale field and pressing the button **Enter** (**Return** in Mac). The drop-down menu shows some frequently used coefficients.

You can use hot-keys to change the image scale **+** and **Ctrl**+**+** (**⌘**+**+** in Mac) to increase the image scale and **-** and **Ctrl**+**-** (**⌘**+**-** in Mac) to reduce the scale.




On the right side, there is the **Settings Panel** with the image processing parameters grouped into three tabs: **Smoothing**, **Correction**, and **Effects**; and the list of the **Presets** for these settings. Below there are the options for the selected tool.

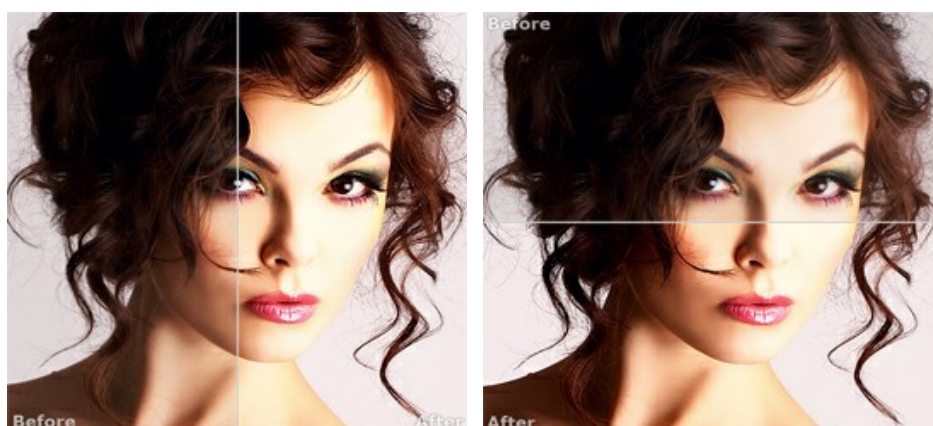
In the bottom part you can see **Hints** for the parameters and buttons when you hover over them with the cursor.

IMAGE VIEW MODES: BEFORE AND AFTER



At the bottom of the Toolbar of **AKVIS MakeUp**, there are three buttons which let you choose how the **Image Window** will look like and arrange the **Before** and **After** tabs.



- Click the first button to open a submenu that contains various options for viewing the original and processed images:
 - The button  provides the standard image window mode with two tabs: **Before** and **After**.
 - The buttons  and  divide the main window into two parts, vertically or horizontally, respectively. The original and processed images become partially visible and the tabs are combined to form the whole picture.







With this arrangement, it's possible to drag the splitter changing the aspect ratio between the **Before** and **After** parts.

- The buttons  and  split the main window into two parts, vertically or horizontally, as well. However, in contrast to the previous option, the windows display the same fragment of the image before and after processing.



Note: Use two windows side by side when you want to see and compare the original and processed versions of an image fragment on one screen. If you would rather see the final image as a whole, you can choose the standard image view mode.

- The button  swaps the positions of the original image and result when displaying two windows.
- The 3rd button lets you choose the background color of the **Image Window**. Pressing , , or  changes the background color to white, gray, or black, while clicking on  opens the **Select Color** dialog where you can choose a color of your choice.

HOW IT WORKS

AKVIS Makeup improves portraits and adds glamour to photos, giving them a professional look. The software lets retouching small defects on a skin, making it radiant, beautiful, pure and smooth as you can see on highly artistic images.

You can get a result with **AKVIS Makeup** quickly and easily. It saves you from the long and laborious task of several stages (manipulating layers, masks, textures, filters, blur and noise, and blending modes).




Cover Face

AKVIS Makeup can run as a *standalone* program and as a plug-in in a graphics editor.

Follow these steps to improve an image in **AKVIS Makeup** and give it a more glamorous look:

Step 1. Open an image.

- If you work with the standalone edition:

The dialog box **Select File To Open** appears if you double-click on the empty workspace of the program or if you click on the button  on the **Control Panel**. You can also drag the required image into the workspace of the program.

The Standalone edition of **AKVIS Makeup** supports **RAW**, **JPEG**, **PNG**, **BMP**, **WEBP**, and **TIFF** file formats.

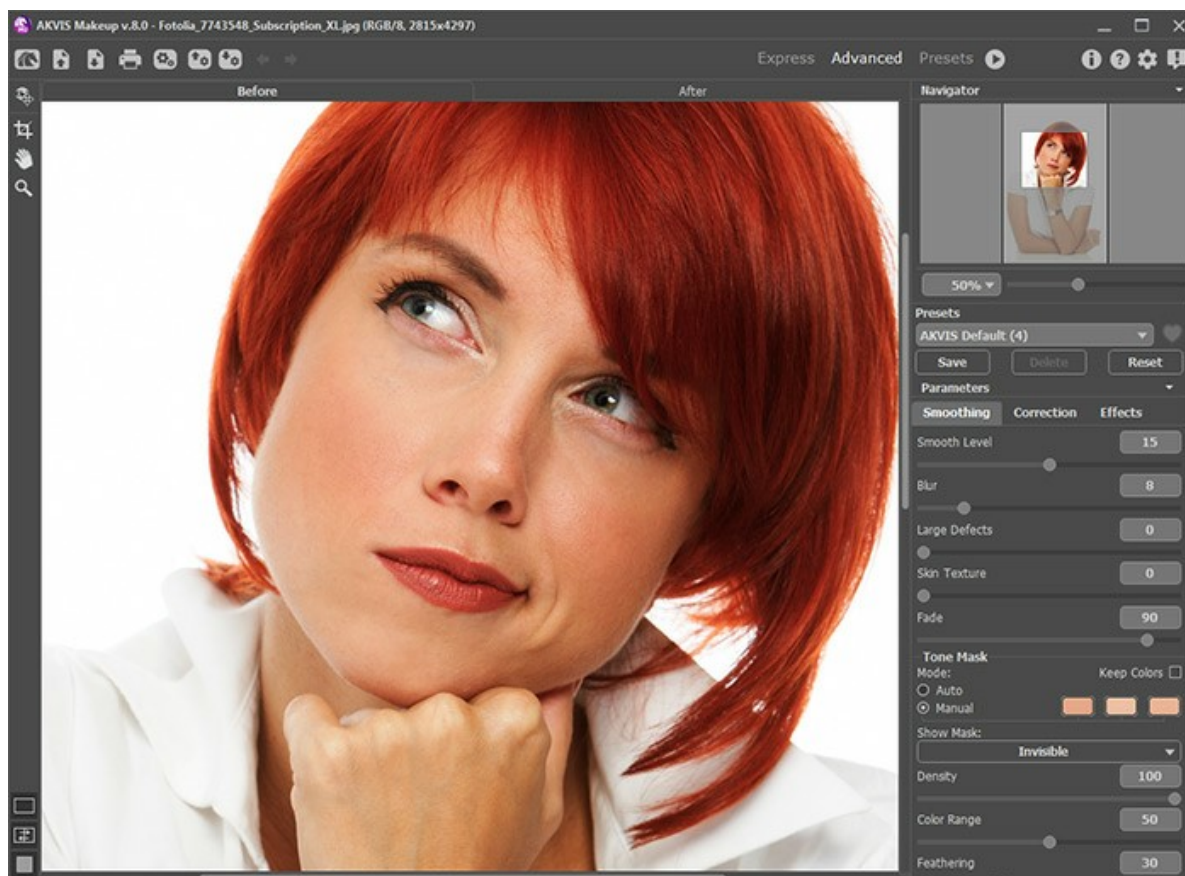
- If you work with the plugin:

Open an image in your photo editor by calling the command **File -> Open** or using the key combination **Ctrl+O** on Windows, or **⌘+O** on Mac.

Call the **AKVIS Makeup** plugin:



In **AliveColors**: Effects -> AKVIS -> MakeUp;
 in **Adobe Photoshop**: AKVIS -> MakeUp;
 in **Corel PaintShop Pro**: Effects -> Plugins -> AKVIS -> MakeUp;
 in **Corel Photo-Paint**: Effects -> AKVIS -> MakeUp.

Step 2. The workspace will be arranged according to the interface mode chosen in the Control Panel: **Express**, **Advanced**, or **Presets**.



Workspace of AKVIS MakeUp

When an image is loaded into the program a [face mask is created automatically](#). This mask is used during the skin correction process. By default, the tone mask is *invisible*. To make it visible switch in the *Show Mask* modes.

You can edit the auto-mask by selecting colors on a portrait with the [eyedropper](#) or using the [mask correction tools](#)   . Learn more about the mask correction tools in [this example](#).

The result will be shown in the **Before** tab in the **Quick Preview** window which is represented by a dotted frame. You can drag the frame or draw it anew on any part of the image, thus analysing different parts of the photo.

To compare the processed sample with the original photo, left-click on the image within the preview area.



Quick Preview

It's possible to change the size of the quick preview area in the program's **Preferences** .

Step 3. If you are not happy with the automatic result, change the settings and/or [manually modify the mask](#).

The parameters in the **Settings Panel** are grouped into three tabs: **Smoothing**, **Correction**, and **Effects**.


- ◊ **Smoothing** tab. These parameters help to improve an image by eliminating small defects. They affect the selected area (tone mask).
- ◊ **Correction** tab. The parameters in this tab offer additional ways of image processing (**Sharpness**, **Brightness**, **Contrast**, and other standard settings). They affect the entire image.
- ◊ **Effects** tab. Here you can apply creative effects (**Glamour Glow** and **Vignette**) to change the mood of your picture and make it look more magical, romance, or dramatic. They affect the entire image.



Without Effects




Adding Effects

Step 4. To process the entire image, click on  or on the **After** tab. After processing it is possible to switch between tabs by pressing the left mouse button on any point of the image.




Processing Result

Step 5. It is possible to save the settings you like as a **Preset** to use them in the future. The presets are also helpful when working in the **Batch Processing** mode. [Learn more about the MakeUp Presets.](#)


Step 6. You can also make final touches and correct the result in the **After** tab using the **retouching tools**: .




Step 7. In the standalone version you can also **print** the image with .

Step 8. Save the processed image.

- If you work with the standalone edition:

Click on the button  to open the **Save as** dialog box. Enter a name for the file, choose the format (**TIFF**, **BMP**, **JPEG**, **WEBP** or **PNG**) and indicate the target folder.

- If you work with the plugin:

Apply the result by pressing . The **AKVIS MakeUp** plugin will close and the picture will appear in the workspace of the photo editor.

Call the **Save As** dialog box using the command **File -> Save As**, enter a name for the file, choose the format and indicate the target folder.

SKIN SMOOTHING

In **Smoothing** tab, you can improve a portrait by removing small imperfections on the skin. The program intelligently recognizes the face on a photo and creates a mask with the skin tone areas. It's possible to modify the **tone mask** to only the areas you want to process.

Hint: To enhance the effect, edit the tone mask using the **Keep Area** tool . Find more information about the mask correction tools [here](#).

Adjust the **Smoothing** settings:

Smooth Level (0-30). The parameter evens the skin texture. Small details are preserved.



Smooth Level = 0



Smooth Level = 30

Blur (0-50). The parameter sets the level of blurring. The higher its value, the blurrier the skin texture is and the less small details are kept.



Blur = 0



Blur = 50

Large Defects (0-100). Increase the parameter to smooth large irregularities (works on the [manually created tone mask](#)).



Large Defects = 0



Large Defects = 100

Skin Texture (0-40). The parameter adds some noise to the skin for a more natural look.



Skin Texture = 0



Skin Texture = 20

Fade (10-100). The parameter blends the mask with the source image. The smaller the value, the more pronounced the original skin texture appears.



Fade = 20



Fade = 100

Tone Mask

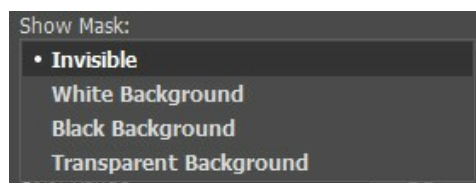
There are two ways to create a tone mask: **Auto** and **Manual**. In the first method the program detects the area of the face *automatically*, while the second method requires you to *manually* select the *skin color* which the program will use as a basis for creating the mask.

You can enable the **Keep Colors** check-box to use this color set for all presets.



Creating a Mask

When an image is loaded into the program a face mask is created automatically. This mask is used during the skin correction process. By default, the mask is *Invisible*. To view the mask on a *White*, *Black*, or *Transparent Background*, select the appropriate option from the drop-down list.



Mask View Modes




Mask on a White Background




Mask on a Black Background



Mask on a Transparent Background

Making the mask visible allows you to see exactly where processing will be applied, and the mask correction tools   become accessible.

 become accessible.

You can manually modify the auto-mask by choosing *colors* on the portrait with the eyedropper.


Left-click over one of three square cells. The cell will then contain a dotted selection, and when the cursor is dragged over the image it will take the form of a eyedropper.

To select a color just click with the eyedropper over the face. Double left-clicking over a cell opens the color selection dialog. Right-clicking a cell removes its color.

For *Deluxe* and *Business* licenses, it's possible to edit the mask with the tools ([example](#)):

Keep Area tool  adds fragments to the tone mask.

Drop Area tool  removes fragments from the tone mask.

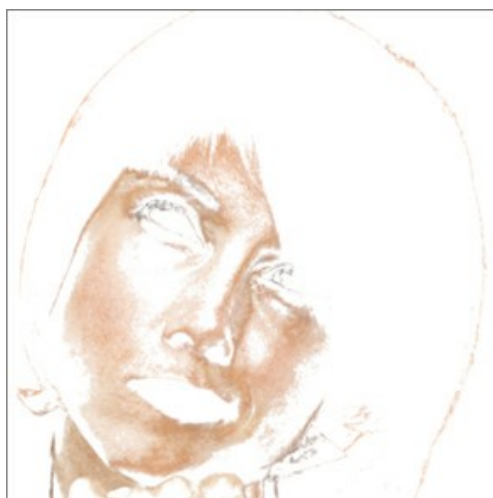
Eraser  cancels the manual corrections made in the mask with the above mentioned tools, returning it to the original form.

The tools' option:

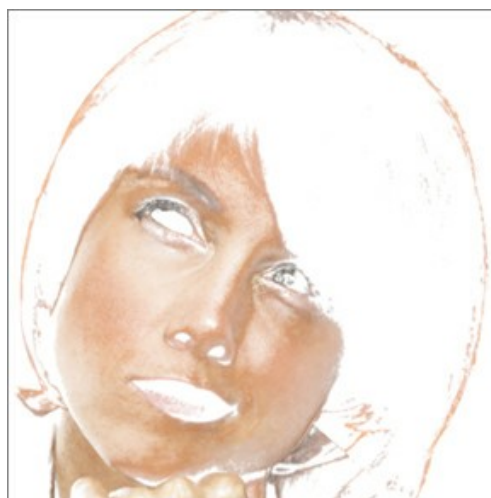
- **Size** affects the tool's diameter.
- **Hardness** affects the blurriness of the tools edges. The less the value the more blurry the tool's edges become.
- **Pressure** affects the force of the tool applied to the image.

Adjust the **Tone Mask** parameters:

Density (0-100) affects the number of pixels stored in the mask.

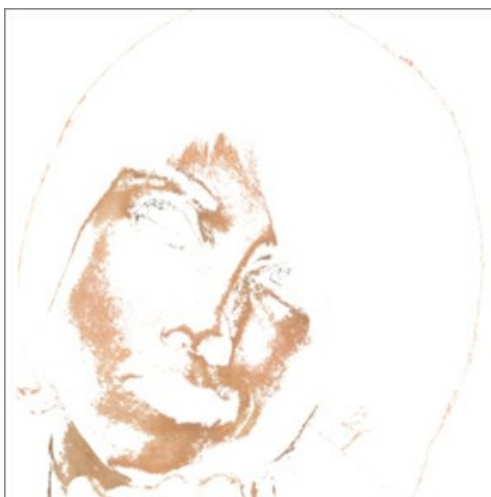


Density = 10



Density = 90

Color Range (0-100) changes the number of colors used in the mask.

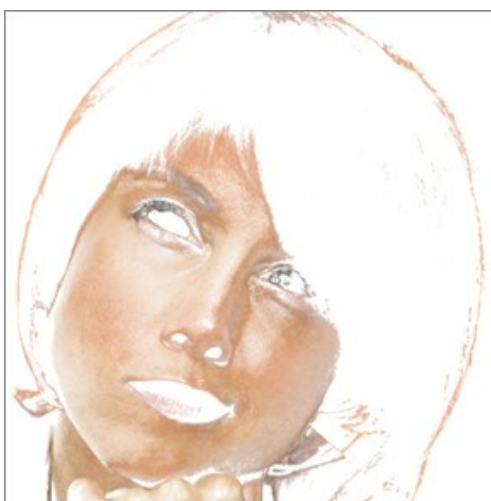


Color Range = 10

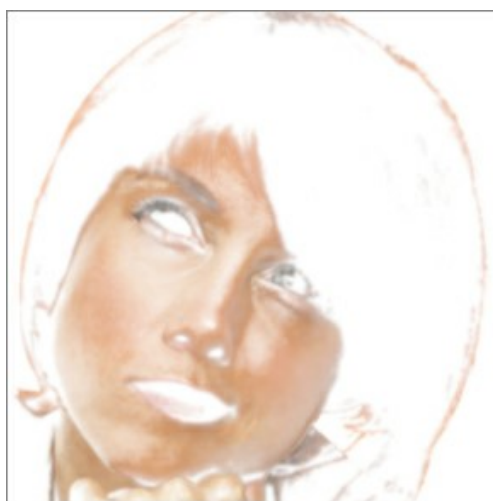


Color Range = 80

Feathering (0-100) smooths the edges of the mask to enhance the transition between treatment zones.



Feathering = 0

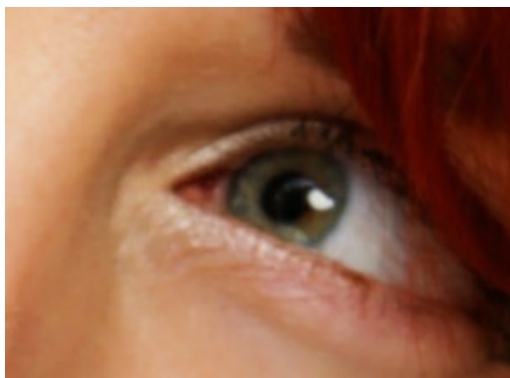


Feathering = 90

IMAGE CORRECTION

The parameters in the **Correction** tab in **AKVIS MakeUp** offer additional ways of image processing. They affect the entire picture. You can adjust these standard settings to improve the photo:

Sharpness (-50 to 50) adjusts the clarity of the image by changing the contrast of adjacent pixels. Values in the negative range smoothen the image while values in the positive range sharpen it.



Sharpness = -40



Sharpness = 40

Brightness (-100 to 100) affects how the image is illuminated. At higher values the image is brighter while at lower values it is darker.

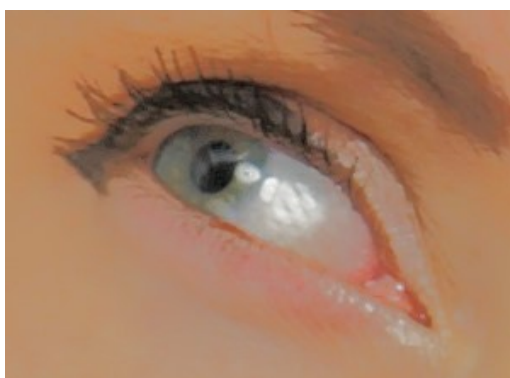


Brightness = -40

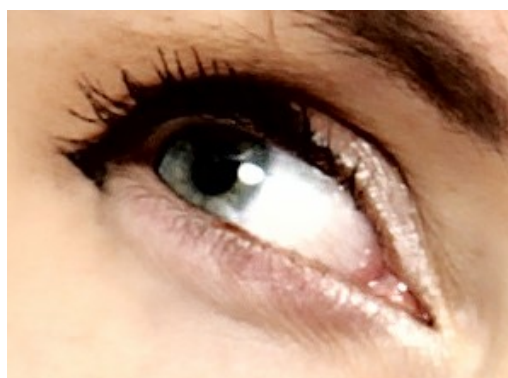


Brightness = 40

Contrast (-50 to 50) increases (at values greater than 0) or decreases (at values less than 0) the difference between light and dark areas of the image.



Contrast = -50



Contrast = 35

Hue (-100 to 100) is used to change the color tone.



Hue = -20



Hue = 20

Saturation (-100 to 100) changes the intensity of color from a neutral gray to the brightest color.



Saturation = -50



Saturation = 50

EFFECTS: GLAMOUR GLOW AND VIGNETTE

Using the **Effects** tab in **AKVIS MakeUp** you can apply creative effects (**Glamour Glow** and **Vignette**) to change the mood of your picture and make it look more magical, romantic, or dramatic.

The **Glamour Glow** effect adds a soft glow effect by creating a blurred layer above the image. When these layers are blended together it results in a surreal appearance. The effect gives a feeling of elegance and grace, and even dreaminess.

Intensity (0-100) defines the strength of the glow effect.



Intensity = 5



Intensity = 80

The **Vignette** effect lets you lighten or darken the edges and draws your attention towards the central part of the image.

Color. Choose the color of the vignette. Adjust the amount of color with the **Intensity** parameter (0-100).



Dark Edges



Light Edges

Distance (0-100) determines how far from the center of the image shading will begin.



Distance = 0



Distance = 50

Shape (-100 to 100) affects the form of the unshaded area of the image. At negatives values it takes the form of a rectangle with rounded edges, while at positive values it takes the form of a circle.



Shape = -50



Shape = 50

Smooth Transition (0-100) adjusts the smoothness of the boundary between the shaded area and the central part. Increasing the value increases the fading effect.



Smooth Transition = 10




Smooth Transition = 50

Position. Move the white marker to shift the vignette. You can see the current coordinates of the center in the X and Y fields.




Moving Vignette

RETOUCHING TOOLS

AKVIS MakeUp also offers the post-processing tools which can be applied on the **After** tab. These retouching tools helps to make final touches and correct the result: .

Retouching Tools:

The **Teeth Whitening** tool  lets you make the teeth whiter. Apply the tool to the image, it will lighten the areas finding edges. The effect is increased with each successive brush stroke.

The tool can be also used to process the whites of eyes.

You can adjust these parameters for the tool:

Size (20-200) affects the tool's diameter.

Smoothing (0-10) affects the degree of the edge softness of the stroke.

Tolerance (0-100%) determines the sensitivity of the tool: the higher the value, the more areas are changed.

Strength (10-100%) defines the how much the image will be whitened.



Fragment of the Original Image



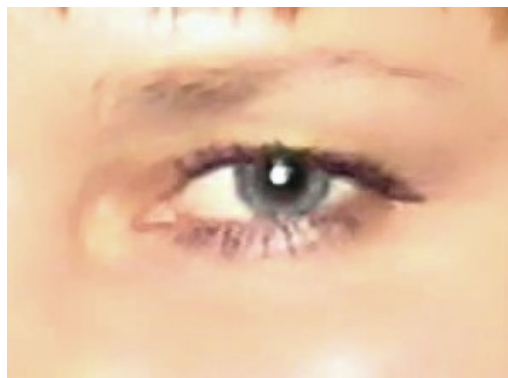
Using the Teeth Whitening Tool

The **Red Eye Removal** tool  lets you correct the red eye defect.


You can change the tool's **Size** (10-300).



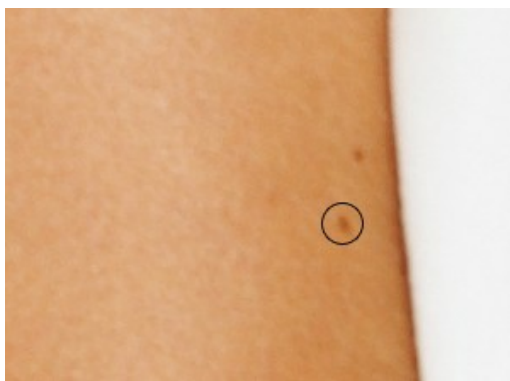
Fragment of the Original Image



Using the Red Eye Removal Tool

The **Spot Remover** tool  removes small imperfections and "heals" skin problems. Just click with the tool on the defect to remove it.


You can change the **Size** (7-200) for this tool.



Fragment of the Original Image



Using the Spot Remover Tool

Chameleon Brush  copies parts of an image from one area to another, while taking into account the color palette, shadows, textures, lighting, and other characteristics of the background, onto which the clone is placed. This tool preserves the texture of the image.

Tools' options:

Size (10-500) - diameter of the brush.

Aligned check-box. You can select the cloning method using the **Aligned** option. When the check-box is activated, a single clone will be created using information from around the selected source: in this case each time the left mouse button is pressed a clone will be selected from the relevant area. When the check-box is disabled, each time the mouse button is released the cursor returns to the source area, and new clone fragments are created from the same area.

Flip Horizontal. This option allows a clone to be mirrored along the standing axis, i.e. interchanging the left and right sides.

Flip Vertical. This option mirrors a clone by turning the image upside down.

Scaling (20-400%). The size of the clone relative to the original fragment.



Fragment of the Original Image



Using the Chameleon Brush

The **Blur** tool  reduces image sharpness by decreasing color contrast between neighboring pixels.

You can adjust these parameters for the tool:

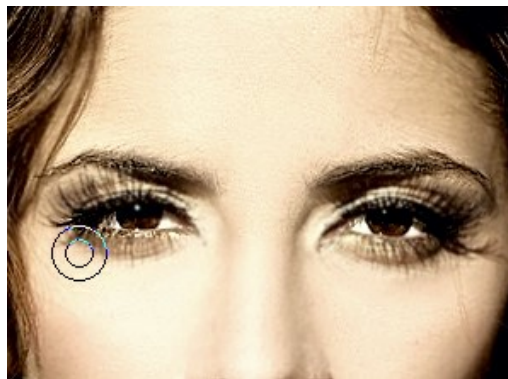
Size (1-200) affects the tool's diameter.

Hardness (0-100%) defines the blurriness of the tool's edges. The less the value the more blurry the tool's edges become.


Radius (0.1-5.0) determines the intensity of the effect on an image. It specifies the area of the points for blurring: at higher values the blurring radius is larger.



Fragment of the Image



Blurring

The **History Brush**  restores areas to their original state.

You can adjust these parameters for the tool:

Choose between the restoration modes: **Restore to Original/Edit Brushes:**

- 1st mode lets you return to the original state. It helps to edit the result without correcting a mask.
- 2nd mode lets you correct the result of the post-processing brushes keeping the effect achieved at the initial stage.

Size (1-2000) affects the tool's diameter.

Hardness (0-100%) defines the blurriness of the tool's edges. The less the value the more blurry the tool's edges become.

Strength (1-100%) affects the degree of restoration to the original state.



Original Image



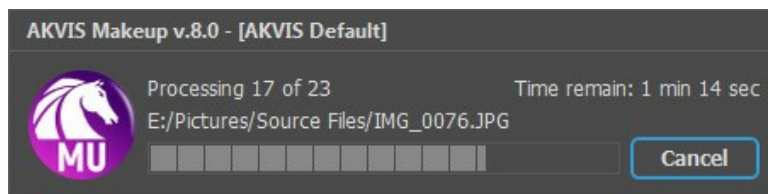
Using the History Brush

BATCH PROCESSING

AKVIS MakeUp supports **batch processing**, i.e. the possibility to automatically process a series of images with the same settings.

Batch processing is useful when dealing with a lot of photos taken under the same conditions with identical camera settings or to achieve a similar effect. The feature is ideal for improving marriage photographs or graduation party photos. You won't need to process every single picture, but just apply the chosen settings to the whole folder with the event shooting.

Using batch processing is simple! [See Video Tutorial](#).



Even if you've never used this feature before it is simple to learn!

If you use the standalone version of **AKVIS MakeUp**, [read the instructions here](#).

If you use the **MakeUp** plugin in Photoshop, [use this tutorial](#).

BATCH PROCESSING WITH PHOTOSHOP PLUGIN

The AKVIS plugins support the automation feature in **Adobe Photoshop**.

Batch processing is very useful and time saving when you have to apply the effects to a number of photos. This method applies the same settings to a folder full of images.

Even if you have never used batch processing you will find no difficulties in understanding it. First you create an **Action** in Photoshop and then apply it to a photo folder.

Follow the instructions:

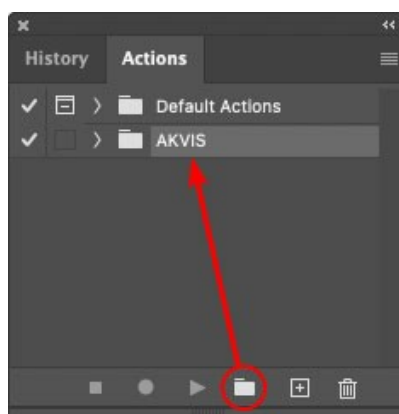
Step 1. Create two new folders, for example: "source-files" and "result-files". Place original images into the "source-files" folder. The results will be saved in the "result-files" folder.

Step 2. Open one of the original images in **Adobe Photoshop**. We will use this photo to adjust the plugin's settings and create an action.



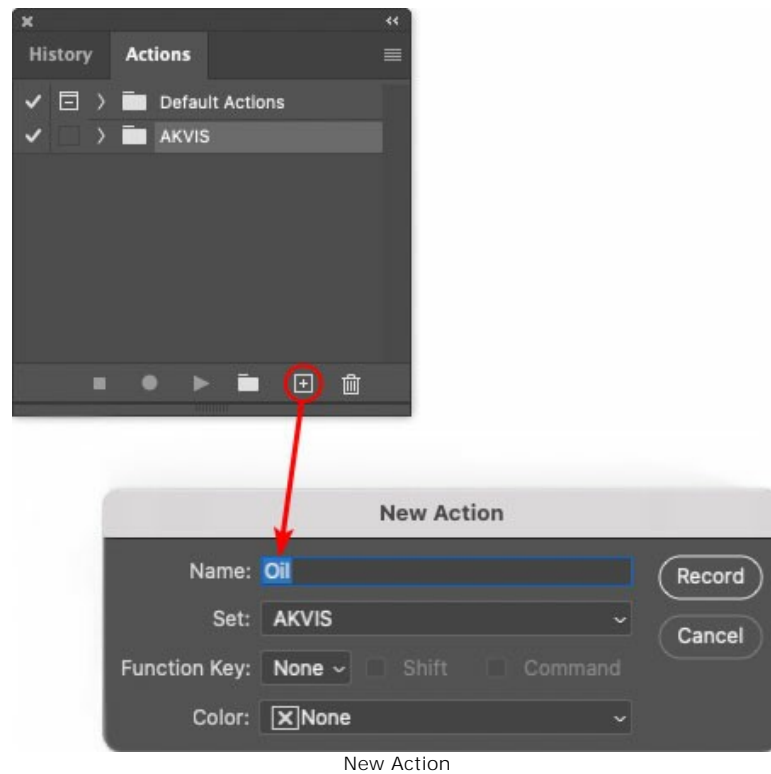
Step 3. In the **Actions** palette click **Create New Set** button. In the dialog window give a name for a new set of actions, for example, "AKVIS".

If you already have a special set for the AKVIS actions, you can just choose it.



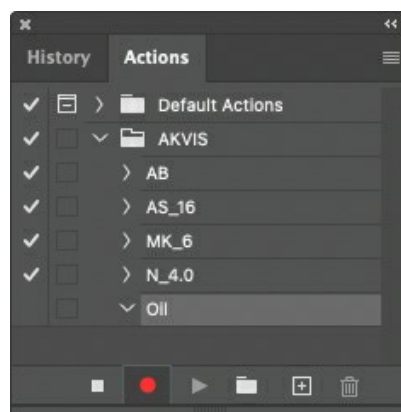
Actions Palette

Step 4. Press **Create New Action** and give a name for it, for example, "Oil".

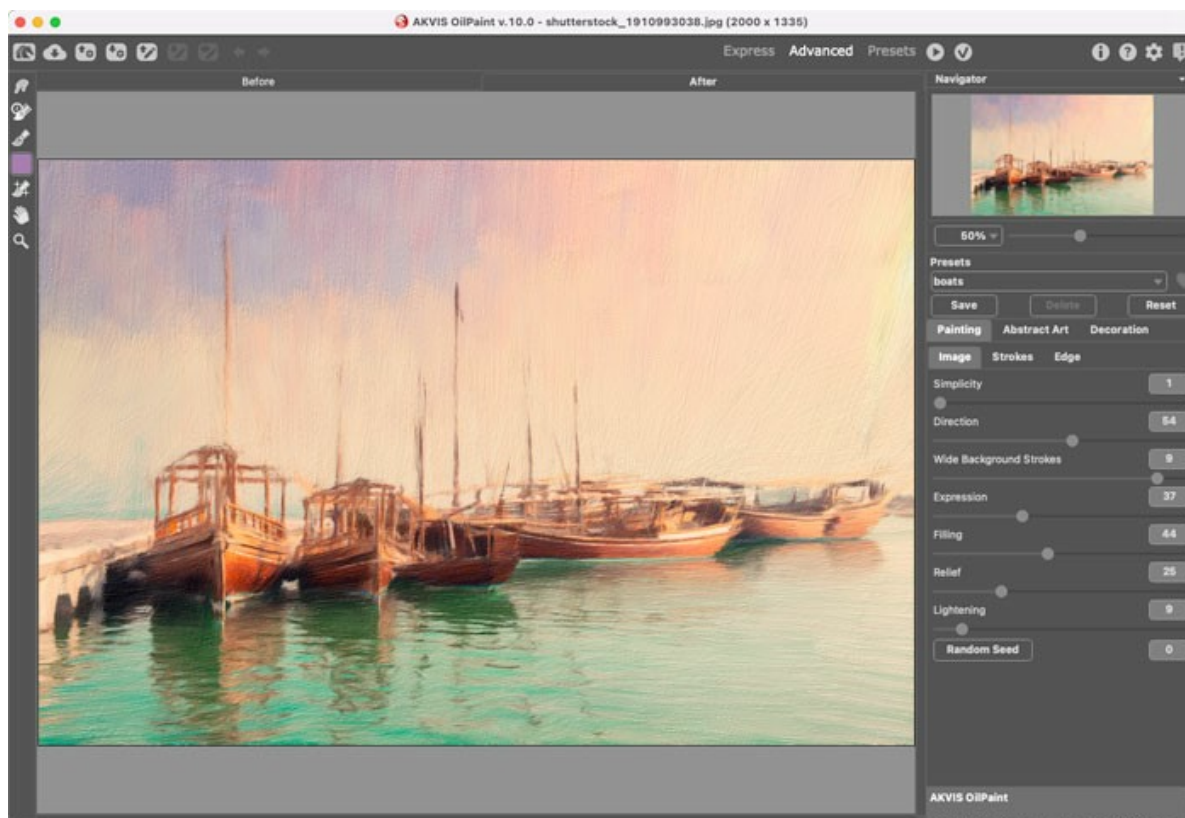



New Action

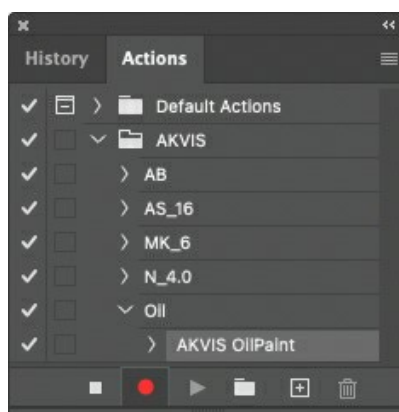
Press the **Record** button, and the recording of the action will immediately start.



Step 5. Call the plugin and adjust its parameters.

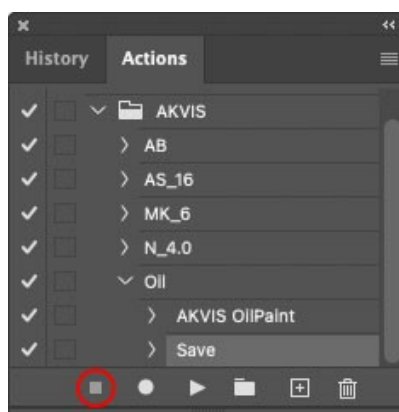


Step 6. Press the button . The plug-in window will close and the effect will be applied to the image. In the **Actions** palette, in your new action, you will see a new line with the plugin's name.



Step 7. Remember that the action is still being recorded. Now, you should save the image. Choose **Save As** in the **File** menu and save the image into the destination folder.

Step 8. Stop the action recording by pressing **Stop playing/recording** at the bottom of the **Actions** palette.



Step 9. Delete the file that you have just saved.

Step 10. The action is created and you can proceed to batch processing of the photos.

In the **File** menu of the editor choose **Automate -> Batch**.

Step 11. In the **Batch** dialog window and set the parameters:

In the **Set** drop-down list choose "AKVIS" and the new action.

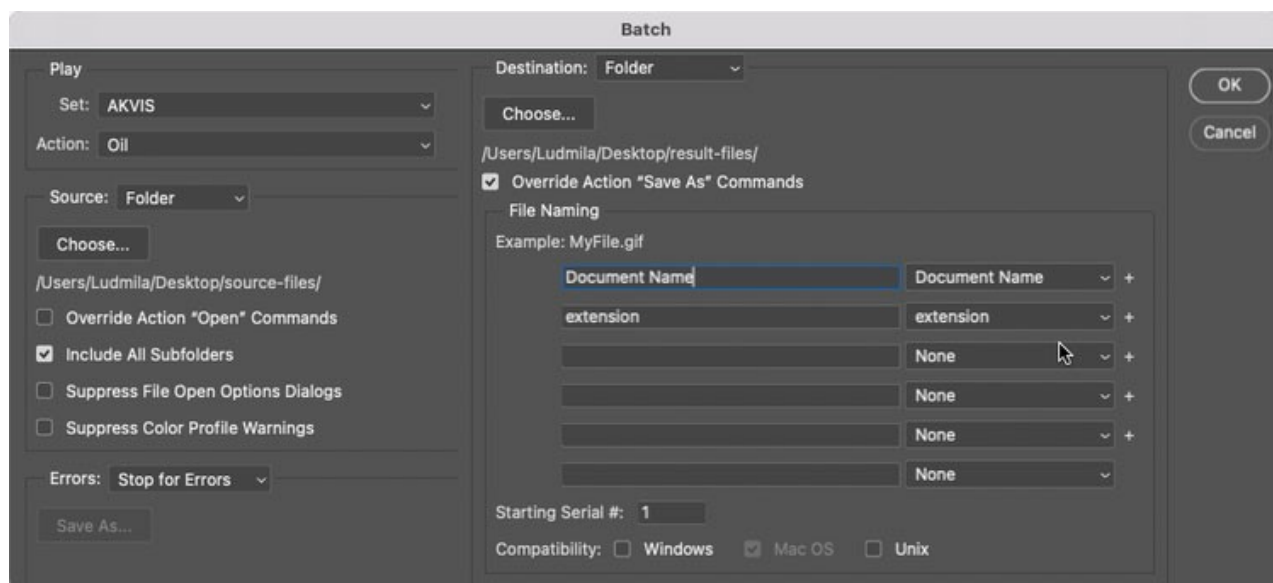
In the **Source** option set **Folder**. Press the **Choose...** button and select "source-files".

As the Open command was not recorded in the action, the **Override Action "Open" Commands** check-box should be deactivated.

For **Destination** select **Folder**, then press the **Choose...** button and select "result-files".

Activate **Override Action "Save as" Commands** check-box.

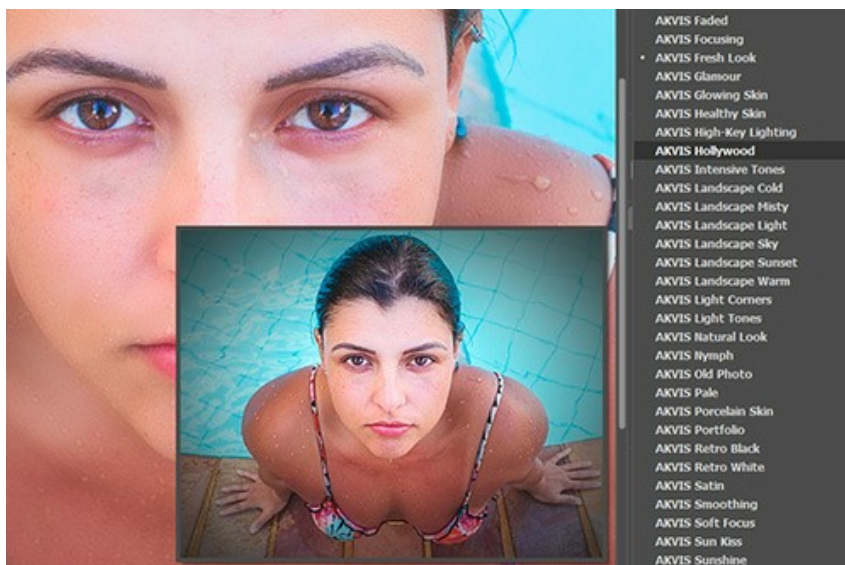
In the **File Naming** section you can create the filenames structure for the resulted images. If you do not want to change the names, in the first combo-box choose **document name**, and in the second - **extension**.



Step 12. Press **OK** to start processing. Photoshop will apply the AKVIS plugin to all photos in the "source-files" folder, one by one, and will save them to the "result-files" folder.

MAKEUP PRESETS

AKVIS MakeUp includes a number of ready to use skin retouching presets which help you start working. When moving a cursor over a preset in the drop-down list, the quick result appears in the small window on the left side of the list.



To process the entire image using a preset, select it from the list and click on .

A preset contains the settings of all tabs.

You can apply one of the AKVIS presets or modify the parameters to achieve the desired result.

To create your own preset, type a name for the preset into the field and press **Save**.

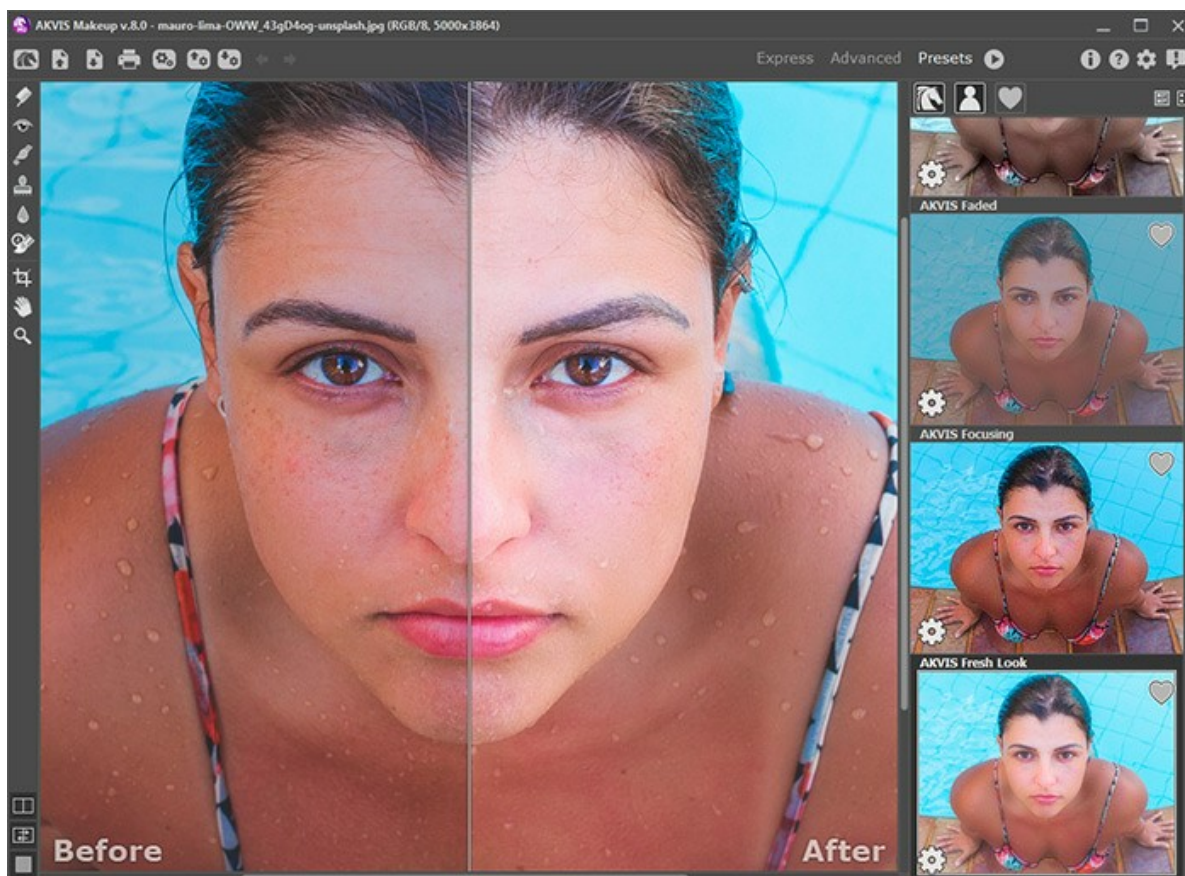
To return to the default settings of the selected preset, click on **Reset**.

To delete your preset, choose it from the drop-down list and press **Delete**. The AKVIS built-in presets cannot be removed.

Next to the preset name field there is a heart icon. Click on it to add the selected preset to **Favorites** or to remove it from this group of presets.

Presets Gallery

Click on the **Presets** button in the top panel to switch to the visual display mode of presets with the live preview.



Presets Gallery

You will see a list of presets sorted alphabetically (AKVIS presets) or by creation date (user presets). When an image is loaded into the program, preset thumbnails are generated.

Click on a thumbnail to select the preset. Double-click on the thumbnail starts processing the entire image.

Double-click on the name of the user preset to rename it. The AKVIS built-in presets cannot be renamed.

Use these buttons to change the display of presets:



- to show **AKVIS Presets**;



- to show **User Presets**;



- to show presets marked as **Favorites**.

Presets thumbnails can be arranged in two ways:



- as a vertical list;



- filling in the entire program area.

The preset control buttons are duplicated by the context menu commands:



Add to Favorites /  **Remove from Favorites**;



Rename Preset (only for user presets);



Move Up (only for user presets);





Move Down (only for user presets);



Delete Preset (only for user presets);



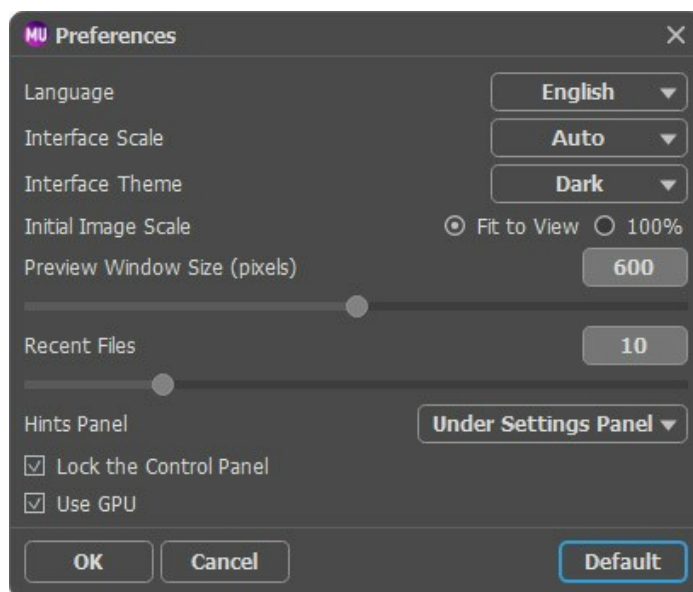
Show Parameters.


It's possible to export and import user presets (a file with the **.makeup** extension) using these buttons:  and .

[Read more about import and export user presets.](#)

PROGRAM PREFERENCES

The button  opens the **Preferences** dialog box. It looks like this:




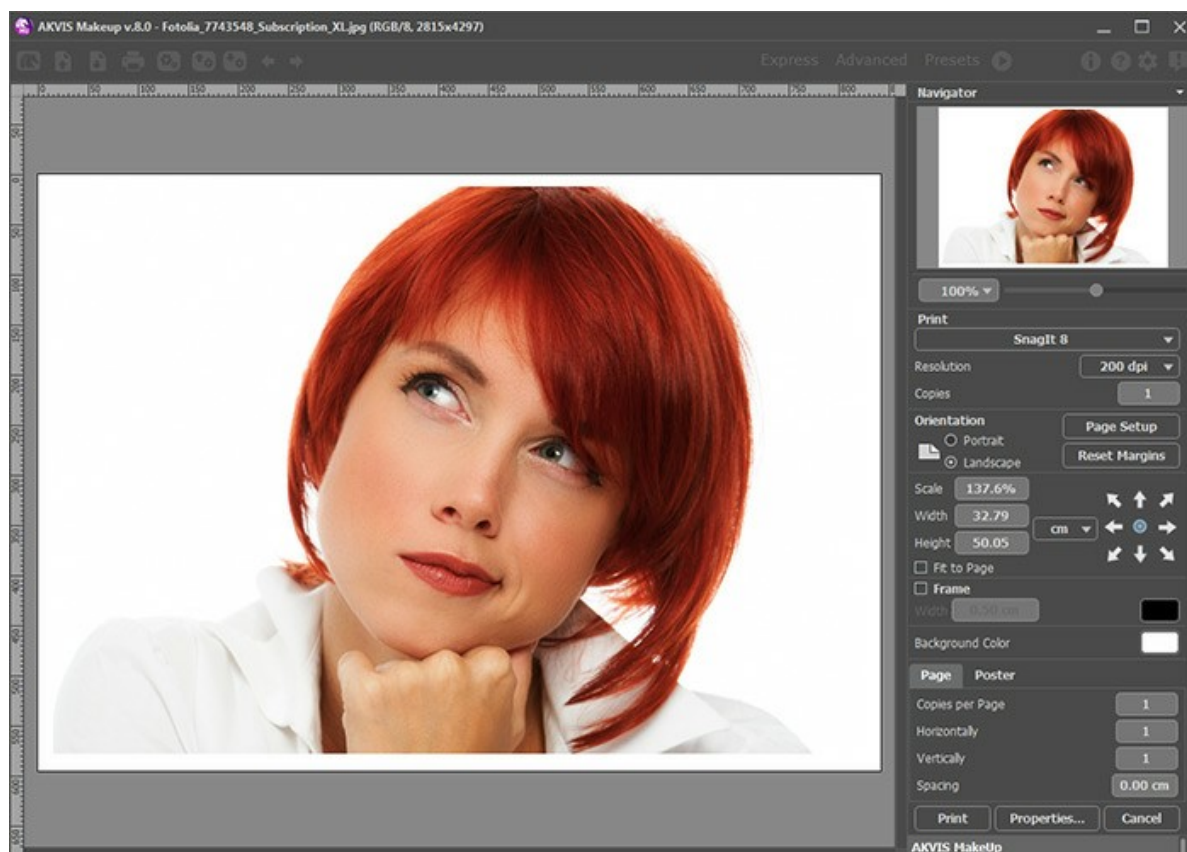
- **Language.** Change the program language by selecting another from the drop-down list.
- **Interface Scale.** Choose the size of the interface elements. When it is set to **Auto**, the program workspace will automatically scale to fit the screen resolution.
- **Interface Theme.** Select the style of the program interface: **Light**, **Gray** or **Dark**.
- **Initial Image Scale.** This option defines the way the image is scaled in the Image Window.
 - **Fit to View:** the image is completely visible in the window;
 - **100%:** the image doesn't scale (generally, only a part of the image is visible).
- **Preview Window Size.** You can change the size of the [quick preview area](#): from 200 x 200 to 1,000 x 1,000 pixels.
- **Recent Files** (available only in the standalone version). The number of recent documents. The list of the recent files, sorted by time, become visible by right mouse clicking on . Maximum: 30 files.
- **Hints Panel.** You can choose how the hints will be shown:
 - **Under Image Window;**
 - **Under Settings Panel;**
 - **Hide.**
- **Lock the Control Panel** check-box. It disables the possibility to hide/show the top panel. If the check-box is selected the panel is always visible. Uncheck the option to unlock the panel, and you will be able to hide/show it by clicking on the small triangle button (in the middle of the panel). The minimized panel will be shown when moving the cursor over it.
- **Use GPU.** The check-box lets you turn on GPU acceleration. If your computer does not support GPU acceleration the check-box will be disabled.

To save changes made in the **Preferences** window press **OK**.

If you need, click on the button **Default** to come back the default settings.

PRINT IMAGES IN AKVIS MAKEUP

In the standalone version of **AKVIS Makeup** you can print the image. Press the button  to open the **Print** options.



Print Options in AKVIS Makeup

Adjust the parameters appearing in the Settings Panel:

Choose a printer from the list of available devices, set the desired resolution, as well as the number of copies to print.

In the **Orientation** group, set the position of paper: **Portrait** (vertically) or **Landscape** (horizontally).

Click the **Page Setup** button to open a dialog box to choose the size of the paper and its orientation, as well as the print margins.

Press the **Reset Margins** button to return the page margins to the default size.

Change the size of the printed image adjusting the parameters **Scale**, **Width**, **Height** and **Fit to Page**. These parameters have no effect on the image itself, just on the print version. You can change the size of the printed image by entering any value in %, or by entering new values in **Width** and **Height**.

To adjust the size of the image to the paper size, select **Fit to Page**.

Move the image on the page with the mouse or align it using the arrow buttons.

You can activate **Frame** for the image and adjust its width and color.

Choose the **Background Color** by clicking on the color plate.

In the **Page** tab, you can adjust printing of the multiple copies of the image on a single sheet.



Print Page

- ◊ **Copies per Page.** It lets you specify the number of copies of the image on one page.
- ◊ **Horizontally** and **Vertically.** These parameters indicate the number of rows and columns for the copies of the image on the page.
- ◊ **Spacing.** The parameter sets the margins between the copies of the image.

In the **Poster** tab, it's possible to customize printing of the image on multiple pages for the subsequent junction into a large picture.



Print Poster

-
- ♦ **Pages.** If the check-box is enabled, you can specify the maximum number of the pages in which the image will be divided. The image scale will be adjusted to fit this number of the sheets. If the check-box is disabled, the program will automatically select the optimal number of the pages in accordance with the actual size of the image (scale = 100%).
 - ♦ **Glue Margins.** If the check-box is enabled, you can adjust the width of the padding for bonding sheets. Margins will be added to the right and to the bottom of each part.
 - ♦ **Show Numbers.** With the enabled check-box, a sequence number of each part, by a column and a row, will be printed in the margins.
 - ♦ **Lines of Cut.** Activate the check-box to display the cut marks in the margins.

To print the image with the chosen parameters, press the **Print** button.

To cancel and close the printing options click on **Cancel**.

Click the **Properties...** button to open a system dialog box that enables you to access the advanced settings and send the document to print.

HIGH KEY PORTRAIT

High Key photography is a technique with white light falling evenly on all objects in a scene. High Key photographs contain tones from light gray to pure white. In these photos the eyes, eyelashes and facial contours are accentuated. Such portraits are characterized by the absence of heavy shadows and details.

Creating a **High Key portrait** is typically a complicated process in which the subject is illuminated in white reflected light from the surface of three sources. This tutorial will show how a high key portrait can be created in just a few minutes with **AKVIS MakeUp**.



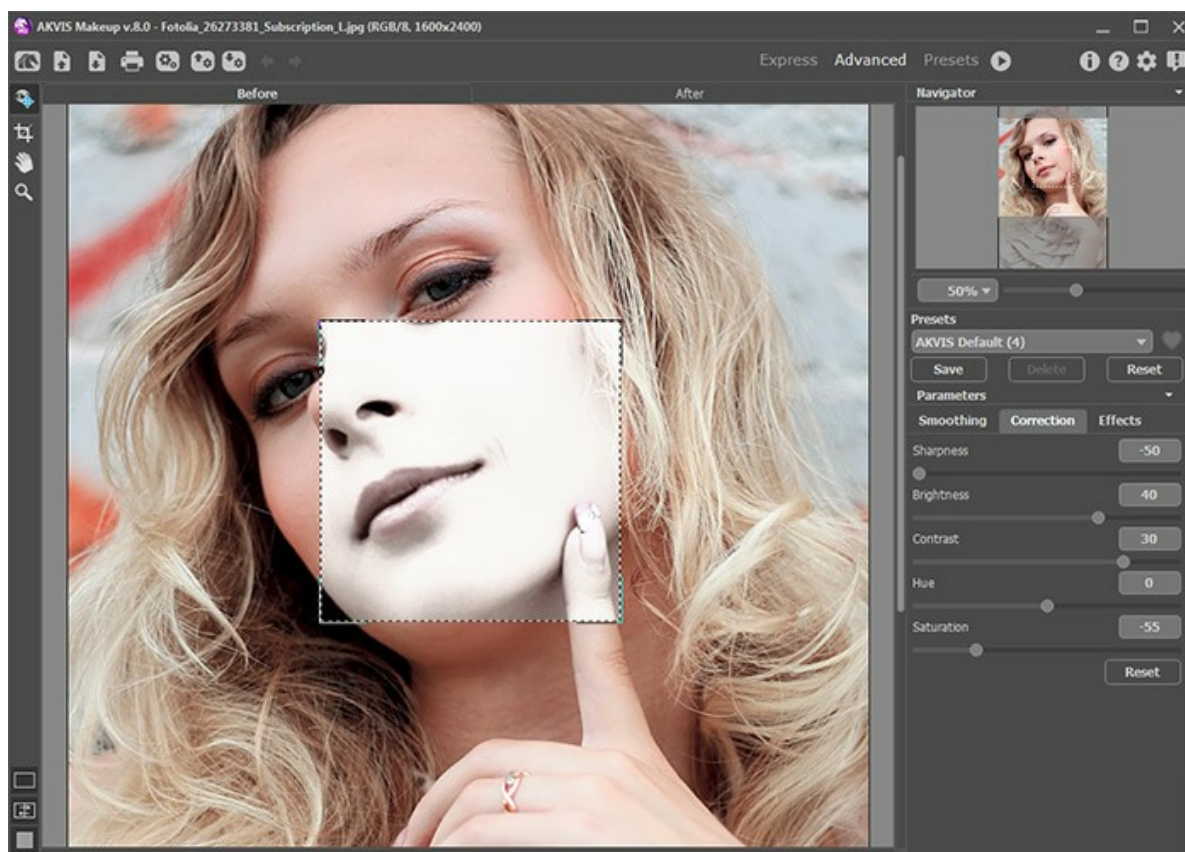
Step 1. [Open](#) an image in **AKVIS MakeUp**.




Original Image

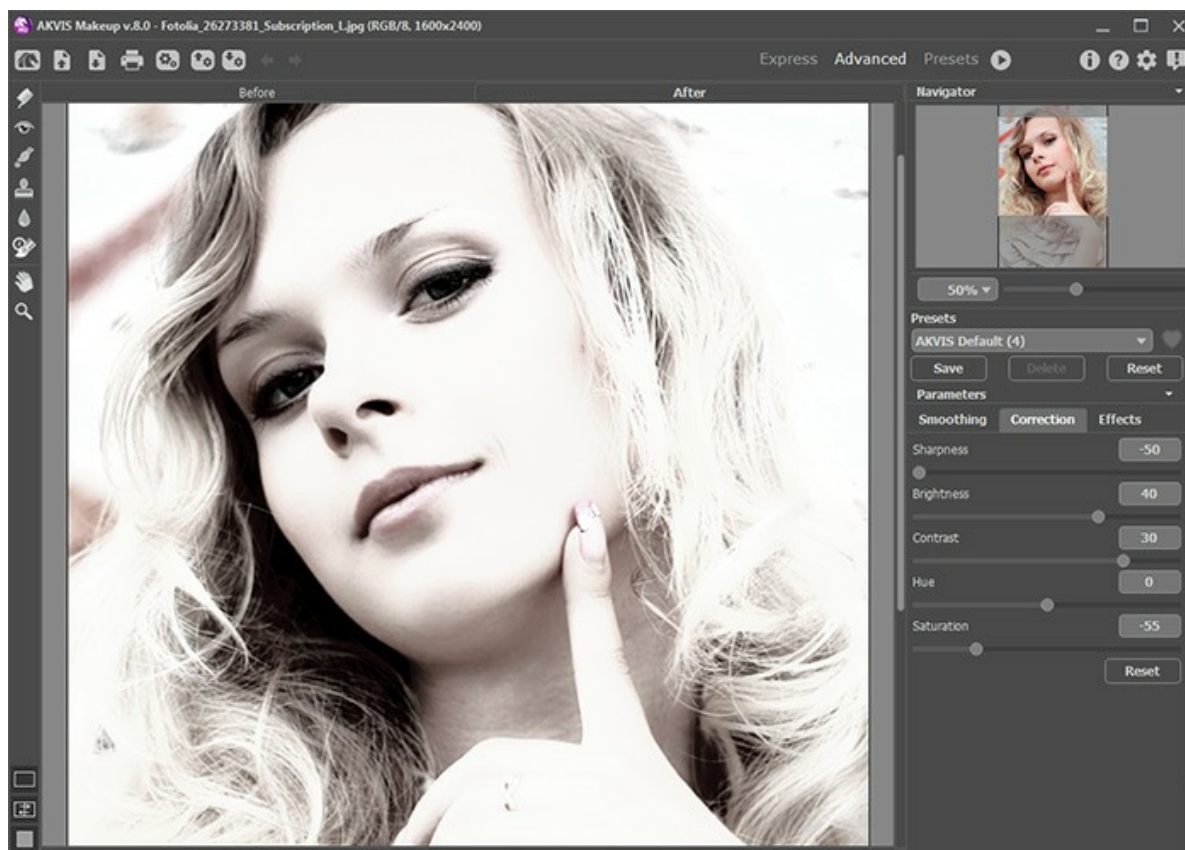
Step 2. To create a high key portrait, first click on the **Correction** tab and choose the appropriate parameters.

Turn down **Saturation** and increase **Brightness** so that a small amount of color remains in the image, and grey areas are brightened. The **Hue** parameter, as a rule, should be shifted slightly to cooler tones. **Sharpness** should be weakened to soften the image. Finally, change **Contrast**.



Correcting the Image in AKVIS MakeUp

Step 3. Start processing the entire image by pressing .



Result After Processing

To strengthen the effect you can add an artificially bright white background:



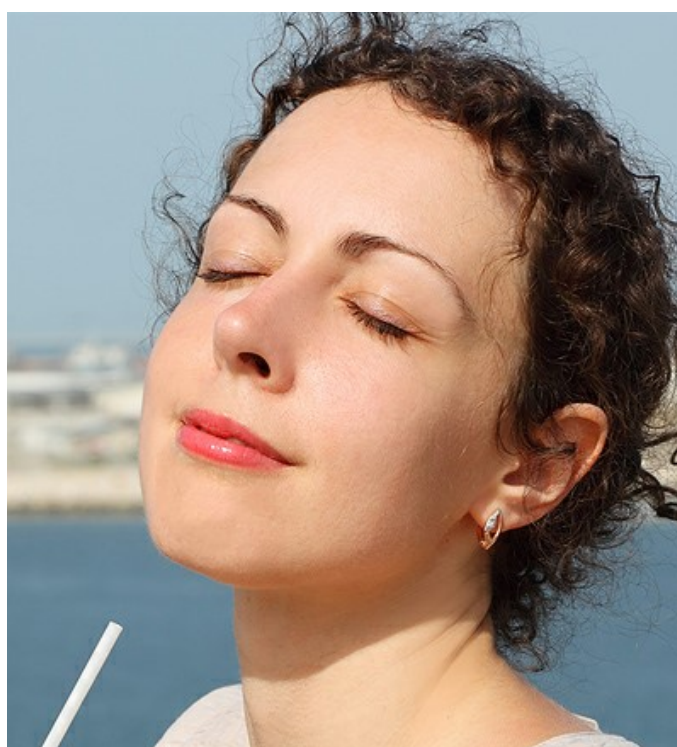
High Key Portrait

IMPROVING SKIN TONE

Women have always tried to look more beautiful. One of the most important aspects of make-up is to achieve a smooth and even skin complexion. Usually this is achieved with foundation, which gives the skin a certain color. If you don't have any foundation on hand, [AKVIS MakeUp](#) can deal with this task wonderfully.



Step 1. Open an image.



Original Image

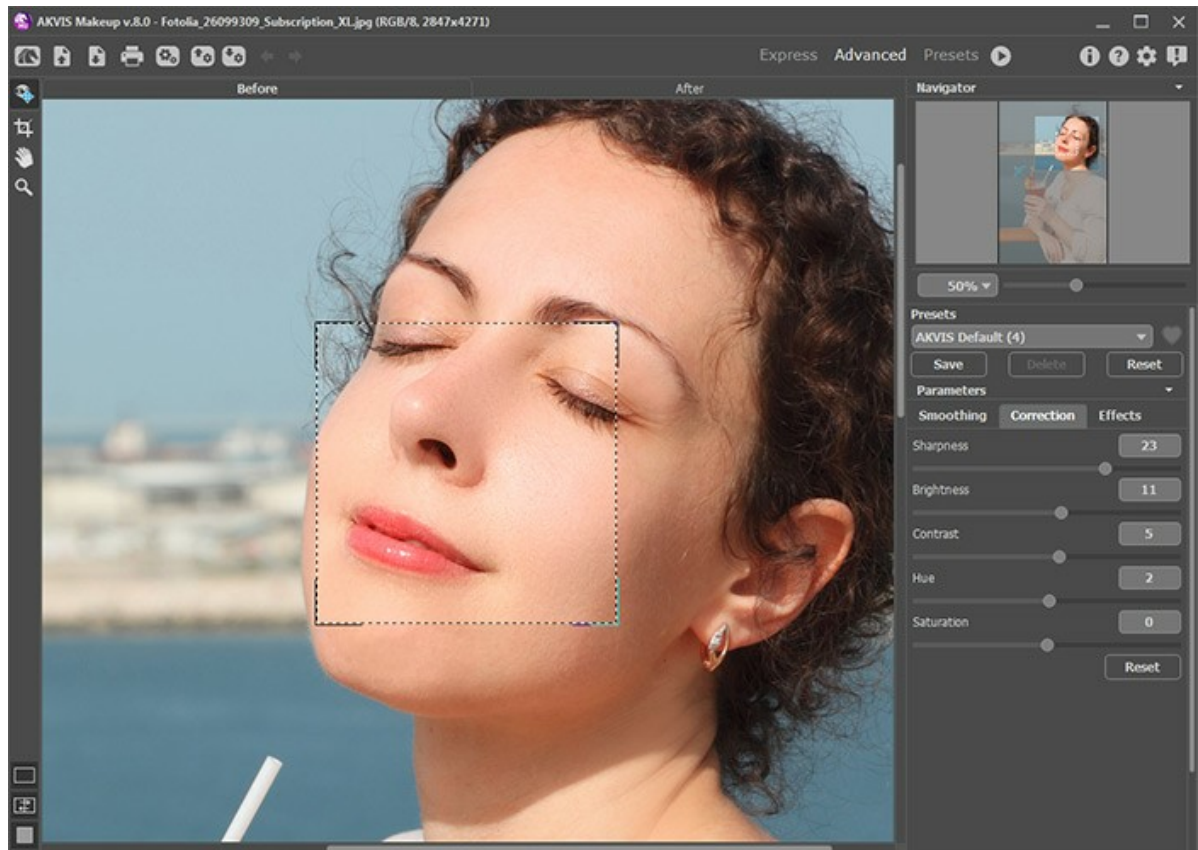
Step 2. The default settings are sufficient for smoothing the skin.




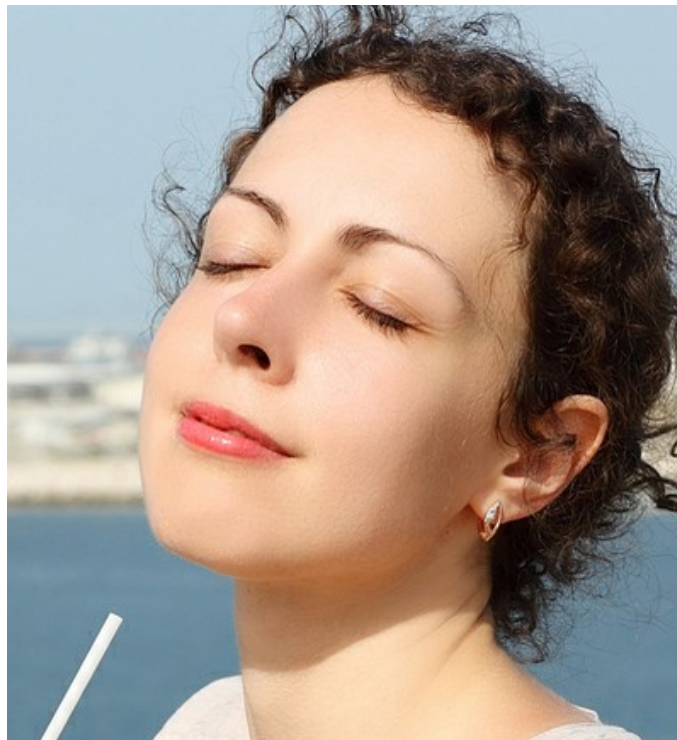
Fragment of the Original Image

After Smoothing

Step 3. During the second phase of work a glamorous look will be created using the [correction parameters](#). To access them, switch to **Advanced** mode, click on the **Correction** tab, and adjust the settings.



Correcting the Image in AKVIS MakeUp
Step 4. Process the entire image by pressing .



Final Result

AKVIS PROGRAMS

[AKVIS AirBrush — Airbrushing Techniques on Your Photos](#)

AKVIS AirBrush automatically transforms a photograph into a work of art which looks like made with a special airbrush tool that sprays paints or inks. The software works as an artistic filter creating stylish colorful airbrush designs from images using chosen settings of photo-to-painting conversion. [More...](#)



[AKVIS Artifact Remover AI — JPEG-Compressed Image Restoration](#)

AKVIS Artifact Remover AI uses artificial intelligence algorithms to remove JPEG compression artifacts and restore the quality of compressed images. This program provides 4 image enhancement modes, each involves a unique neural network developed especially for this occasion. The software is available free of charge for home users. For commercial use, a Business license is offered. [More...](#)



[AKVIS ArtSuite — Frames and Effects for Your Photos](#)

AKVIS ArtSuite is an impressive collection of versatile frames and effects for photos. ArtSuite contains many templates and texture samples that can be used to create a virtually limitless variety of options for generating frames. Decorate a photo to give it an original and festive look! [More...](#)



AKVIS ArtWork — Collection of Painting & Drawing Techniques

AKVIS ArtWork is photo to painting software designed to imitate different artistic techniques: *Oil Painting*, *Watercolor*, *Gouache*, *Comics*, *Pen & Ink*, *Linocut*, *Stencil*, *Pastel*, and *Pointillism*. ArtWork helps you to create a piece of art out of any picture! [More...](#)



AKVIS Chameleon — Photo Collage Creation

AKVIS Chameleon is a fun to use tool for photo collage creation. It makes the process easy and entertaining. The tool is very easy to handle as it does not require precise selection of objects. Using the software you can quickly create your own photo collages. [More...](#)



AKVIS Charcoal — Charcoal & Chalk Drawings

AKVIS Charcoal is a creative tool for conversion of photos into charcoal and chalk drawings. Using the program you can make professional-looking expressive black and white images. Playing with colors and options you can achieve outstanding artistic effects, such as sanguine and others. [More...](#)



AKVIS Coloriage — Add Color to Black and White Photos

AKVIS Coloriage allows colorizing B&W photos and replacing colors in color images, performing selective colorization and desaturation. It helps to breathe new life into your old family photographs, bring a vintage or artistic appearance to your digital images. [More...](#)



AKVIS Decorator — Resurface and Recolor

AKVIS Decorator lets you change the surface of an object in a realistic manner. The program puts on a texture keeping the volume of an object, following its folds and creases. The new pattern looks absolutely natural and makes you see things differently. Recoloring is also made easy. [More...](#)



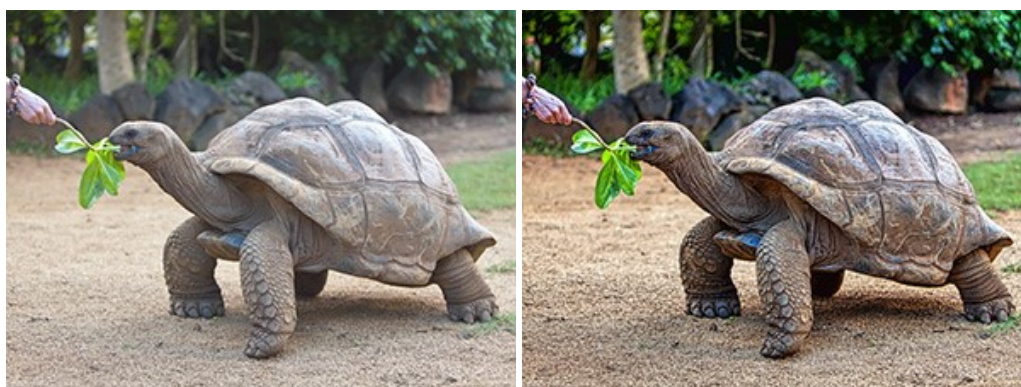
AKVIS Draw — Hand-made Pencil Drawing Effect

AKVIS Draw converts your photos into hand made pencil drawings. The software creates realistic looking line art illustrations, produces both B&W and color drawings. Add a hand-drawn look to your pictures! [More...](#)



AKVIS Enhancer — Bring Detail To Your Pictures

AKVIS Enhancer is image enhancement software that detects detail in underexposed, overexposed and mid tone areas of a photo with uneven exposure. Enhancer improves every part of the image! The software works in three modes: *Improve Detail*, *Prepress*, and *Tone Correction*. The program offers a fast method to fix a dark photo, add contrast and brightness to a picture, it lets you improve color and adjust tones. [More...](#)



AKVIS Explosion — Fabulous Particle Explosion Effects

AKVIS Explosion offers creative destruction and particle explosion effects for your photos. It bursts an object and applies dust and sand particles to an image. With the software, you can create eye-catching graphics in just a few minutes! [More...](#)



AKVIS Frames — Decorate Your Photos with Frames

AKVIS Frames is a free program designed for working with the [AKVIS frame packs](#)



AKVIS HDRFactory — High Dynamic Range Images: Brighter than Reality!

AKVIS HDRFactory lets you create a High Dynamic Range image from a series of shots or from one single photo. The program can also be used for photo correction. The program brings life and color to your photos! [More...](#)



AKVIS Inspire AI — Artistic Stylization of Images

AKVIS Inspire AI stylizes images using various samples of painting. The AI-based program applies the color scheme and style of a selected artwork to a photo creating a new masterpiece. The software includes a gallery of art styles and allows to load a custom sample. Imitate the style of world famous artists! [More...](#)



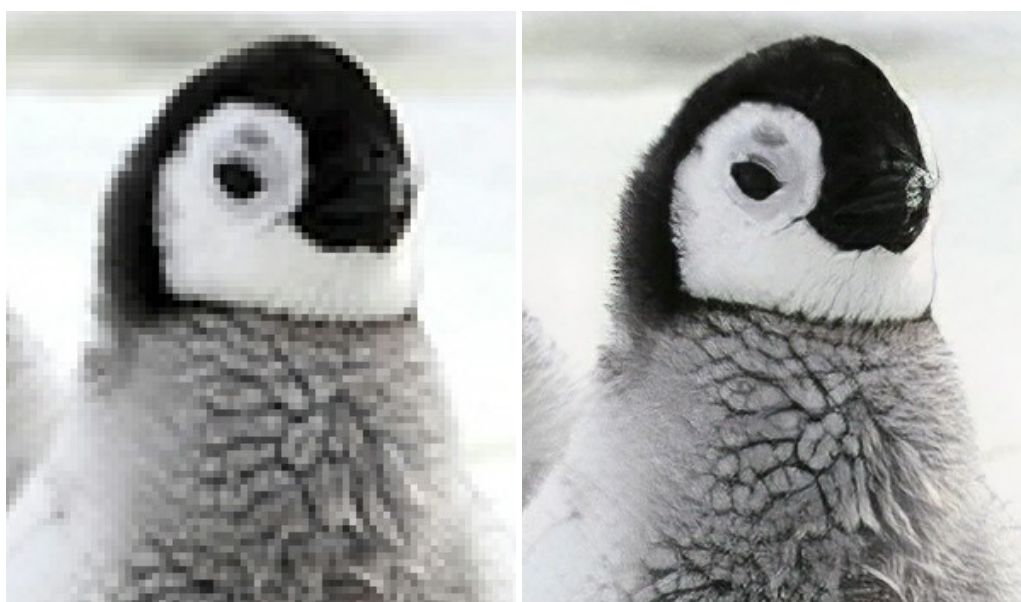
AKVIS LightShop — Light and Star Effects

AKVIS LightShop lets you create an infinite number of astounding light effects! The program offers advanced lighting techniques for adding stars and glow effects to images. A light effect draws attention and brighten up any photo. Add a little magic to your pictures! [More...](#)



AKVIS Magnifier AI — Enlarge Images & Enhance Quality

AKVIS Magnifier AI allows you to increase the size of photos and improve image quality and appearance. Featuring neural network-based algorithms, Magnifier AI upscales images to super-high resolution, up to 800%, and produces wall-sized prints. Improve image resolution, create clear, detailed images with perfect quality! [More...](#)



AKVIS MakeUp — Retouch Your Portrait Photos!

AKVIS MakeUp improves your portraits giving them a professional look. The software retouches facial imperfections making your skin radiant, beautiful, pure and even. The program adds glamour to your pictures and creates a high key effect. Look your best in every photo with AKVIS MakeUp! [More...](#)



AKVIS NatureArt — Bring Nature to Your Photos

AKVIS NatureArt is an excellent tool for imitating the magnificence of natural phenomena on your photos. The program includes a number of effects: [Rain](#)



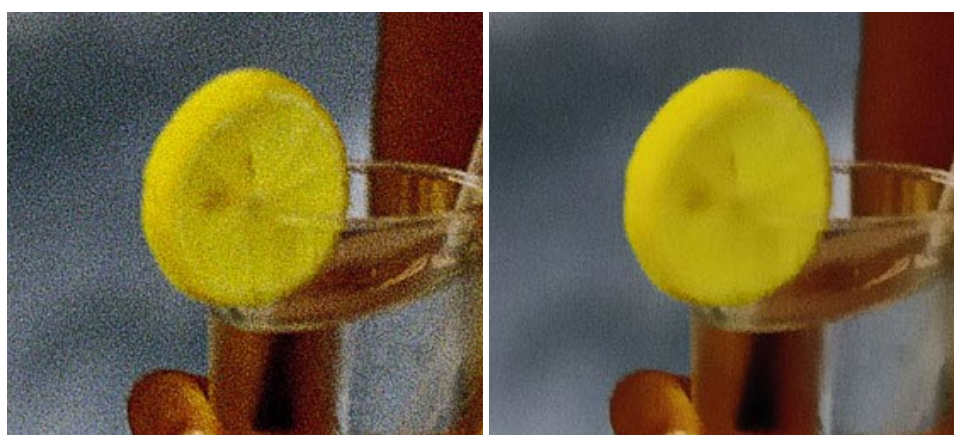
AKVIS Neon — Glowing Drawings from Photos

AKVIS Neon lets you create amazing glowing lines effects. The software transforms a photo into a neon image that looks like drawn with luminescent ink. [More...](#)



AKVIS Noise Buster AI — Digital Noise Reduction

AKVIS Noise Buster AI is software for noise suppression on digital and scanned images. The program is efficient for removing any type of digital noise. It reduces both luminance and color noise without spoiling other aspects of photos. The software includes AI technologies and adjustments for manual refining. [More...](#)



AKVIS OilPaint — Oil Painting Effect

AKVIS OilPaint turns your photos into oil paintings. The mysterious production of a painting happens right before your eyes. The unique algorithm authentically reproduces the technique of the real brush. With this cutting-edge software you can become a painter! [More...](#)



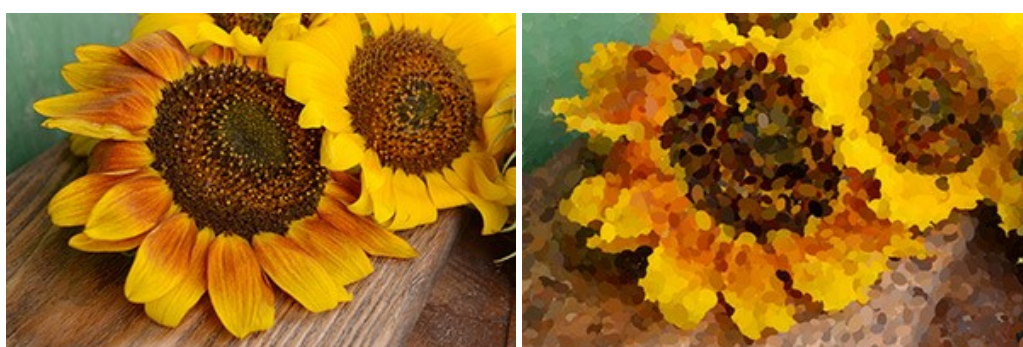
AKVIS Pastel — Turn Photos into Pastel Paintings

AKVIS Pastel turns your photos into pastel paintings. The program converts your photo into a lifelike digital art imitating one of the most popular artistic techniques. AKVIS Pastel is a powerful tool to unleash your creativity! [More...](#)



[AKVIS Points — Apply Pointillism Effect to Your Photos](#)

AKVIS Points lets you transform your photos into paintings using one of the most exciting artistic techniques - pointillism. With the software you can easily create gorgeous works of art in a pointillist manner. Discover the world of bright colors! [More...](#)



[AKVIS Refocus AI — Focus Improvement & Blur Effects](#)

AKVIS Refocus AI improves the sharpness of out-of-focus and blurry photos, enhances the entire image or partially, creating a selectively focused area. It's also possible to add bokeh and lens blur effects to your photos. The program provides five image processing modes: *Refocus AI*, *Tilt-Shift*, *Iris Blur*, *Motion Blur*, and *Radial Blur*. [More...](#)



[AKVIS Retoucher — Image Restoration Software](#)

AKVIS Retoucher is an efficient program for photo restoration and photo retouching. The software removes dust, scratches, stains, and other defects that appear on damaged photos. It intelligently reconstructs the missing parts of the photo using the information of the surrounding areas. [More...](#)



[AKVIS Sketch — Turn Your Photos into Pencil Sketches](#)

AKVIS Sketch converts photos into amazing pencil drawings. The software creates realistic color artworks and B&W sketches, imitating the technique of graphite and color pencil. The program offers these photo to drawing conversion styles: *Classic*, *Artistic*, *Maestro*, and *Multistyle*, - each with a series of presets. AKVIS Sketch allows you to feel like a real artist! [More...](#)



[AKVIS SmartMask — Save Time on Complex Selections!](#)

AKVIS SmartMask is an efficient selection tool that saves time and is fun to use. Selection has never been so simple! The software considerably increases your productivity. You will be freed from boring work and will have more room for creativity and realization of your ideas. [More...](#)



[AKVIS Watercolor — Aquarelle Art from Photos](#)

AKVIS Watercolor easily makes a photo look like a brilliant and vibrant watercolor painting. The program includes two styles of photo to painting conversion: *Classic Watercolor* and *Contour Watercolor*; each comes with a wide range of ready-to-use presets. The software turns ordinary images into aquarelle pieces of art. [More...](#)

