



Draw

Pencil Drawing Effect



CONTENTS

- [Field of Application](#)
- [Installation on Windows](#)
- [Installation on Mac](#)
- [Installation on Linux](#)
- [Activation](#)
- [How It Works](#)
 - ◊ [Workspace](#)
 - ◊ [Using the Program](#)
 - ◊ [Effect Parameters](#)
 - ◊ [Canvas](#)
 - ◊ [Frame](#)
 - ◊ [Text & Watermark](#)
 - ◊ [Presets](#)
 - ◊ [Preferences](#)
 - ◊ [Batch Processing](#)
 - ◊ [Print Image](#)
- [Examples](#)
 - ◊ [Pencil Drawings Gallery](#)
 - ◊ [Pencil Drawings Gallery II](#)
 - ◊ [Drawings in the Margins](#)
- [AKVIS Programs](#)

AKVIS DRAW 10.0 | HAND-MADE PENCIL DRAWING EFFECT

AKVIS Draw lets you create hand drawn pencil sketches and line art pictures from your digital photos!

The program makes sketches very close to the technique of a real drawing.

AKVIS Draw is incredibly easy to use; it makes a realistic looking drawing effect in just one click! Load your image into the program and adjust settings to generate an artwork. The software creatively produces pencil strokes imitating an artist's view.



Equipped with the ready-to-use **Presets** and adjustable **Parameters**, the program renders various esquisse drawing styles. Besides creating black and white sketches, the software also lets you make color drawings. The functionality of the program provides inexhaustible possibilities for creativity.



The program offers the fastest way to convert a photo into a drawing. The result of automatic conversion can compete with the work of a real artist. For more flexibility, the program allows editing the drawing with the eraser and pencil tools. You can quickly remove extra lines, soften too sharp strokes, and add some finishing touches to your sketch.

Give a hand-drawn look to your pictures with **AKVIS Draw**!



Create amazing additional effects by merging the original image and the result. Play with the **Blend Mode** settings to let the photo show through the drawing. You can give your image a "comics" look or achieve a watercolor pencil effect. Using the effect area tools, you can limit an area of an image to be processed and create an exciting combination of photo and drawing.



To make your pencil sketch even more impressive, switch to the **Decoration** (Canvas/Frame/Text) tab and put your pencil drawing to a textured surface, apply a frame to your picture, and add a signature to your work of art.

The software supports the **Batch Processing** feature that lets you turn all your photos into a sketchbook or a storyboard within just minutes.

AKVIS Draw can be used to create an authentic pencil sketch or as one of the stages for preparing a work of art, in combination with other AKVIS programs: **ArtWork**, **OilPaint**, **Pastel**, **Charcoal**, etc.

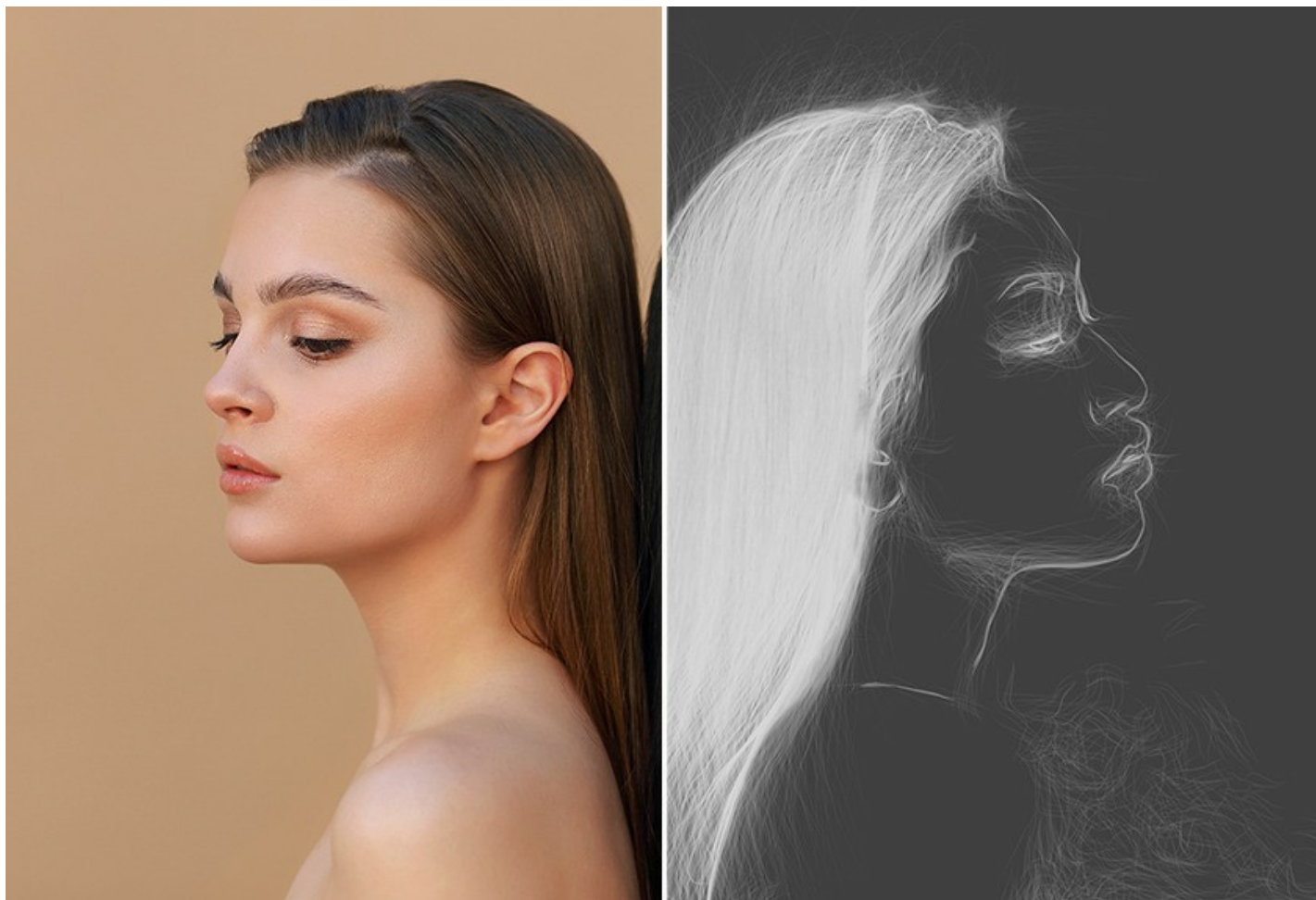


AKVIS Draw is available as a standalone application and as a plugin to a photo editor. A [license](#) defines the edition and functionality of the software.

- *Standalone* is an independent program that can be run by clicking on its icon.

- *Plugin* is an additional filter effect, intended to be installed into a photo editor, to increase its functionality: [AliveColors](#), Adobe Photoshop, Corel PaintShop Pro, or other [compatible programs](#).

Take advantages of a free trial period and create variations of pencil art from your photos!



During the trial period you can try all options and choose the license you like.

INSTALLATION ON WINDOWS

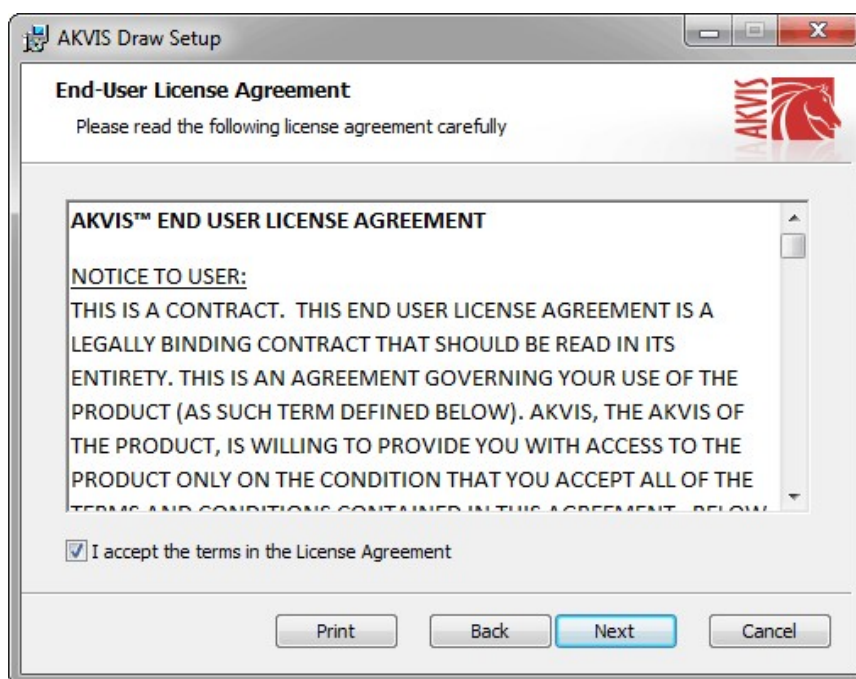
Please find instructions below on how to install the AKVIS programs on Windows.

You must have administrator rights to install the program on your computer.

Before installing the AKVIS plugins, please make sure that the image editor where you want to install the plugins, is closed. Or re-run the image editor after the installation of the plugin.

1. Run the setup **exe** file.
2. Select your language and press the **Install** button.
3. To continue the installation process you have to read and accept the **End User License Agreement**.

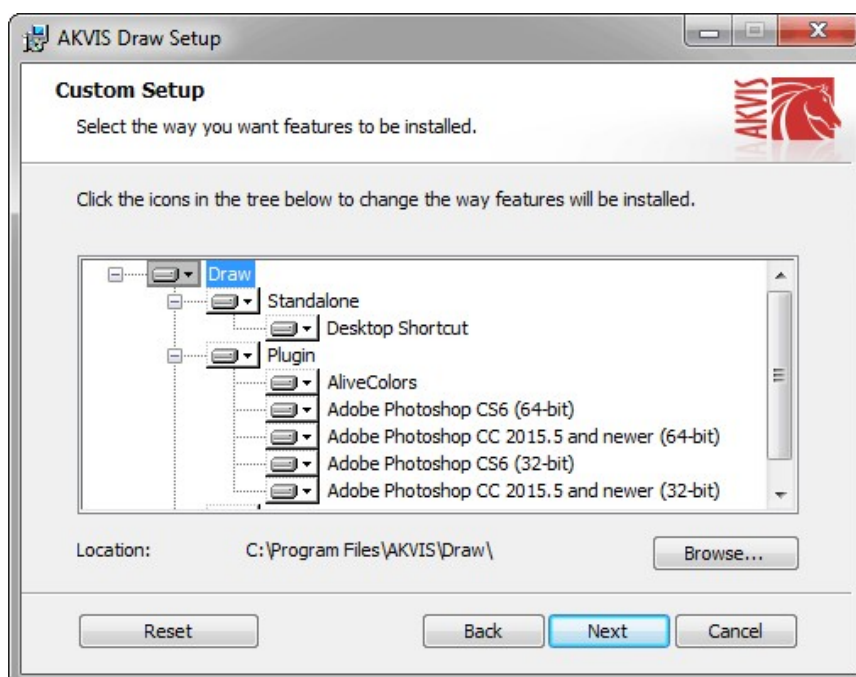
Activate the check box **"I accept the terms in the License Agreement"**, and press **Next**.



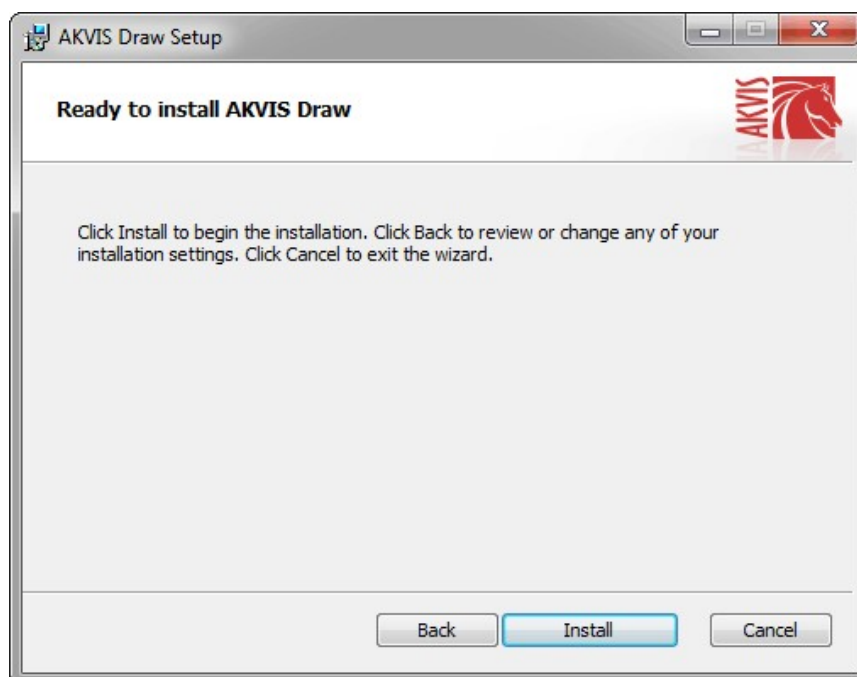
4. To install the **Plugin**, select your photo editor(s) from the list.

To install the **Standalone** version, make sure that the corresponding option is activated.
To create a shortcut for the program on desktop, activate **Desktop Shortcut**.

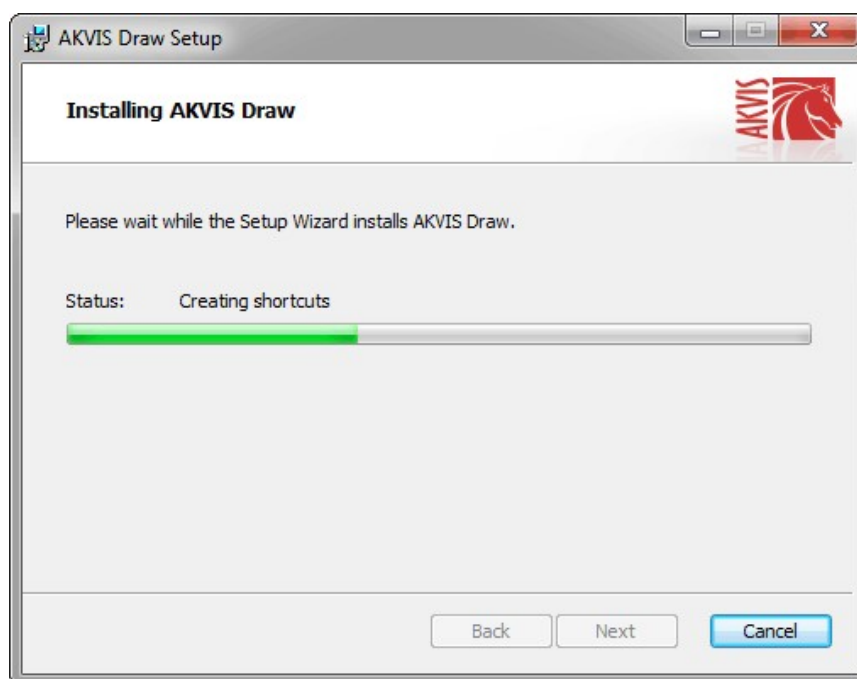
Press **Next**.



5. Press the **Install** button.

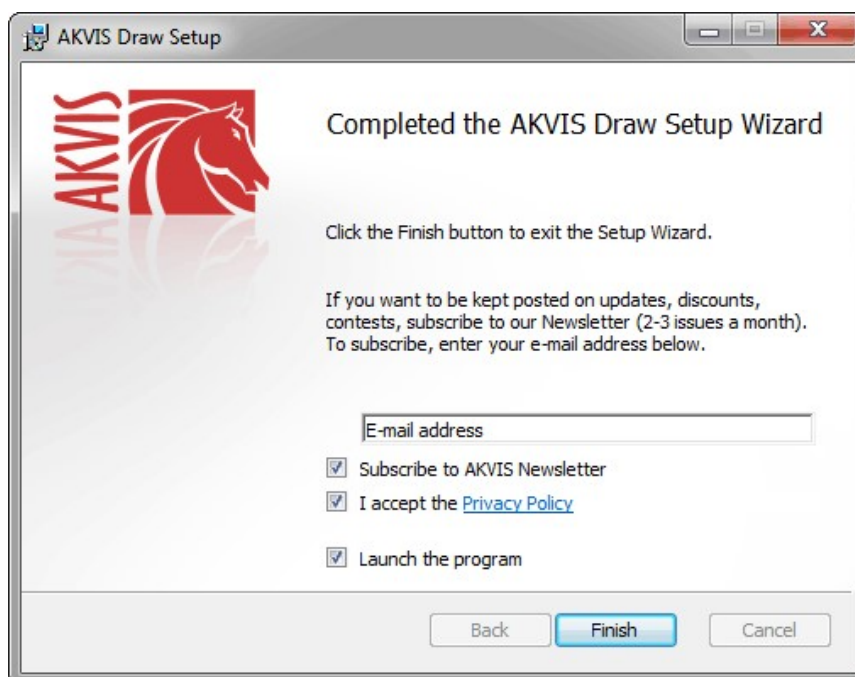


6. The installation is in progress.



7. The installation is completed.

You can subscribe to the **AKVIS Newsletter** to be informed about updates, events, and special offers. Enter your e-mail address and confirm that you accept the Privacy Policy.



8. Press **Finish**.

After installation of the **standalone** version, you will see the program name in the **Start** menu and a shortcut on the desktop, if during installation the corresponding option was enabled.

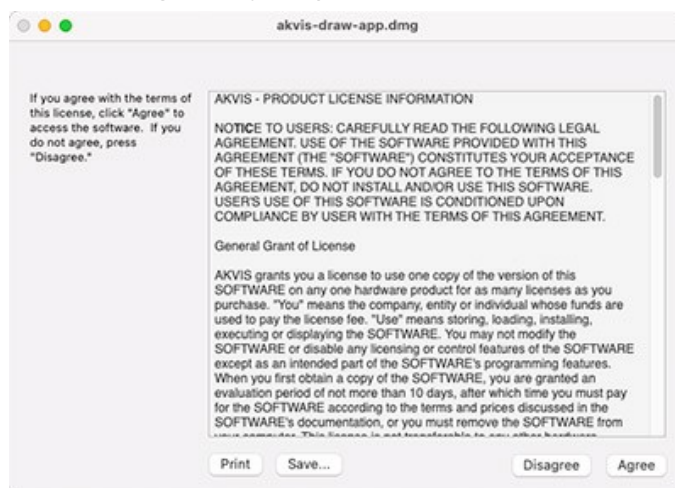
After installation of the **plugin**, you will see a new item in the **Filter/Effects** menu of your photo editor. For example in **Photoshop**: **Filter -> AKVIS -> Draw**, in **AliveColors**: **Effects -> AKVIS -> Draw**.

INSTALLATION ON MAC

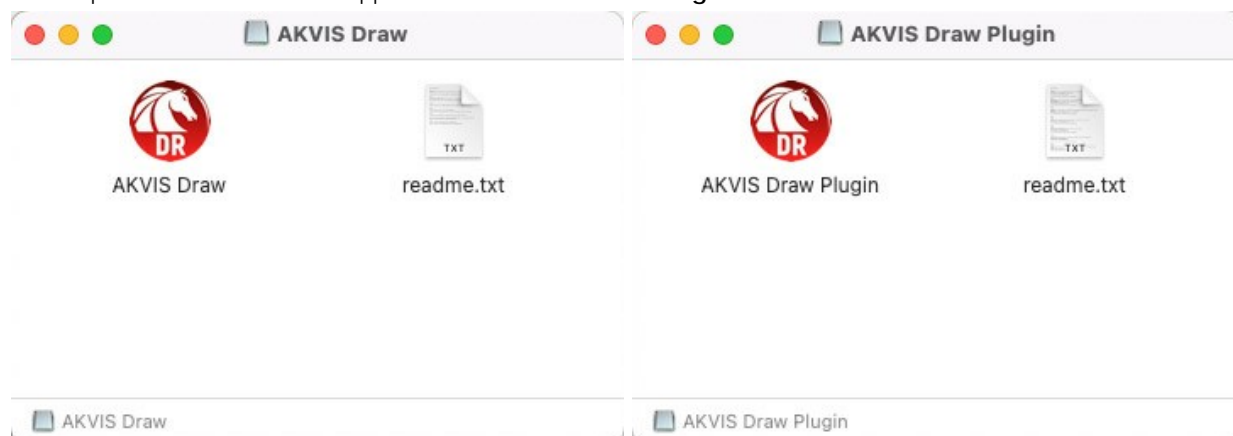
Follow the instructions to install the AKVIS software on a Mac computer.

You must have administrator rights to install the program on your computer.

1. Open the **dmg** file:
 - **akvis-draw-app.dmg** to install the **Standalone** version
 - **akvis-draw-plugin.dmg** to install the **Plugin** into your image editor.
2. Read the **License Agreement** and press **Agree**, if you agree with the conditions.



3. **Finder** will open with **AKVIS Draw** application or **AKVIS Draw PlugIn** inside.



4. To install the **Standalone** version, drag the **AKVIS Draw** app into the folder **Applications** (or any other place you like).

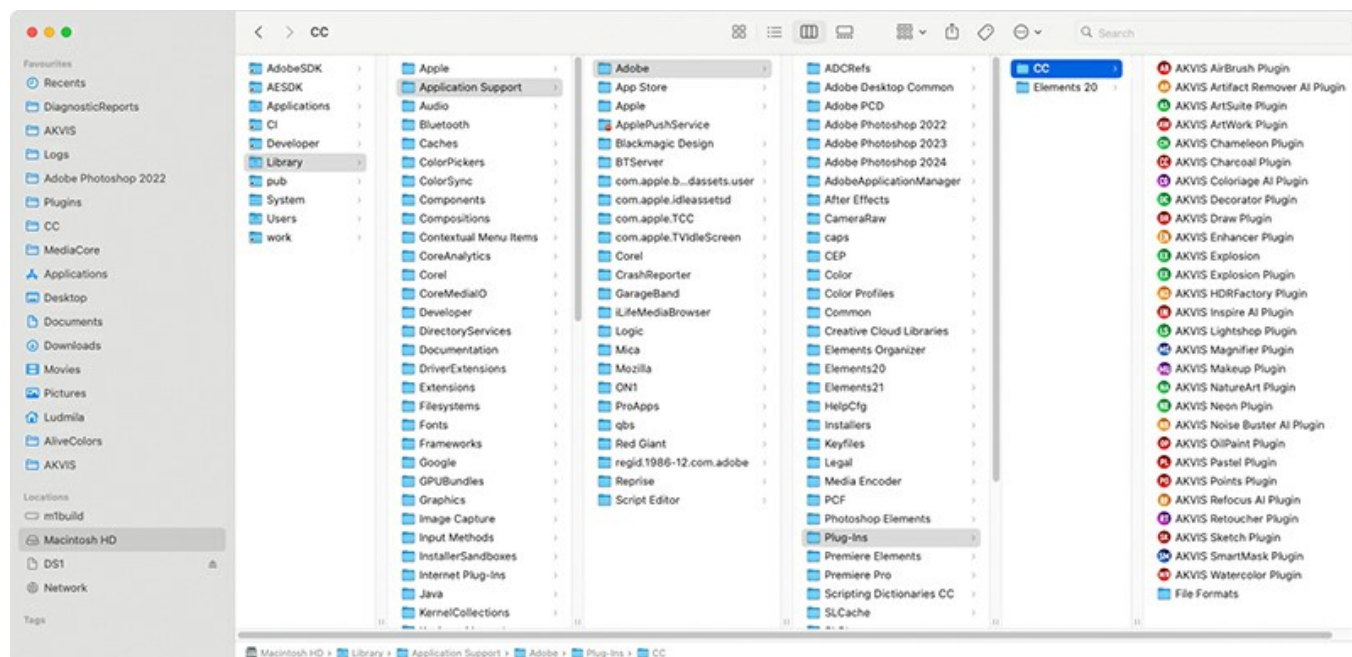
To install the **Plugin**, drag the entire **AKVIS Draw PlugIn** folder into the **Plug-Ins** folder of your graphic editor:

AliveColors: You can choose in the **Preferences** the folder of the plugins.

Photoshop CC 2023, CC 2022, CC 2021, CC 2020, CC 2019, CC 2018, CC 2017, CC 2015.5: Library/Application Support/Adobe/Plug-Ins/CC;

Photoshop CC 2015: Applications/Adobe Photoshop CC 2015/Plug-ins;

Photoshop CS6: Applications/Adobe Photoshop CS6/Plug-ins.



AKVIS Plugins on Mac
(click to enlarge)

After installation of the **plugin**, you will see a new item in the filters/effects menu of your photo editor. Select in **Photoshop: Filter -> AKVIS -> Draw**, in **AliveColors: Effects -> AKVIS -> Draw**.

Run the **standalone** application by double-clicking on its icon in **Finder**.

You can also run the AKVIS programs from the **Photos** app by choosing the **Image -> Edit With** command (in High Sierra and later versions of macOS).

INSTALLATION ON LINUX

Note: The AKVIS programs are compatible with **Linux kernel 5.0+ 64-bit**. You can find out the kernel version using the **uname -srm** command.

Follow the instructions to install the AKVIS software on a Linux computer.

Installation on **Debian**-based systems:

Note: You need apt-install or apt-get permissions required to install software.

1. Run the terminal.
2. Create a directory to store keys:

```
sudo mkdir -p /usr/share/keyrings
```

3. Download the key that signed the repository:

```
curl -fsSL https://akvis.com/akvis.gpg | sudo tee /usr/share/keyrings/akvis.gpg >/dev/null
```

or

```
wget -O - https://akvis.com/akvis.gpg | sudo tee /usr/share/keyrings/akvis.gpg >/dev/null
```

4. Add the repository to the list where the system looks for packages to install:

```
echo 'deb [arch=i386 signed-by=/usr/share/keyrings/akvis.gpg] https://akvis-deb.sfo2.cdn.digitaloceanspaces.com akvis non-free' | sudo tee /etc/apt/sources.list.d/akvis.list
```

5. Update the list of known packages:

```
sudo apt-get update
```

6. Install AKVIS Draw

```
sudo apt-get install akvis-draw
```

7. The installation is completed.

Launch the program via the terminal or using the program shortcut.

8. For automatic updates, use the command:

```
sudo apt-get upgrade
```

To remove the program:

```
sudo apt-get remove akvis-draw --autoremove
```

Installation on **RPM**-based systems (**CentOS**, **RHEL**, **Fedora**):

1. Run the terminal.
2. Register the key that signed the repository:

```
sudo rpm --import https://akvis.com/akvis.asc
```

3. Add the repository to the system:

```
sudo wget -O /etc/yum.repos.d/akvis.repo https://akvis.com/akvis.repo
```

4. Update the package list:

when using the **dnf** package manager:

```
sudo dnf update
```

when using the **yum** package manager:

```
sudo yum update
```

5. Install AKVIS Draw:

when using the **dnf** package manager:

```
sudo dnf install akvis-draw
```

when using the **yum** package manager:

```
sudo yum install akvis-draw
```

6. The installation is completed.

Launch the program via the terminal or using the program shortcut.

7. For automatic updates:

when using the **dnf** package manager:

```
sudo dnf upgrade
```

when using the **yum** package manager:

```
sudo yum upgrade
```

8. To remove the program:

when using the **dnf** package manager:

```
sudo dnf remove akvis-draw
```

when using the **yum** package manager:

```
sudo yum remove akvis-draw
```

Installation on **openSUSE**.

1. Run the terminal.
2. Login as a root user.
3. Add the key that signed the repository:

```
rpm --import http://akvis.com/akvis.asc
```

4. Add the repository to the system:

```
zypper ar -r https://akvis.com/akvis.repo akvis
```

5. Update the package list:

```
zypper ref
```

6. Install AKVIS Draw:

```
zypper install akvis-draw
```

7. The installation is completed.

Launch the program via the terminal or using the program shortcut.

8. For automatic updates:

```
zypper update
```

To remove the program:

```
zypper remove akvis-draw
```

Installation using **Flatpak**:

1. Run the terminal.
2. Add the Flathub repository

```
sudo flatpak remote-add --if-not-exists flathub https://flathub.org/repo/flathub.flatpakrepo
```

3. Add the AKVIS repository

```
sudo flatpak remote-add --if-not-exists akvis --from https://akvis-  
flatpak.sfo3.cdn.digitaloceanspaces.com/com.akvis.flatpakrepo
```

4. Install AKVIS Draw:

```
sudo flatpak install -y akvis com.akvis.akvis-draw
```

5. The installation is completed.

Launch the program using the program shortcut or the terminal:

```
flatpak run com.akvis.akvis-draw
```

6. To update all installed flatpaks, use the command:

```
sudo flatpak update -y
```

to remove the program:

```
sudo flatpak remove -y com.akvis.akvis-draw
```

In order to display the program interface correctly, it is recommended to install the Compton or Picom composite manager.


AKVIS SOFTWARE ACTIVATION

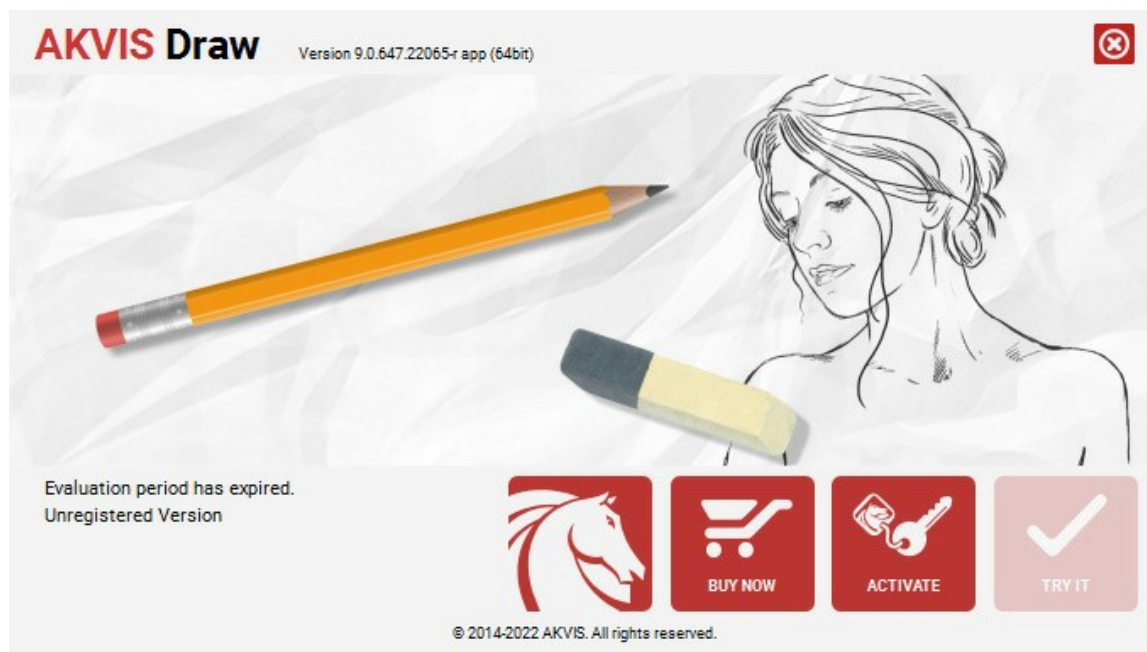
Attention! During the activation process your computer must be connected to Internet.

If it is not possible, we offer you an alternative way ([see below for Offline Activation](#)).

Download [AKVIS Draw](#) and install the program. [Read the Installation Instruction here](#).

When you run the unregistered version, a splash window will appear displaying general information about the version and the number of days left in your trial period.

You can also open the **About the Program** window by pressing the button  in the program's Control Panel.



Click on **TRY IT** to evaluate the software. A new window will appear with variants of licenses to test.

You do not need to register the trial version to try all features of the software. Just use the program during the evaluation time (10 days after the 1st start).


During the test period you can try all options and choose the license you like. Select one of the offered functionality types: **Home** (Plugin or Standalone), **Home Deluxe**, or **Business**. Your choice of license will affect which features will be available in the program. [Consult the comparison table](#) for more details about license types and versions of the software.

If the trial period has expired, the **TRY IT** button is disabled.

Click on **BUY NOW** to choose a license to order.

When the payment is effected, your serial number for the program will be sent to you within minutes.

Click on **ACTIVATE** to start the activation process.



AKVIS Draw Version 9.0.647.22065-r app (64bit)

ACTIVATION

Customer Name:

Serial Number (Key):

☒ **Direct connection to the activation server**

☐ **Send a request by e-mail**

Lost your serial number? [Restore it here.](#)

Activation problems? [Contact us.](#)

[Copy HWID.](#)

ACTIVATE **CANCEL**

© 2014-2022 AKVIS. All rights reserved.

Enter your name (the program will be registered to this name).

Enter your serial number (your license key).

Choose the method of activation — either direct connection to the activation server or by e-mail.

Direct connection:

We recommend activating the program using direct connection, as it is the easiest way.

At this step your computer must be connected to Internet.

Press **ACTIVATE**.

Your registration is completed!

Request by e-mail:

In case you have chosen activation by e-mail, a message with all necessary information will be created by the program.

NOTE: You can also use this method for **Offline Activation**:

If your computer is not connected to Internet, transfer the activation message to a computer connected to Internet, for example, with a USB stick. Send us this information to: activate@akvis.com.

Please do not send the screenshot! Just copy the text and save it.

We need your serial number for the software, your name, and HardwareID (HWID) of your computer.

We will generate your license file (**Draw.lic**) using this information and will send it to your e-mail address.

Save the **.lic** file (do not open it!) to your computer where you want to register the software, in the **AKVIS** folder in Users' Shared (Public) Documents:

♦ Windows:

C:\Users\Public\Documents\AKVIS

(This PC > Local Disk (C:) > Users > Public > Documents > AKVIS)

♦ Mac:

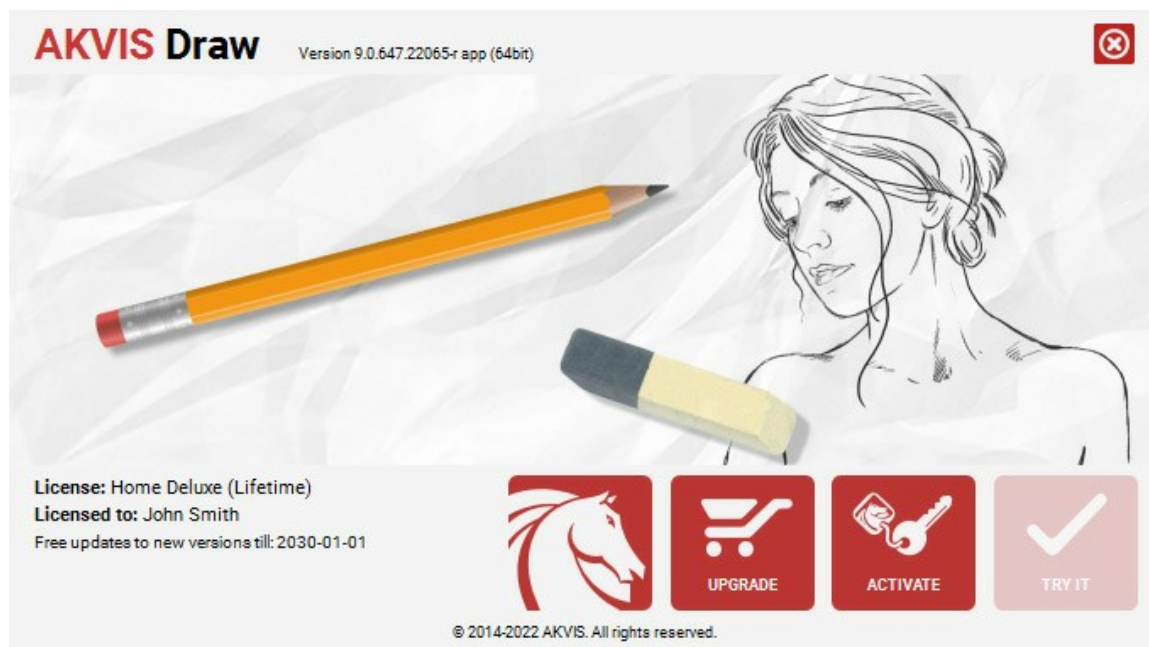
/Users/Shared/AKVIS

Open the **Finder**, select the **Go** menu, then select **Go to Folder...** (**⌘**+**Shift**+**G**), type **"/Users/Shared/AKVIS"**, and click **Go**.

♦ Linux:

/var/lib/AKVIS

Your registration is completed!



When the program is registered, **BUY NOW** turns to **UPGRADE** that lets you improve your license (for example, change **Home** to **Home Deluxe** or **Business**).

WORKSPACE

AKVIS Draw can work independently as a *standalone* program as well as a *plugin* to a photo editor.

Standalone is an independent program. You can run it in the usual way.

Plugin is an add-on for graphics editors, for example for Photoshop, AliveColors, and other [compatible programs](#). To call the plugin, [select it from filters](#) of your image editing program.

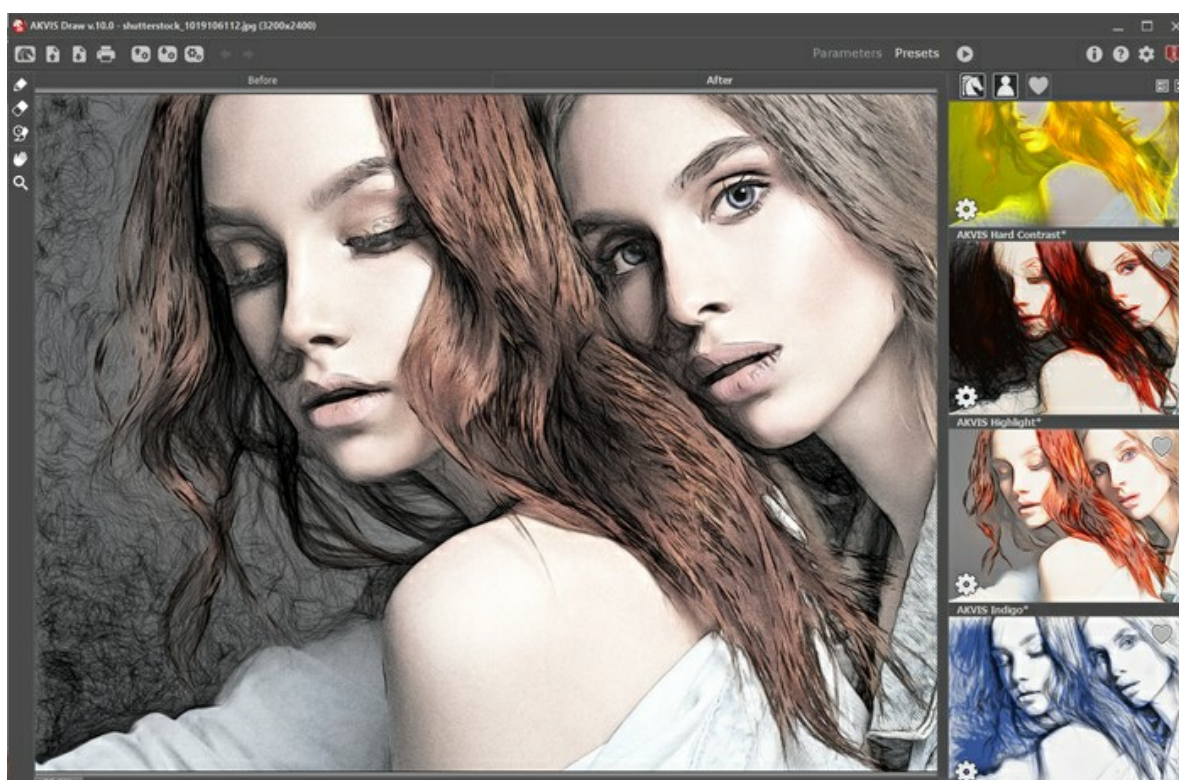
The workspace is arranged according to the chosen interface mode: **Parameters** or **Presets**.

In the **Parameters** mode, the standard program window is visible. In this mode, you can adjust the effect settings in the right panel as well as choose presets from the drop-down list.




AKVIS Draw Workspace (Parameters Mode)


Click **Presets** in the top panel to switch to the presets visual display mode. The presets can be shown in the right panel or on the entire window ([Presets Gallery](#)).




The left part of the **AKVIS Draw** window is taken by the image window with two tabs: **Before** and **After**. In the **Before** tab you can see the original photo. The **After** tab shows the resulting image. You can switch between the windows by left-clicking on the tab with mouse button. To compare the original image and the result, click on the image and hold the button pressed - the program will currently switch between tabs.


In the upper part of the program's window you can see the **Control Panel**.

The button  opens the home page of **AKVIS Draw**.


The button  (only in the standalone version) opens an image for processing. The hot-keys are **Ctrl+O** on Windows, **⌘+O** on Mac.


Right mouse click on this button displays the list of recent files. You can change the number of recent documents in the program's [preferences](#).



The button  (only in the standalone version) saves image to the disk. The hot-keys are **Ctrl+S** on Windows, **⌘+S** on Mac.

The button  (only in the standalone version) prints the image. The hot-keys are **Ctrl+P** on Windows, **⌘+P** on Mac.

The button  imports a list of user presets (from the **.draw** file).


The button  exports user presets. You can save any presets to a **.draw** file.


The button  (only in the standalone version) opens the **Batch Processing** dialog that lets you automatically convert a series of images.

The button  /  shows/hides the effect area outlines drawn with the tools.

The button  cancels the last operation with the post-processing tools (in the **After** tab).

It is possible to cancel several operations in a row. The hotkeys are **Ctrl+Z** on Windows, **⌘+Z** on Mac.

The button  returns the last cancelled operation. It is possible to return several operations in a row. The hotkeys are **Ctrl+Y** on Windows, **⌘+Y** on Mac.


The button  is used to start image processing if the **Autoran Mode** is disabled.

The button  (only in the plugin version) applies the result to the image and closes the plugin.

The button  shows information about the program, version and license.


The button  calls the **Help** files. The hot-key is **F1**.


The button  calls the **Preferences** dialog box.


The button  opens a window showing the latest news about Draw.


To the left of the main window there is the **Toolbar**. Different tools appear in the **Before/After** tabs.

Pre-Processing Tools (in the **Before** tab):

The button  (in the standalone program) activates the **Crop** tool. The tool lets you cut off unwanted areas in the image. The tool's options are visible in the Settings Panel.


Effect Area . Use the blue pencil to draw an outline within the areas that will be converted to a drawing.


No Effect Area . Use the red pencil to outline the parts of the image that will remain in their original state.

Eraser . Use this tool to edit the outlines drawn by the pencils.

Post-Processing Tools (in the **After** tab):


The button  activates the **Pencil** which lets you draw over the result.

The button  calls the **Eraser** tool that erases the pencil strokes.


The button  activates the **History Brush** tool which lets you fade the effect and restore the image to its original state (works under **Home Deluxe/Business** licenses only).

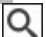
The options of the **Pencil**, **Eraser**, and **History Brush** are shown in a pop-up box which appears when right-clicking on the image.

Additional Tools:

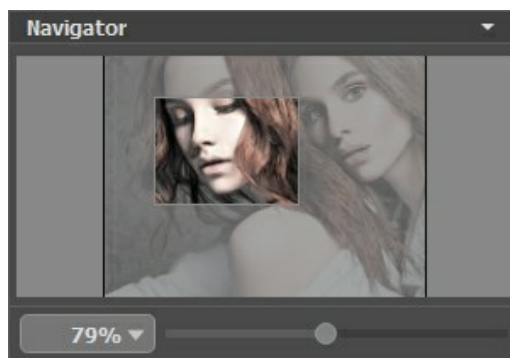
The button  activates the **Hand** tool (the hot-key is **H**) which lets you scroll the image when it does not fit within the window at the desired scale. Bring the cursor over the image, and while keeping the left mouse button pressed move in the desired direction.

Double-clicking on the tool's icon  makes the image fit the window.

The button  activates the **Zoom** tool (the hot-key is **Z**) which changes the image's scale. To zoom in click on the image. To zoom out click with **Alt**.

Double-clicking on the tool's icon  makes the image scale to 100% (actual size).

Navigate and scale the image using the **Navigator**. The frame in the **Navigator** surrounds the area of the image which is visible in the image window; the area outside of the frame will be shaded. The frame can be dragged, thereby changing the visible portion of the image. To move the frame, place the cursor within it, left click the mouse, and then drag.



Navigator

Use the slider to scale the image in the **Image Window**. When you move the slider to the right, the image scale increases. When you move the slider to the left, the image scale decreases.

To scroll the image in the main window you can press the spacebar on the keyboard and drag the image with the left mouse button. Use the scroll wheel of the mouse to move the image up/down, by keeping the **Ctrl** key pressed – to the left/to the right, by keeping the **Alt** key pressed – scale the image. Right-click on the scroll bar to activate the quick navigation menu.

You can also change the image scale by entering a new coefficient into the scale field. The fall-down menu shows some frequently used coefficients.

You can use hot-keys to change the image scale **+** and **Ctrl** + **+** (**⌘** + **+** in Mac) to increase the image scale and **-** and **Ctrl** + **-** (**⌘** + **-** in Mac) to reduce the scale.

Under the **Navigator** there is the **Settings Panel** with two tabs:

Drawing: Here you can adjust the parameters for photo to sketch conversion.

Decoration: You can add **text** to your image, adjust the **canvas**, and apply a **frame**.

Below, in the **Presets** field you can save the current settings as a preset to use them in the future. The current settings can be saved, edited, deleted. When you launch the program, it uses the settings of the last used preset.

The **Hints** field will help you to understand how to use the program. The description for the parameters and buttons appear when you hover over them with the cursor. You can choose where the hints will be shown or hide them in the program's preferences.


HOW TO USE THE PROGRAM

AKVIS Draw creates a work of art from a photo giving it a hand drawn look. The software is available in two versions: as a standalone (independent) program and as a Photoshop plug-in filter.

To make a pencil drawing out of a photo follow the instructions:

Step 1. Open an image.

- If you work with the standalone edition:

The dialog box **Select File to Open** appears if you double-click on the empty workspace of the program or if you click on the button . You can also use the hot-keys: **Ctrl+O** on Windows, **⌘+O** on Mac; or just drag the image into the workspace of the program.

The standalone version supports **JPEG, RAW, PNG, BMP, WEBP, and TIFF** file formats.

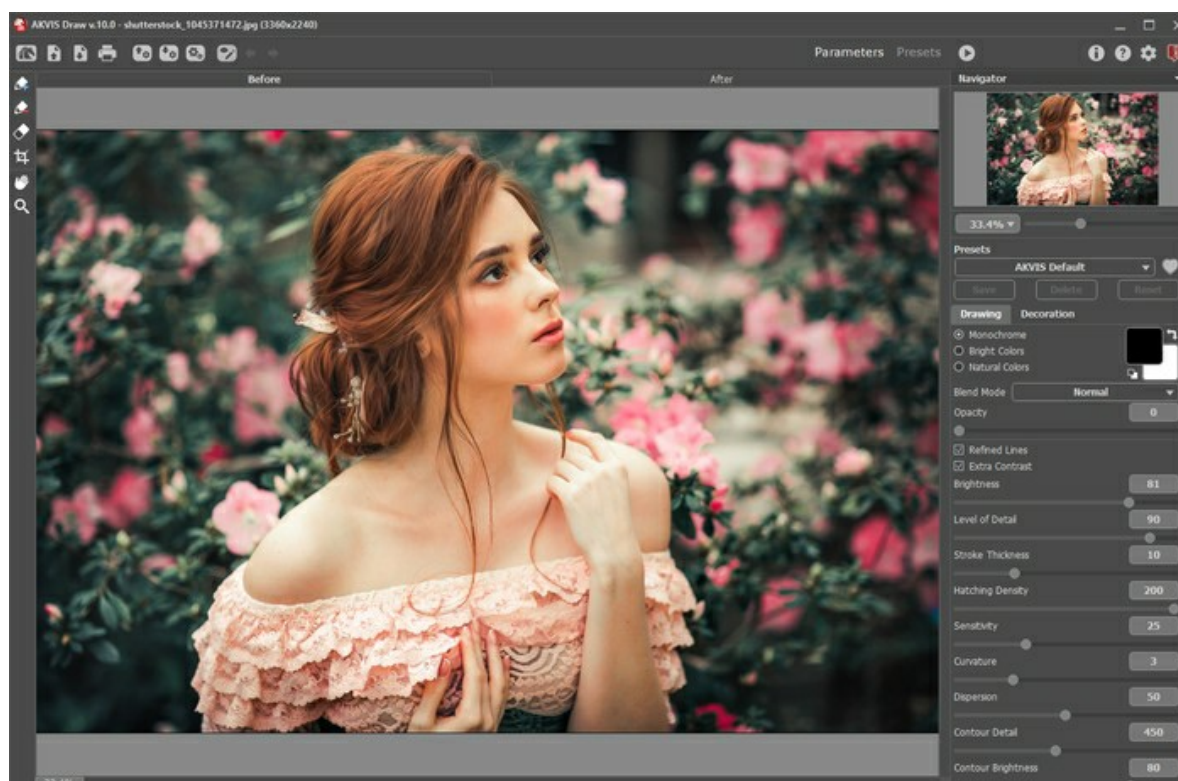
- If you work with the plugin:

Open an image in your photo editor by calling the command **File -> Open**.


Call the plugin from the menu of the editor:

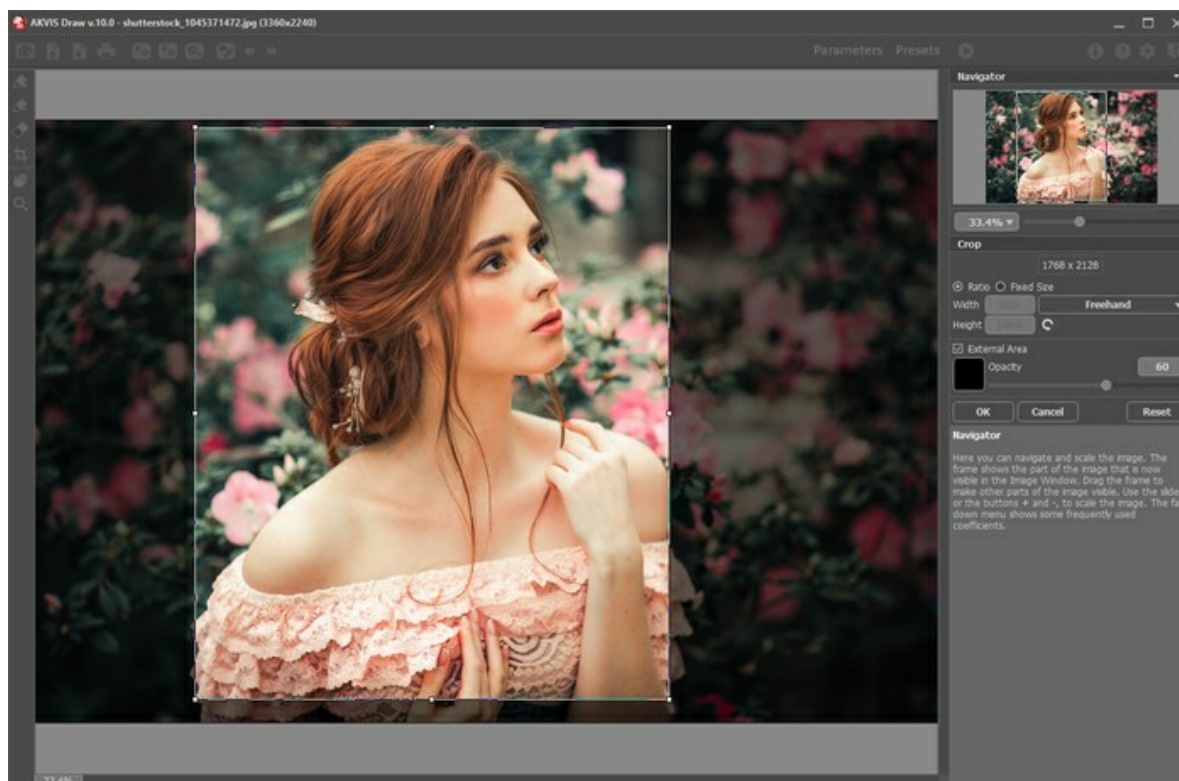
In **AliveColors**: Effects -> AKVIS -> Draw;
 in **Adobe Photoshop**: Filter -> AKVIS -> Draw;
 in **Corel PaintShop Pro**: Effects -> Plugins -> AKVIS -> Draw;
 in **Corel Photo-Paint**: Effects -> AKVIS -> Draw.

The workspace is arranged according to the chosen interface mode: [Parameters](#) or [Presets](#).



AKVIS Draw Window

Step 2. Before applying the effect, in the standalone version, you can use the **Crop** tool  to trim a part of the picture. If you use the plugin, you can do this in your image editor.




Crop Tool

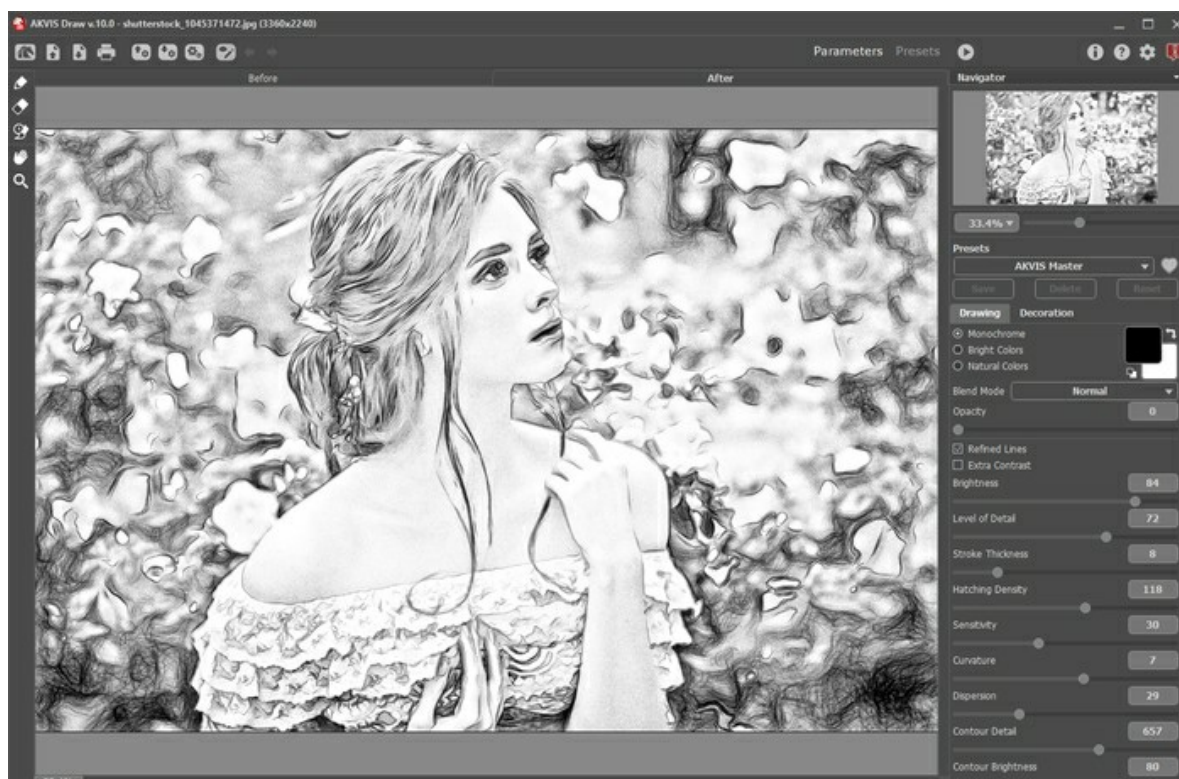
Step 3. Adjust the settings of the photo to sketch conversion in the **Drawing** tab.

You can apply one of the ready-to-use **presets** or change the parameters to your liking.



The result will be immediately shown in the **After** tab.

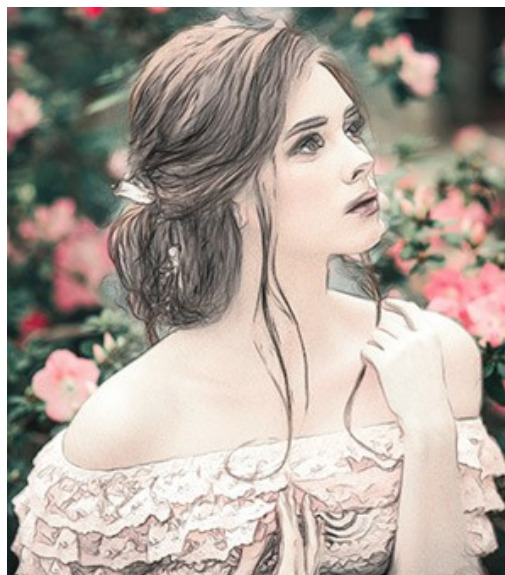
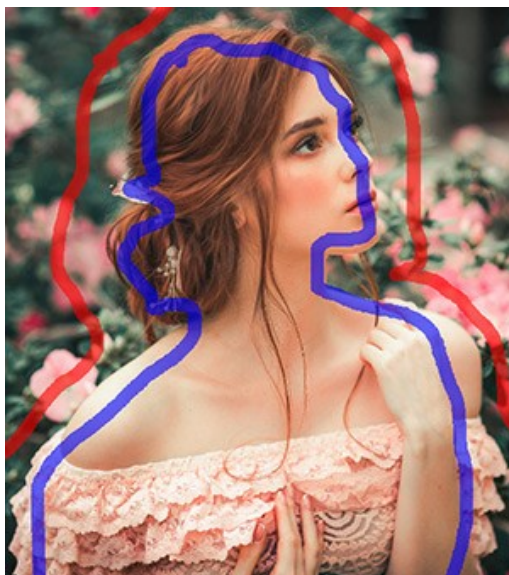
By default, the **Autorun Mode** is enabled: any changes are displayed automatically. You can disable this mode in the program's **Preferences**. Then you will have to press the button  each time to convert the image into a pencil sketch.

You can interrupt the process by clicking on the **Cancel** button right to the progress bar.



Convert the image into a pencil sketch

You can process only certain areas using the tools  and .



Define the effect area

Effect Area . Use the blue pencil to draw an outline within the areas that will be converted to a drawing.

No Effect Area . Use the red pencil to outline the parts of the image that will remain in their original state.

Eraser . Use this tool to edit the outlines drawn by the pencils. The tool can operate in three different modes:

- Erase all strokes;
- Erase only red strokes;
- Erase only blue strokes.

Adjust the **Size** of the tools in a pop-up box that appears when right-clicking in the image.

Step 4. You can edit your drawing with the post-processing tools - **Pencil** , **Eraser** and **History Brush** in the **After** tab. The tools' options are shown in a pop-up box which appears after right-clicking on the image.

Attention! Use the post-processing tools at the final step! If you re-run processing with the new effect settings, the changes made with the tools will be lost.

The **History Brush** is only available for the [Home Deluxe and Business](#) licenses.



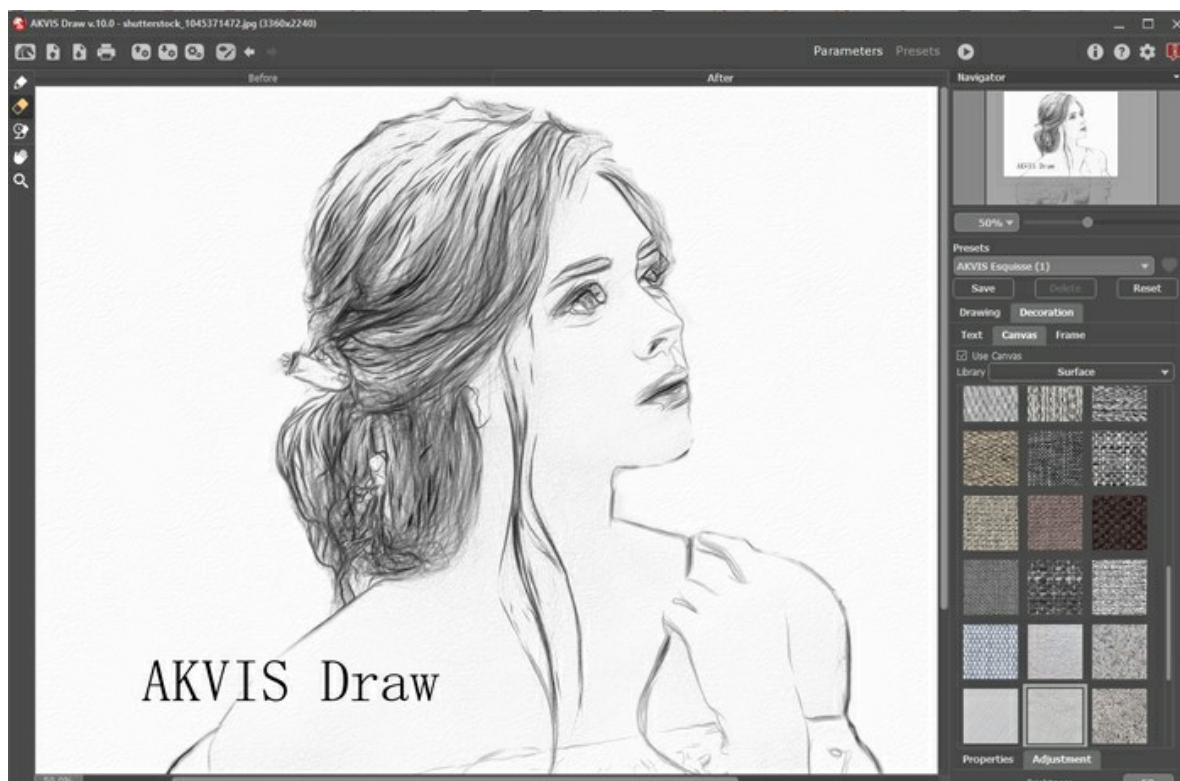
Processing Result





Using Eraser

Step 5. To make your drawing even more impressive, you can use the **Decoration** options: adjust the [canvas](#), apply a [frame](#), and add [text](#) to your image.


Hint: The order of the application of **Canvas/Frame/Text** depends on the position of the tabs. Drag the tabs to change the order.



Step 6. It is possible to save the settings you like as a **Preset** and use them in the future. A preset contains the settings of all tabs.


Click on a heart icon   near the preset name field to add the preset to **Favorites** or to remove it from this group of presets.

[Learn more about the Draw Presets.](#)

Step 7. In the standalone version, you can also [print](#) your picture with .


Step 8. Save the processed image.

- If you work with the standalone edition:

Click on the button  to open the **Save As** dialog box. You can use the hot-keys: **Ctrl+S** on Windows, **⌘+S** on Mac.

Enter a name for the file, choose the format (**TIFF**, **BMP**, **JPEG**, **WEBP** or **PNG**) and indicate the target folder.

- If you work with the plugin:

Press the button  to apply the result and close the plugin window. The **AKVIS Draw** plugin will close and the picture will appear in the workspace of the photo editor.

Call the **Save As** dialog box using the command **File -> Save As**, enter a name for the file, choose the format and indicate the target folder.



Result

PENCIL DRAWING EFFECT PARAMETERS

AKVIS Draw lets you make a hand drawn pencil sketch from your photo. The program creatively produces pencil strokes imitating an artist's view.



You can adjust the parameters for the photo to drawing conversion in the Settings Panel.



Pencil Drawing from Photo

Color Options:

- **Monochrome.** The drawing is made with a single color and its shades.

Choose colors for the pencil strokes and the paper using the color squares. Click on the square to activate the eyedropper tool, double click to open the selection color dialog. Use  to reset colors to default (black and white),  to reverse the background and pencil colors.

- **Bright Colors.** The drawing is created with bright, saturated colors. In this mode, you can change the background color.
- **Natural Colors.** The drawing is made using the original color range. The background is white and can't be changed.

Attention! Color changing is only available for the [Home Deluxe and Business](#) licenses. Owners of the [Home](#) license can make just black and white drawings.



Monochrome



Bright Colors

Natural Colors

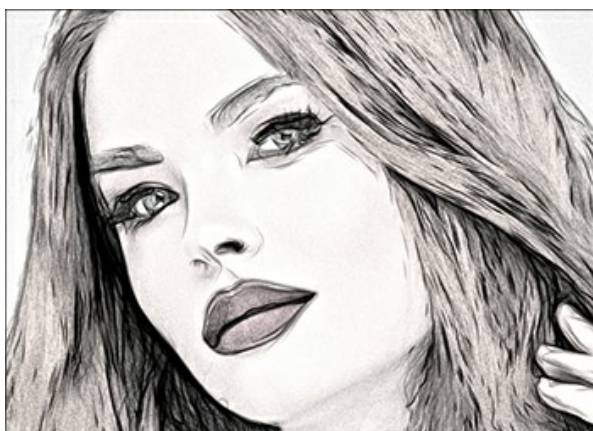
Effect Parameters:

In the **Blend Mode** drop-down list, you can define how the drawing will interact with the original image. The blend amount can be adjusted using the **Opacity** parameter.

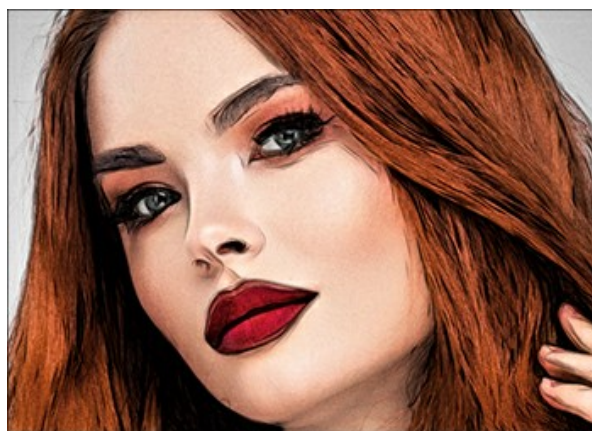
Attention! This feature is only available for the [Home Deluxe](#) and [Business](#) licenses.



Multiply Mode, **Opacity** = 54



Opacity = 10



Opacity = 85

Refined Lines. The check-box changes the appearance of the pencil strokes. When this option is enabled, the ends of the lines become thinner, the drawing looks more refined and elegant.



Regular Lines
(Check-box is disabled)



Refined Lines
(Check-box is enabled)

Extra Contrast. The check-box adds bright and clear lines to dark areas creating the ink effect.

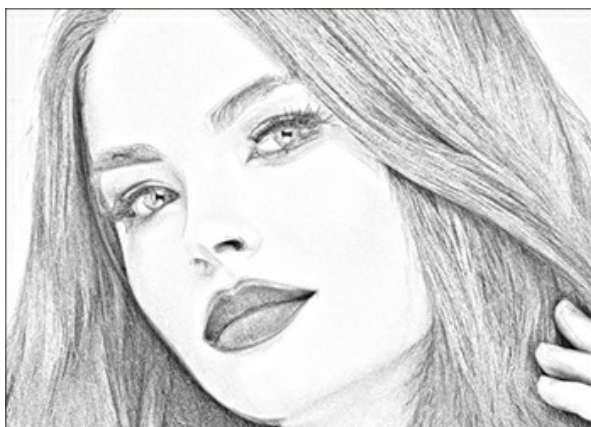


Without Extra Contrast
(Check-box is disabled)

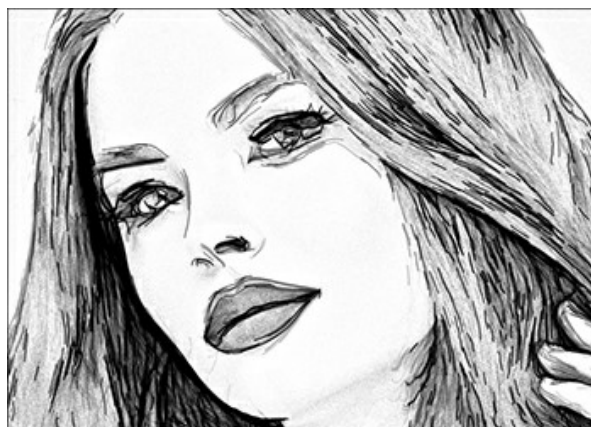


With Extra Contrast
(Check-box is enabled)

Brightness (10-100). The parameter changes the color intensity of the lines.



Brightness = 20



Brightness = 90

Level of Detail (10-100). The parameter defines the amount of details and lines.



Level of Detail = 30



Level of Detail = 80

Stroke Thickness (3-30). The parameter defines the width of the lines.



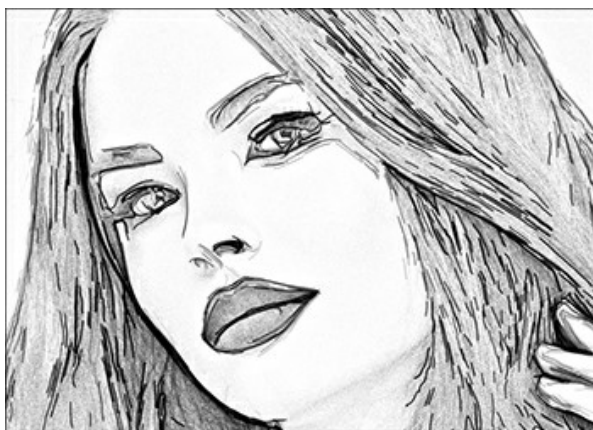
Stroke Thickness = 5



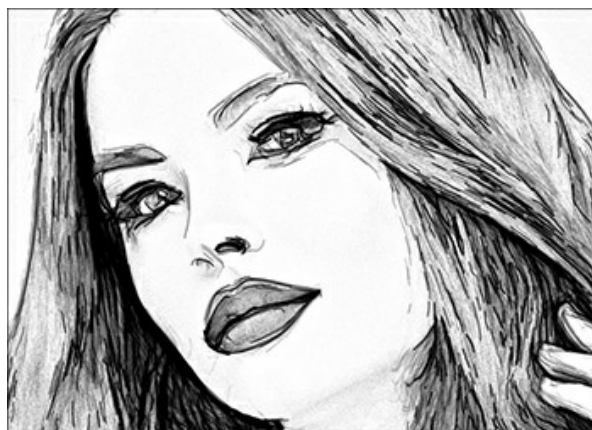
Stroke Thickness = 25

Hatching Density (0-200). The parameter changes the number of the hatching strokes. Increase its value to enhance

the sense of volume.

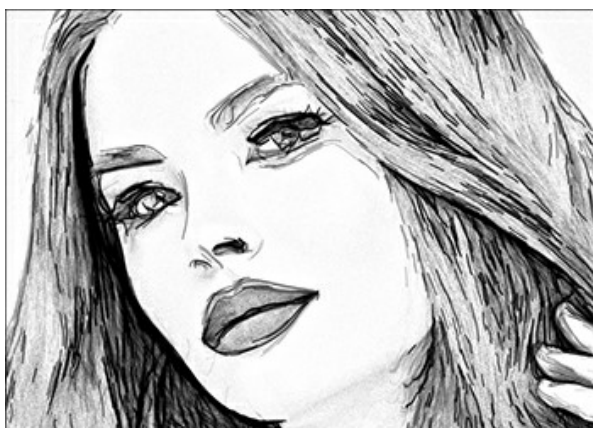


Hatching Density = 50



Hatching Density = 150

Sensitivity (0-80). The parameter affects the intensity of hatching.



Sensitivity = 30



Sensitivity = 70

Curvature (0-12). This parameter changes the form of the hatching strokes, from straight lines (value = 0) to curved ones.

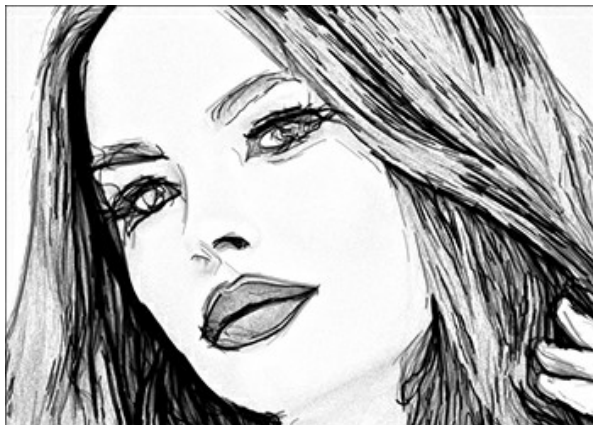


Curvature = 0

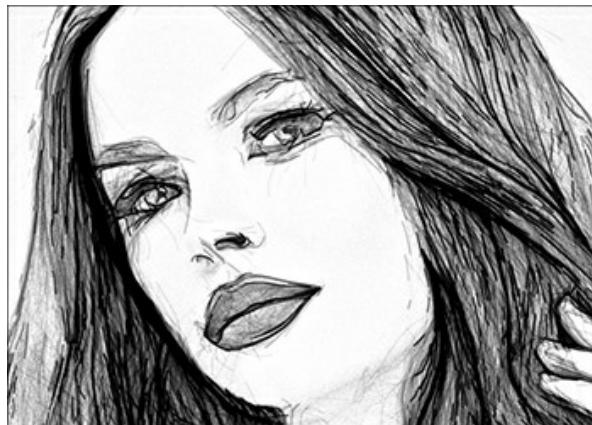


Curvature = 10

Dispersion (0-100). The parameter randomly changes hatching. Increase its value to make the strokes more weak and thin.

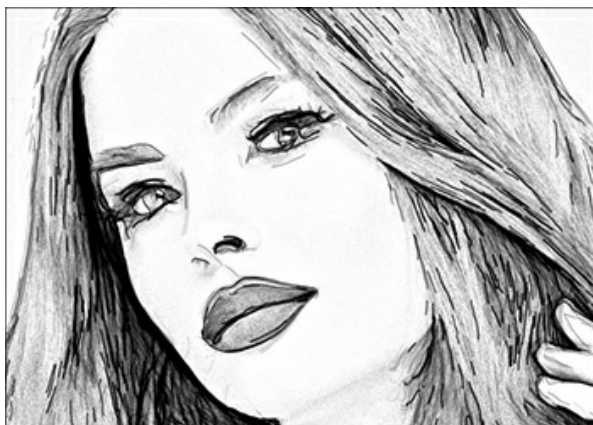


Dispersion = 20

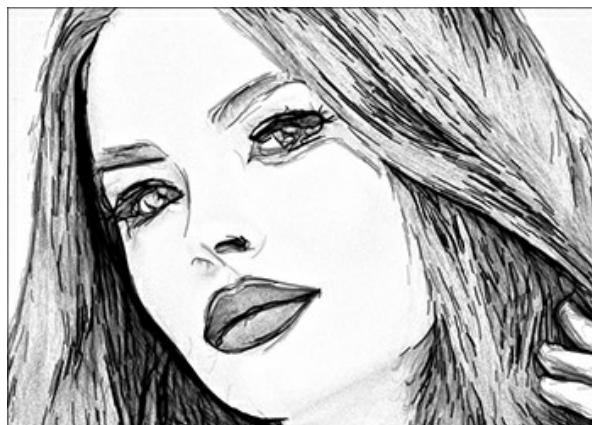


Dispersion = 85

Contour Detail (0-1000). The parameter defines the number of the small dark lines which complement the contours of the drawing.

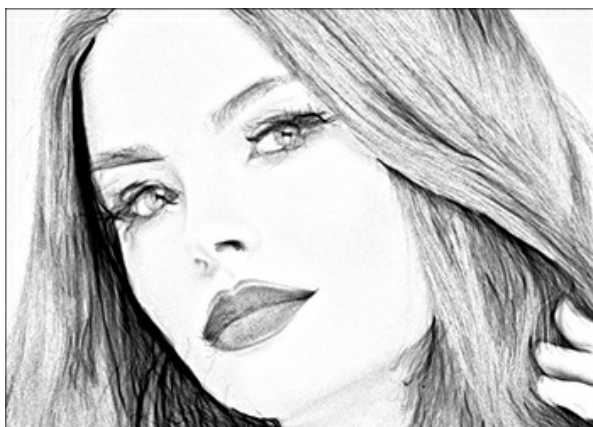


Contour Detail = 0

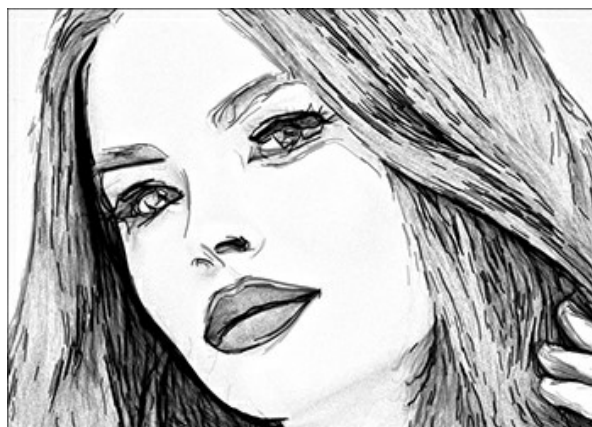


Contour Detail = 900

Contour Brightness (1-100). The parameter changes the intensity of the contours.



Contour Brightness = 10



Contour Brightness = 90

Additional Effects check-box:

Shadows (1-50). The parameter enhances shadows giving your drawing more volume and depth.



Shadows = 1



Shadows = 30

Noise (0-100). The parameter adds graininess to the image.



Noise = 0



Noise = 70

Contrast (0-100). The parameter increases the difference between highlights and shadows. Using this setting, you can get rid of unnecessary details and make the drawing look "cleaner".



Contrast = -15



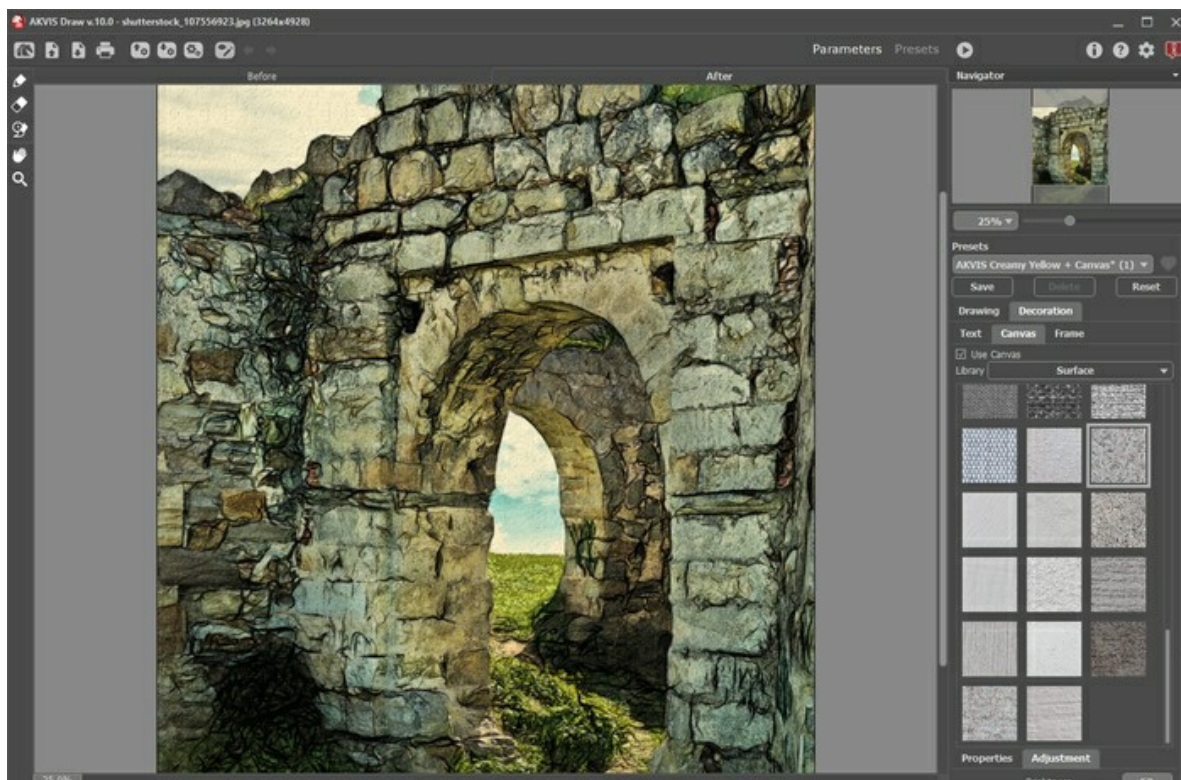
Contrast = 45

CANVAS SURFACE FOR YOUR PENCIL DRAWING

Using the **AKVIS Draw** program you can put your pencil drawing to any surface: sanded paper, MDF board, brick wall, etc.

In the **Decoration** group switch to the **Canvas** tab, enable the **Use Canvas** check-box, and choose and adjust a texture for your work of art.

Hint: You can drag the **Canvas/Frame/Text** tabs to change the order of the application of the decoration effects.



Textured Paper

You can choose a texture from **Library -> Surface** or load your own sample: **Library -> Custom...**

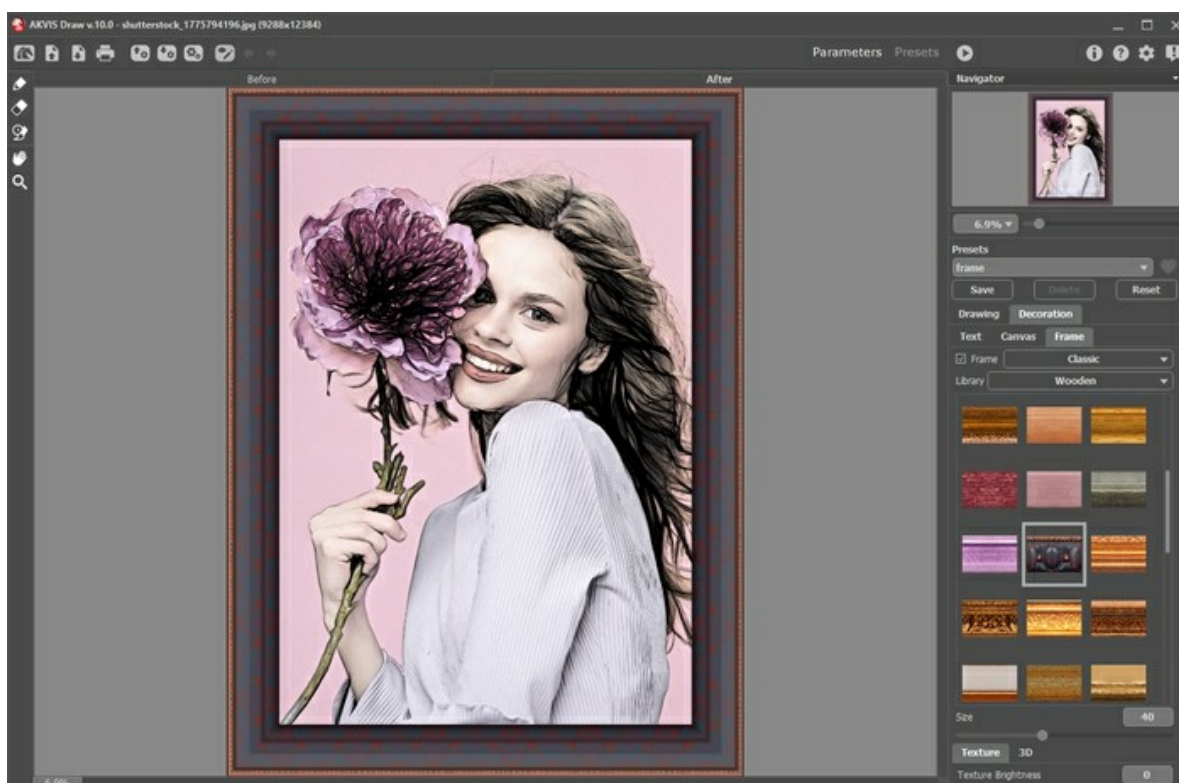
[Adjust the canvas settings.](#)

FRAMES FOR PENCIL DRAWINGS

In **AKVIS Draw** you can also add a frame to your pencil drawing to make your work stand out.

In the **Decoration** group switch to the **Frame** tab, enable the check-box of the same title, and choose the frame style and texture.

Hint: You can drag the **Canvas/Frame/Text** tabs to change the order of the application of the decoration effects.



Adding Frame

You can apply these frames to your drawings:

- [Classic Frame](#)
- [Pattern Frame](#)
- [Strokes](#)
- [Vignette](#)
- [Passe-Partout](#)

TEXT ON A DRAWING

You can personalize your drawing by adding a signature, create a postcard, insert a logo or a watermark to your image.

In the **Decoration** group switch to the **Text** tab and enable one of the modes: **Text** or **Image**.

Hint: You can drag the **Canvas/Frame/Text** tabs to change the order of the application of the decoration effects.



Adding Text

Adjust the text/watermark settings.

WORKING WITH PRESETS

AKVIS Draw includes a number of ready to use presets (settings combinations) for the draw effect which help you start working. When moving a cursor over a preset in the drop-down list, the quick result appears in the small window on the left side of the list.



A preset contains the settings of all tabs.



You can apply one of the AKVIS presets or modify the parameters to achieve the desired result.

To create your own preset, type a name for the preset into the field and press **Save**.

To return to the default settings of the selected preset, press **Reset**.

To delete your preset, choose it from the drop-down list and press **Delete**.

The AKVIS built-in presets cannot be removed.

Next to the preset name field there is a heart icon. Click on a heart icon   near the preset name field to add the preset to **Favorites** or to remove it from this group of presets.

Presets Gallery

Click the **Presets** button in the top panel to switch to the visual display mode of presets with the real-time approximate preview.



Presets Gallery

You will see a list of presets sorted alphabetically (AKVIS presets) or by creation date (user presets). When an image is loaded into the program, preset thumbnails are generated.

Click a thumbnail to select the preset. Double-click the thumbnail to process the entire image.

Double-click the name of the user preset to rename it. The AKVIS built-in presets cannot be renamed.

Use these buttons to change the display of presets:



- to show **AKVIS Presets**;



- to show **User Presets**;



- to show presets marked as **Favorites**.

Presets thumbnails can be arranged in two ways:



- as a vertical list;



- filling in the entire program area.

The preset control buttons are duplicated by the context menu commands:



Add to Favorites /  **Remove from Favorites**;



Rename Preset (only for user presets);



Move Up (only for user presets);



Move Down (only for user presets);



Delete Preset (only for user presets);



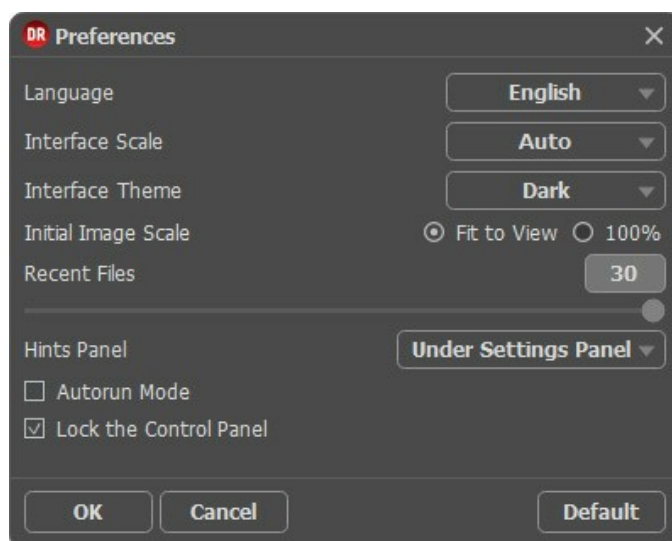
Show Parameters.



You can save your presets to a **.draw** file with . To load presets from the file use .

[Read more how to import and export user presets.](#)

PROGRAM PREFERENCES

The button  opens the **Preferences** dialog box that looks like this:



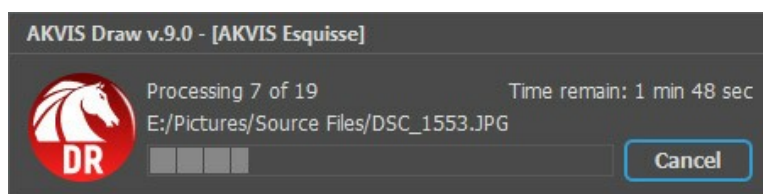
- **Language.** Change the program language by selecting another from the drop-down list.
- **Interface Scale.** Choose the size of the interface elements. When it is set to **Auto**, the program workspace will automatically scale to fit the screen resolution.
- **Interface Theme.** Select the style of the program interface: **Light** or **Dark**.
- **Initial Image Scale.** This parameter defines the way the image is scaled in the main window after loading:
 - **Fit to View.** The scale adjusts so that the image will be completely visible;
 - **100%.** The actual size is used, the image doesn't scale.
- **Recent Files** (available only in the standalone version). The number of recent documents. The list of the recent files, sorted by time, become visible by right mouse clicking on . Maximum: 30 files.
- **Hints Panel.** You can choose how the hints will be shown:
 - **Under Image Window;**
 - **Under Settings Panel;**
 - **Hide.**
- **Autorun Mode** check box. If this box is enabled, any changes will be updated automatically. If the mode is disabled, you will have to press the  button in order to see changes applied.
- **Lock the Control Panel** check-box. It disables the possibility to hide/show the top panel. If the check-box is selected the panel is always visible.

To save changes made in the **Preferences** window press **OK**.

Click on **Default** to return to the default settings.

BATCH PROCESSING

AKVIS Draw supports the **Batch Processing** feature that lets you automatically convert a series of images with the same settings and saves you time and efforts. It is useful when creating a number of illustrations at the same style for a booklet or when processing all frames of video.




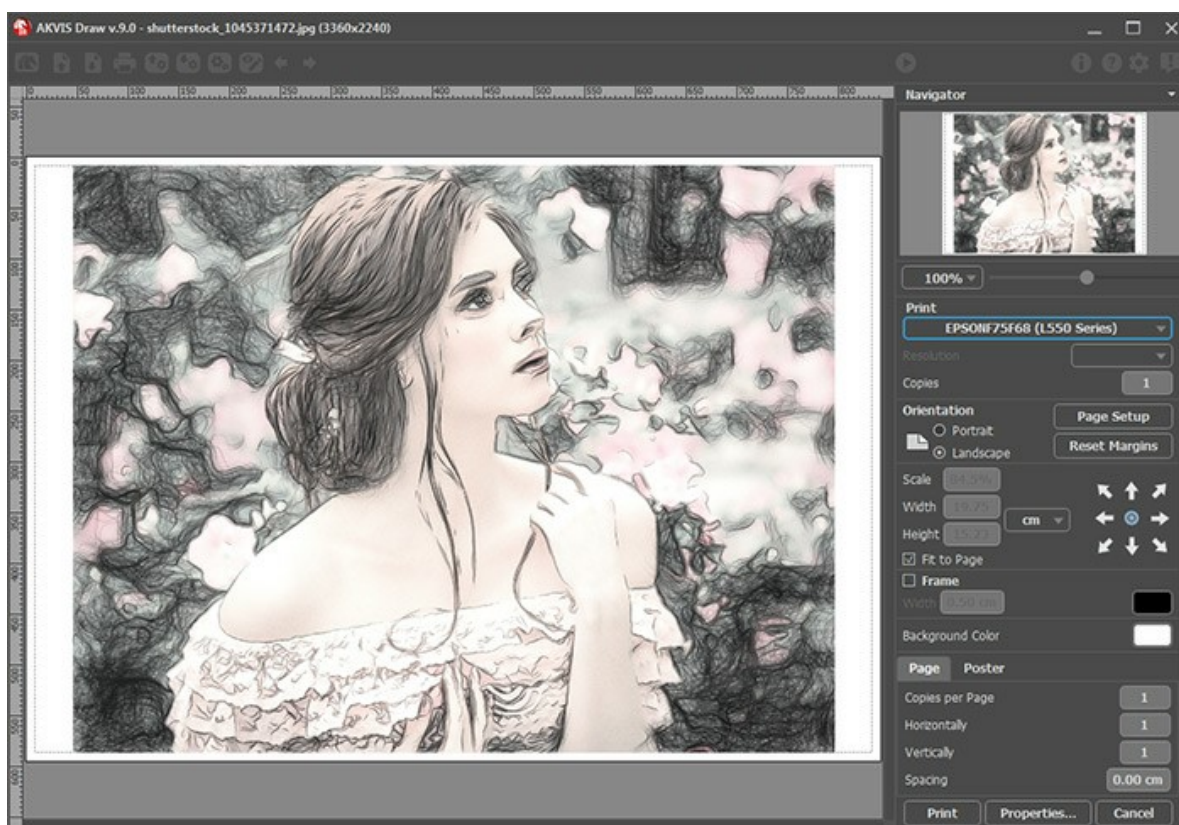
Even if you've never used this feature before it is simple to learn!

If you use the standalone version of **AKVIS Draw**, [read the instructions here](#).

If you use the **Draw** plugin in Photoshop, [use this tutorial](#).

PRINT IMAGES IN AKVIS DRAW

In the standalone version of **AKVIS Draw** you can print the image. Press the button  to open the **Print** options.



Print Options in AKVIS Draw

Adjust the parameters appearing in the Settings Panel:

Choose a printer from the list of available devices, set the desired resolution, as well as the number of copies to print.

In the **Orientation** group, set the position of paper: **Portrait** (vertically) or **Landscape** (horizontally).

Click the **Page Setup** button to open a dialog box to choose the size of the paper and its orientation, as well as the print margins.

Press the **Reset Margins** button to return the page margins to the default size.

Change the size of the printed image adjusting the parameters **Scale**, **Width**, **Height** and **Fit to Page**. These parameters have no effect on the image itself, just on the print version. You can change the size of the printed image by entering any value in %, or by entering new values in **Width** and **Height**.

To adjust the size of the image to the paper size, select **Fit to Page**.

Move the image on the page with the mouse or align it using the arrow buttons.

You can activate **Frame** for the image and adjust its width and color.

Choose the **Background Color** by clicking on the color plate.

In the **Page** tab, you can adjust printing of the multiple copies of the image on a single sheet.



Print Page

- ◊ **Copies per Page.** It lets you specify the number of copies of the image on one page.
- ◊ **Horizontally** and **Vertically.** These parameters indicate the number of rows and columns for the copies of the image on the page.
- ◊ **Spacing.** The parameter sets the margins between the copies of the image.

In the **Poster** tab, it's possible to customize printing of the image on multiple pages for the subsequent junction into a large picture.



- ◊ **Pages.** If the check-box is enabled, you can specify the maximum number of the pages in which the image will be divided. The image scale will be adjusted to fit this number of the sheets. If the check-box is disabled, the program will automatically select the optimal number of the pages in accordance with the actual size of the image (scale = 100%).
- ◊ **Glue Margins.** If the check-box is enabled, you can adjust the width of the padding for bonding sheets. Margins will be added to the right and to the bottom of each part.
- ◊ **Show Numbers.** With the enabled check-box, a sequence number of each part, by a column and a row, will be printed in the margins.
- ◊ **Lines of Cut.** Activate the check-box to display the cut marks in the margins.

To print the image with the chosen parameters, press the **Print** button.
To cancel and close the printing options click on **Cancel**.

Click the **Properties...** button to open a system dialog box that enables you to access the advanced settings and send the document to print.

PENCIL DRAWINGS GALLERY

Have a look at the gallery of works made in **AKVIS Draw**. The software turns photos into pencil drawings using a smart conversion algorithm. These pictures help to illustrate the possibilities of the program. Do you want to see your works of art published? [Send us your results!](#)

Portrait of a Girl by Sergey Maximenko.



Original Image



Color Drawing

Midsummer by Sergey Maximenko.



Original Image

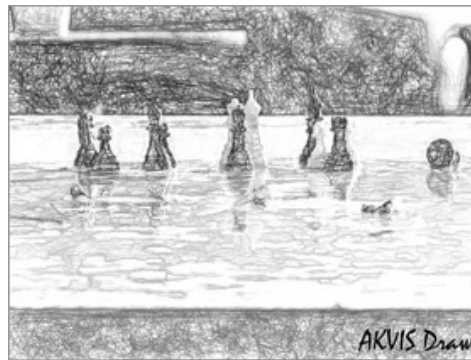


Color Drawing

Chess by Sergey Maximenko.



Original Image



Black and White Drawing

Cheery Old Man by Liu Hui-zeng.

Original Image



Color Sketch

Dinosaur by Liu Hui-zeng.

Original Image



Color Drawing

Fragrant Berries by Liu Hui-zeng.



Original Image



Color Drawing

DRAW GALLERY II

Have a look at the gallery of images converted to quick pencil sketches with **AKVIS Draw**. If you would like to submit your images to be published, just [let us know!](#)



Fitness Girls
([open a larger version](#))



Musician
([open a larger version](#))



Ethnic Beauty
([open a larger version](#))



Body Art
([open a larger version](#))



Mom & Daughter
([open a larger version](#))



Basketball Player
([open a larger version](#))



Sweet Tooth for Donuts
([open a larger version](#))



Horse
([open a larger version](#))



Friends
([open a larger version](#))



Pretty Woman
([open a larger version](#))



Portrait
([open a larger version](#))

DRAWINGS IN THE MARGINS

AKVIS Draw opens up huge opportunities for creativity. Even if you don't have any drawing skills, with this software you can create a sketch that has a real hand drawn look. Artists and poets often draw such light airy sketches in the margins of their albums and diaries. Now you can easily fill your website or blog with beautiful pictures that will complement your stories or poems.

We will show you how to create artistic works to illustrate a fragment from the poem "Stanzas to Augusta" by Lord Byron.

*In the desert a fountain is springing,
In the wide waste thee still is a tree,
And a bird in the solitude singing,
Which speaks to my spirit of thee.*


Note that you need an image editor to combine the pictures into a collage. Or you can place the drawings directly to a web page.

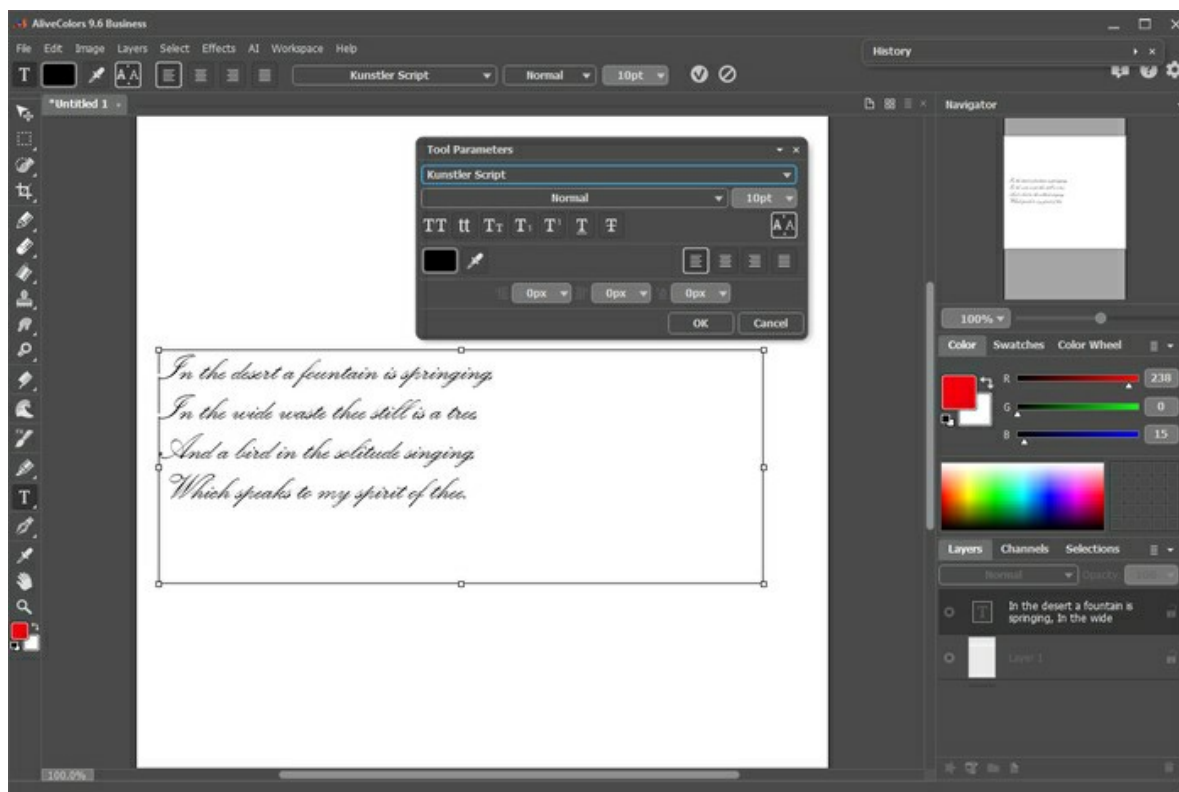


Original Photos

Result

Step 1. Create a new image in the photo editor, for example, a white image of 800x1200 pixels.

Step 2. With the **Text**  tool inscribe the lines of the poem.



Adding Text

Step 3. Open an image with a tree.



Photo of a Tree

Step 4. Call the **AKVIS Draw** plugin from the menu: **Effects -> AKVIS -> Draw**. The program makes a hand drawn pencil sketch from your photo.

Adjust the [effect parameters](#). You can remove odd strokes with the **Eraser** .

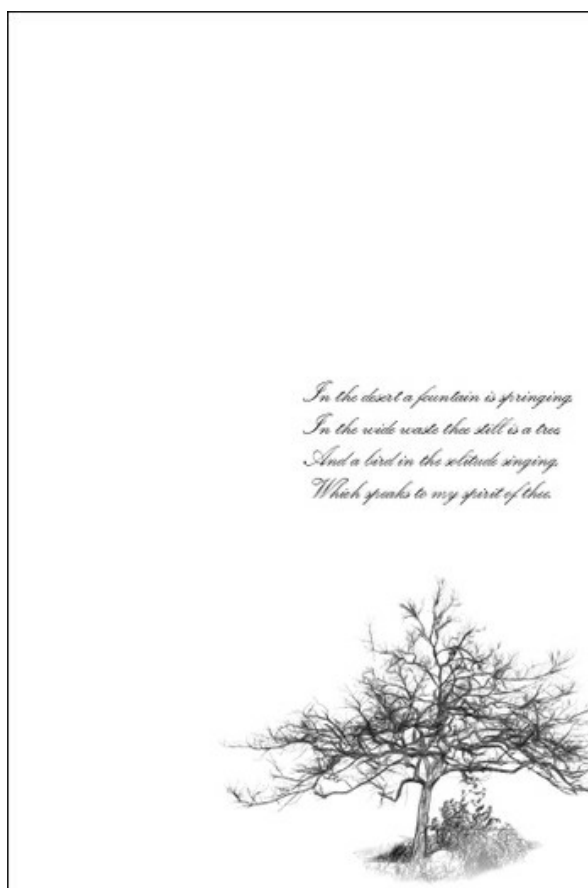


Pencil Drawing in AKVIS Draw

Apply the result  and return to the image editor.

Step 5. Now, we need to remove the background. The easiest way is to use the **Magic Wand** - click on the white area, then press the **Delete**-key.

Copy the tree to the page with the poem.



Drawing of a Tree

Step 6. In the same way, add a bird to the picture:

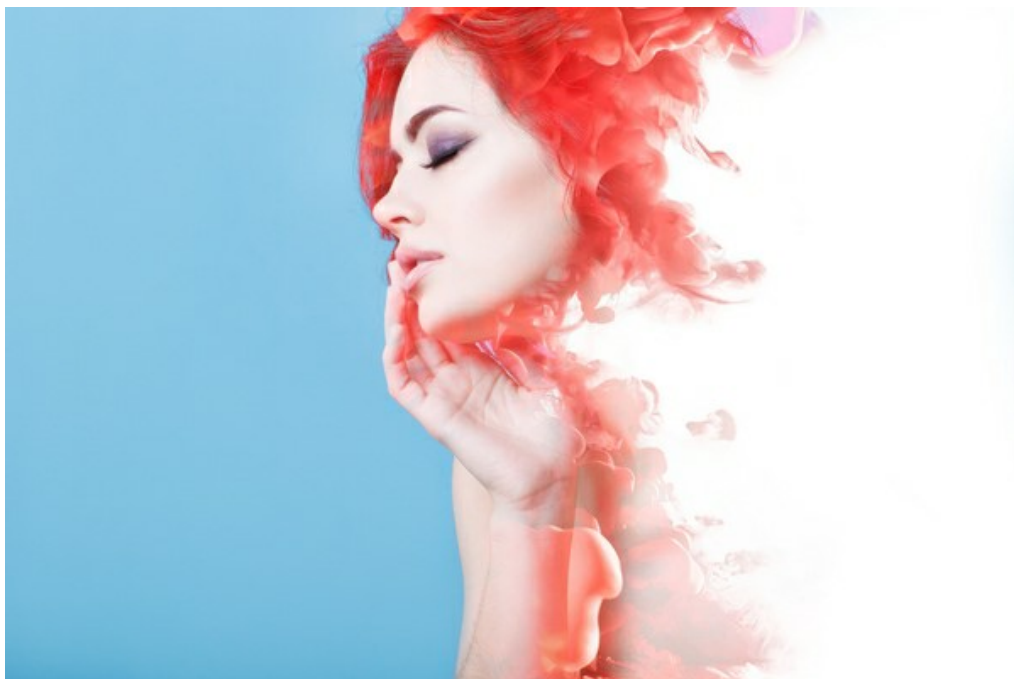


Original Photo

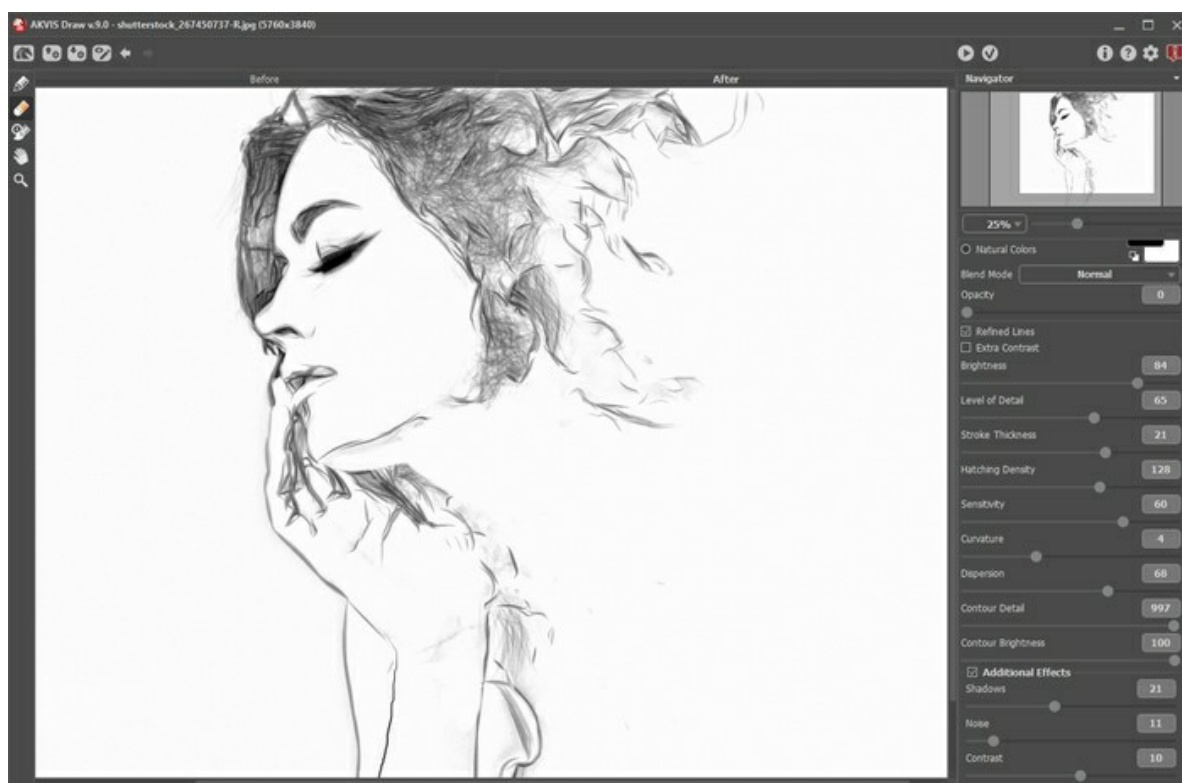


Drawing of a Bird

and a female silhouette:



Original Photo



Sketch Portrait of a Lady

Note: You can adjust a transparency for each image; all of them are located on different layers.

Step 7. Save the result.



Poem with Sketches

AKVIS PROGRAMS

[AKVIS AirBrush — Airbrushing Techniques on Your Photos](#)

AKVIS AirBrush automatically transforms a photograph into a work of art which looks like made with a special airbrush tool that sprays paints or inks. The software works as an artistic filter creating stylish colorful airbrush designs from images using chosen settings of photo-to-painting conversion. [More...](#)



[AKVIS Artifact Remover AI — JPEG-Compressed Image Restoration](#)

AKVIS Artifact Remover AI uses artificial intelligence algorithms to remove JPEG compression artifacts and restore the quality of compressed images. This program provides 4 image enhancement modes, each involves a unique neural network developed especially for this occasion. The software is available free of charge for home users. For commercial use, a Business license is offered. [More...](#)



[AKVIS ArtSuite — Frames and Effects for Your Photos](#)

AKVIS ArtSuite is an impressive collection of versatile frames and effects for photos. ArtSuite contains many templates and texture samples that can be used to create a virtually limitless variety of options for generating frames. Decorate a photo to give it an original and festive look! [More...](#)



AKVIS ArtWork — Collection of Painting & Drawing Techniques

AKVIS ArtWork is photo to painting software designed to imitate different artistic techniques: *Oil Painting*, *Watercolor*, *Gouache*, *Comics*, *Pen & Ink*, *Linocut*, *Stencil*, *Pastel*, and *Pointillism*. ArtWork helps you to create a piece of art out of any picture! [More...](#)



AKVIS Chameleon — Photo Collage Creation

AKVIS Chameleon is a fun to use tool for photo collage creation. It makes the process easy and entertaining. The tool is very easy to handle as it does not require precise selection of objects. Using the software you can quickly create your own photo collages. [More...](#)



AKVIS Charcoal — Turn Photos into Charcoal & Chalk Drawings

AKVIS Charcoal is a creative tool for conversion of photos into charcoal and chalk drawings. Using the program you can make professional-looking expressive black and white images. Playing with colors and options you can achieve outstanding artistic effects such as sanguine, sepia, and others. [More...](#)



AKVIS Coloriage AI — Add Color to Black and White Photos

AKVIS Coloriage AI allows colorizing B&W photos. The program includes an AI-powered image colorization mode based on machine learning, as well as the classic method of manual coloring using zone selection. Breathe new life into your old family photographs! [More...](#)



AKVIS Decorator — Resurface and Recolor

AKVIS Decorator lets you change the surface of an object in a realistic manner. The program puts on a texture keeping the volume of an object, following its folds and creases. The new pattern looks absolutely natural and makes you see things differently. Recoloring is also made easy. [More...](#)



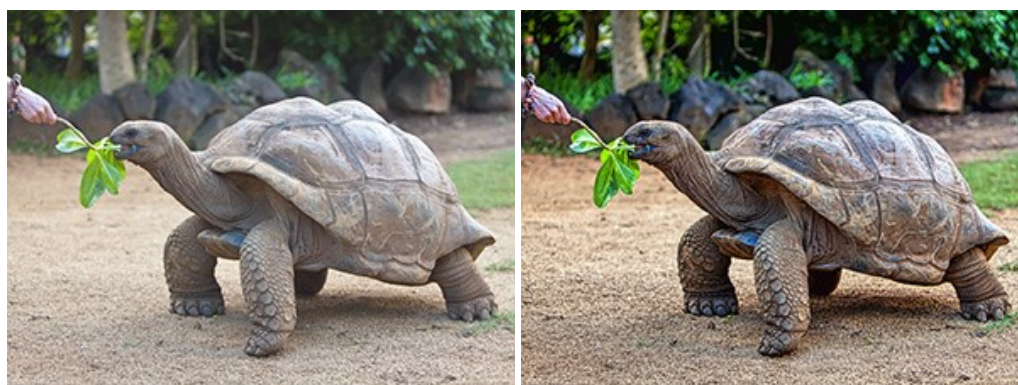
AKVIS Draw — Hand-made Pencil Drawing Effect

AKVIS Draw converts your photos into hand made pencil drawings. The software creates realistic looking line art illustrations, produces both B&W and color drawings. Add a hand-drawn look to your pictures! [More...](#)



AKVIS Enhancer — Bring Detail To Your Pictures

AKVIS Enhancer is image enhancement software that detects detail in underexposed, overexposed and mid tone areas of a photo with uneven exposure. Enhancer improves every part of the image! The software works in three modes: *Improve Detail*, *Prepress*, and *Tone Correction*. The program offers a fast method to fix a dark photo, add contrast and brightness to a picture, it lets you improve color and adjust tones. [More...](#)



AKVIS Explosion — Fabulous Particle Explosion Effects

AKVIS Explosion offers creative destruction and particle explosion effects for your photos. It bursts an object and applies dust and sand particles to an image. With the software, you can create eye-catching graphics in just a few minutes! [More...](#)



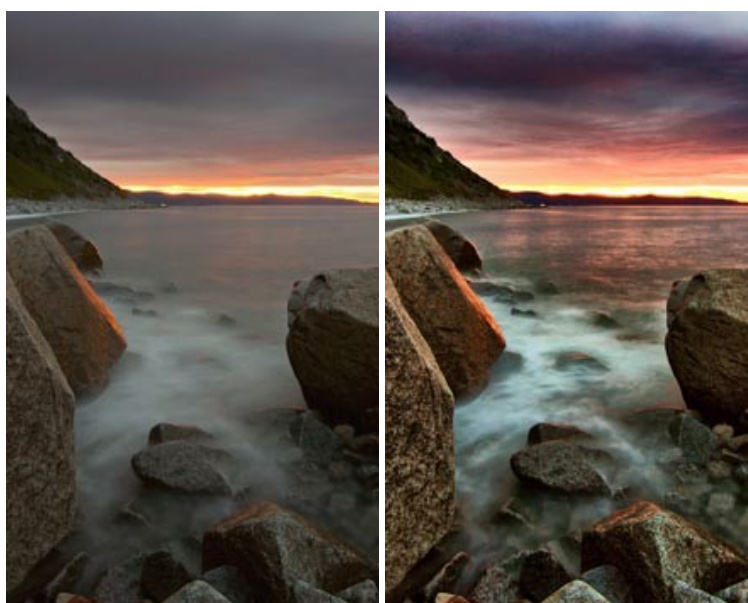
AKVIS Frames — Decorate Your Photos with Frames

AKVIS Frames is a free program designed for working with the [AKVIS frame packs](#)



AKVIS HDRFactory — High Dynamic Range Images: Brighter than Reality!

AKVIS HDRFactory lets you create a High Dynamic Range image from a series of shots or from one single photo. The program can also be used for photo correction. The program brings life and color to your photos! [More...](#)



AKVIS Inspire AI — Artistic Stylization of Images

AKVIS Inspire AI stylizes images using various samples of painting. The AI-based program applies the color scheme and style of a selected artwork to a photo creating a new masterpiece. The software includes a gallery of art styles and allows to load a custom sample. Imitate the style of world famous artists! [More...](#)



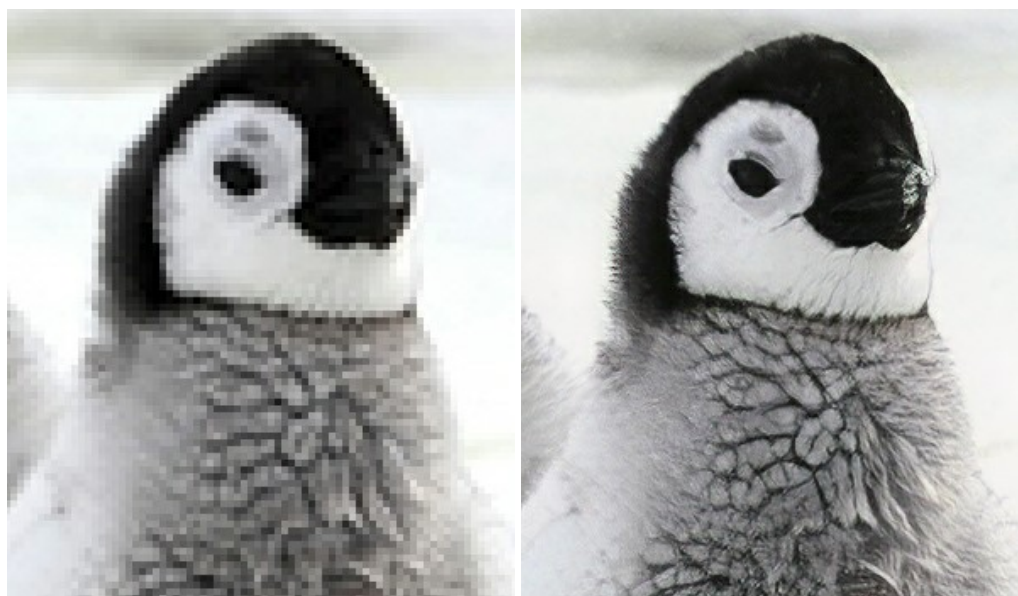
AKVIS LightShop — Light and Star Effects

AKVIS LightShop lets you create an infinite number of astounding light effects! The program offers advanced lighting techniques for adding stars and glow effects to images. A light effect draws attention and brighten up any photo. Add a little magic to your pictures! [More...](#)



AKVIS Magnifier AI — Enlarge Images & Enhance Quality

AKVIS Magnifier AI allows you to increase the size of photos and improve image quality and appearance. Featuring neural network-based algorithms, Magnifier AI upscales images to super-high resolution, up to 800%, and produces wall-sized prints. Improve image resolution, create clear, detailed images with perfect quality! [More...](#)



AKVIS MakeUp — Retouch Your Portrait Photos!

AKVIS MakeUp improves your portraits giving them a professional look. The software retouches facial imperfections making your skin radiant, beautiful, pure and even. The program adds glamour to your pictures and creates a high key effect. Look your best in every photo with AKVIS MakeUp! [More...](#)



[AKVIS NatureArt — Bring Nature to Your Photos](#)

AKVIS NatureArt is an excellent tool for imitating the magnificence of natural phenomena on your photos. The program includes a number of effects: [Rain](#)



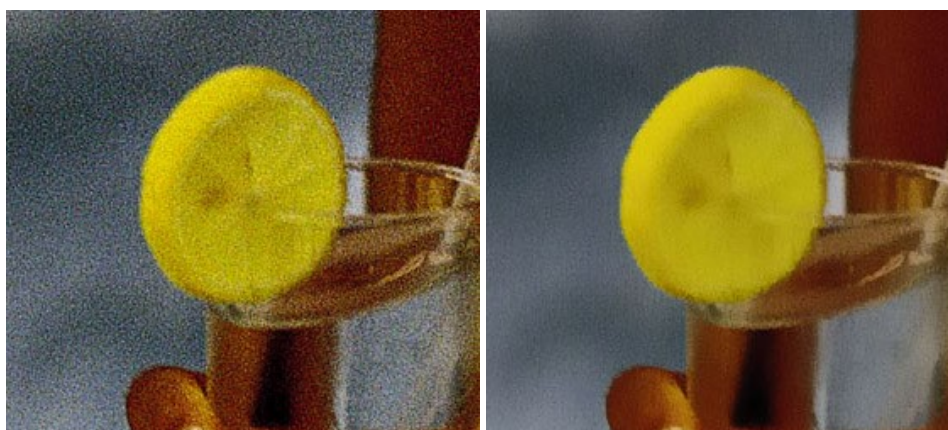
[AKVIS Neon — Glowing Drawings from Photos](#)

AKVIS Neon lets you create amazing glowing lines effects. The software transforms a photo into a neon image that looks like drawn with luminescent ink. [More...](#)



AKVIS Noise Buster AI — Digital Noise Reduction

AKVIS Noise Buster AI is software for noise suppression on digital and scanned images. The program is efficient for removing any type of digital noise. It reduces both luminance and color noise without spoiling other aspects of photos. The software includes AI technologies and adjustments for manual refining. [More...](#)



AKVIS OilPaint — Oil Painting Effect for Your Photos

AKVIS OilPaint turns your photos into oil paintings. The mysterious production of a painting happens right before your eyes. The unique algorithm authentically reproduces the technique of the real brush. With this cutting-edge software you can become a painter! [More...](#)



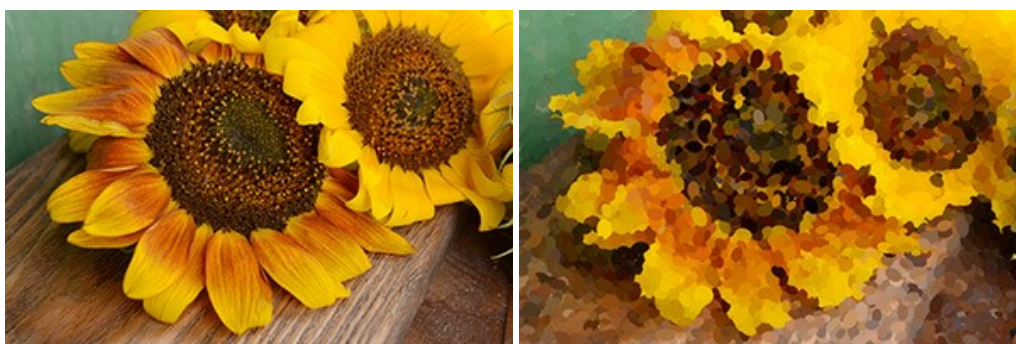
AKVIS Pastel — Turn Photos into Pastel Paintings

AKVIS Pastel turns your photos into pastel paintings. The program converts your photo into a lifelike digital art imitating one of the most popular artistic techniques. AKVIS Pastel is a powerful tool to unleash your creativity! [More...](#)



[**AKVIS Points — Apply Pointillism Effect to Your Photos**](#)

AKVIS Points lets you transform your photos into paintings using one of the most exciting artistic techniques - pointillism. With the software you can easily create gorgeous works of art in a pointillist manner. Discover the world of bright colors! [More...](#)



[**AKVIS Refocus AI — Focus Improvement & Blur Effects**](#)

AKVIS Refocus AI improves the sharpness of out-of-focus and blurry photos, enhances the entire image or partially, creating a selectively focused area. It's also possible to add bokeh and lens blur effects to your photos. The program provides five image processing modes: *Refocus AI*, *Tilt-Shift*, *Iris Blur*, *Motion Blur*, and *Radial Blur*. [More...](#)



[**AKVIS Retoucher — Image Restoration Software**](#)

AKVIS Retoucher is an efficient program for photo restoration and photo retouching. The software removes dust, scratches, stains, and other defects that appear on damaged photos. It intelligently reconstructs the missing parts of the photo using the information of the surrounding areas. [More...](#)



[AKVIS Sketch — Turn Your Photos into Pencil Sketches](#)

AKVIS Sketch converts photos into amazing pencil drawings. The software creates realistic color artworks and B&W sketches, imitating the technique of graphite and color pencil. The program offers these photo to drawing conversion styles: *Classic*, *Artistic*, *Maestro*, and *Multistyle*, - each with a series of presets. AKVIS Sketch allows you to feel like a real artist! [More...](#)



[AKVIS SmartMask AI — Selection Made Easy](#)

AKVIS SmartMask AI is an efficient selection tool that saves time and is fun to use. Equipped with artificial intelligence tools, the program is the most convenient and fastest way to mask objects in an image. The software considerably increases your productivity. You will be freed from boring work and will have more room for creativity and realization of your ideas. [More...](#)



[AKVIS Watercolor — Aquarelle Art from Photos](#)

AKVIS Watercolor easily makes a photo look like a brilliant and vibrant watercolor painting. The program includes two styles of photo to painting conversion: *Classic Watercolor* and *Contour Watercolor*; each comes with a wide range of ready-to-use presets. The software turns ordinary images into aquarelle pieces of art. [More...](#)

